

Grand Drive, SW20

£260,000

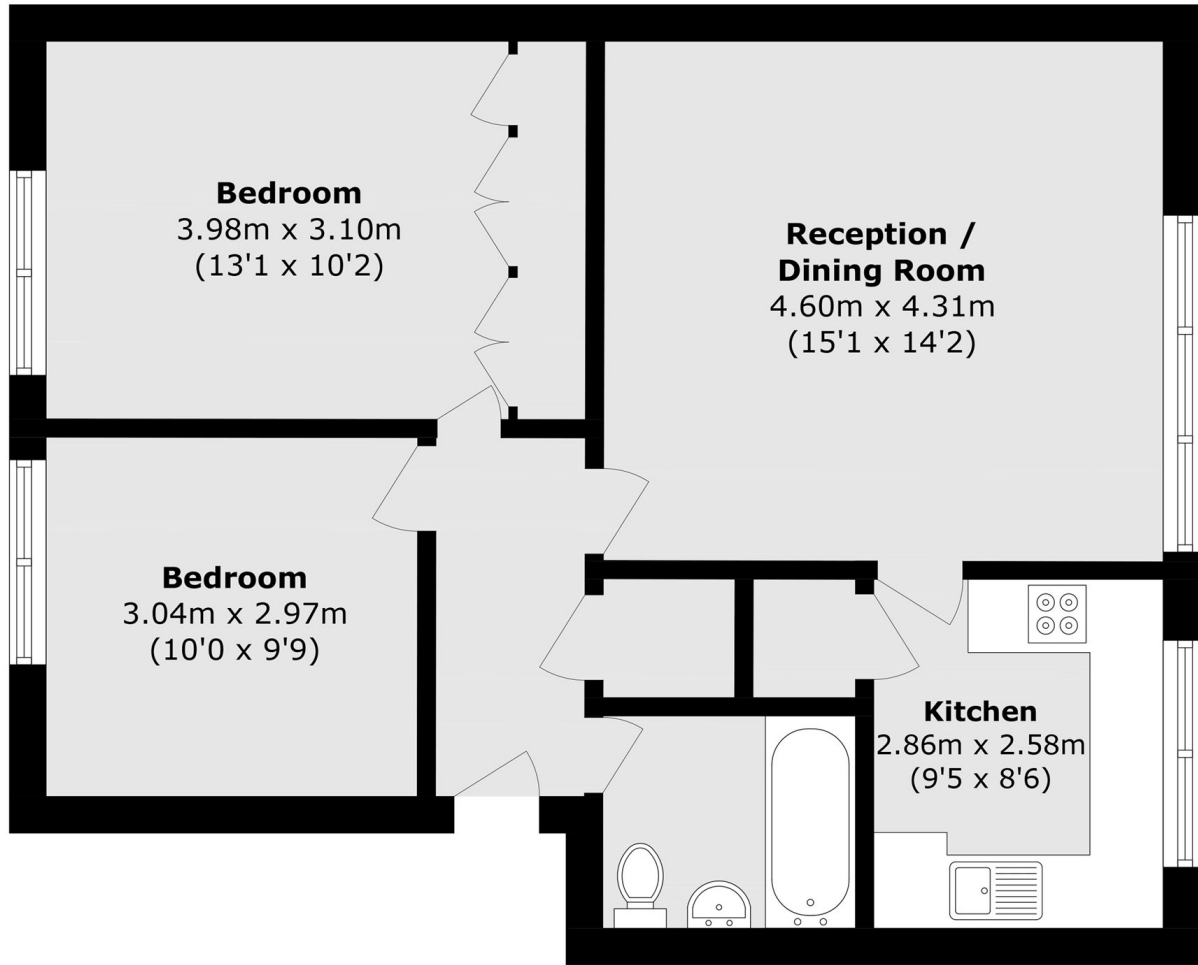
This top floor two bedroom property has windows on both side, allowing loads of light and has a large living room, separate modern kitchen and bathroom with shower over bath.

Grand Drive allows easy access to the open spaces of Cannon Hill Common and easy bus links to Raynes Park, Wimbledon and Morden, there is also a Co-Op and Post Office on your doorstep.

Features

- Two Bedrooms
- Top Floor
- Large Living Room
- Modern Kitchen
- Long Lease
- Good Schools

Grand Drive,
London, SW20



Total area (approx.): 61.5 sq. m (661.9 sq. ft)