



Hereford Mansions, W2

£1,600,000



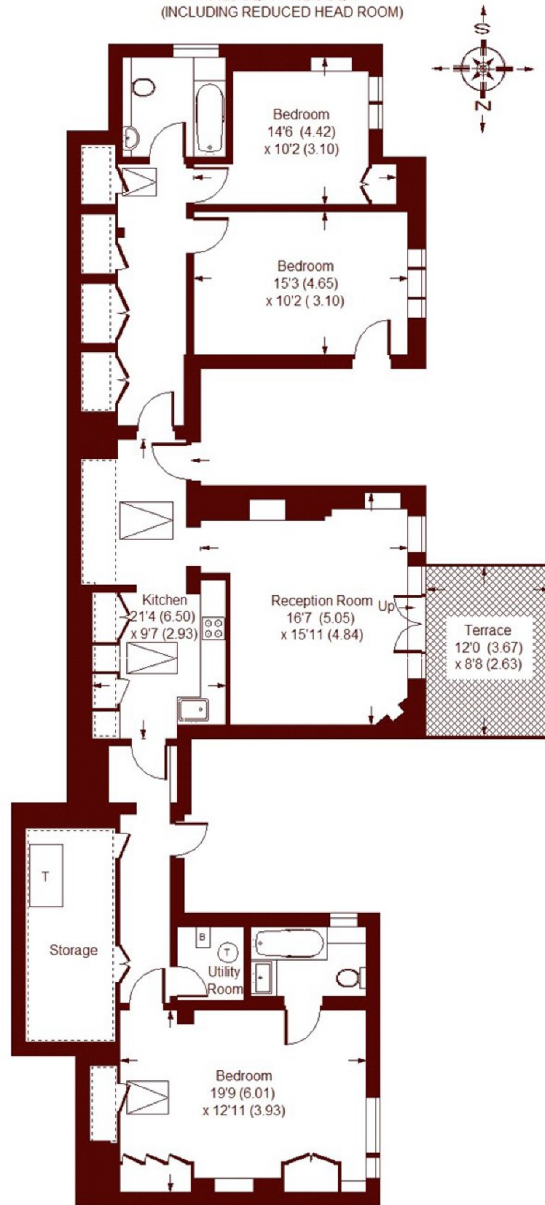
- Stunning Building
- Penthouse Apartment

- Three Double Bedrooms
- Concierge

- Generous Storage Space
- Access to Westerly Terrace

Hereford Mansions, W2

APPROX. GROSS INTERNAL FLOOR AREA
1426 SQFT / 132.5 SQM
(INCLUDING REDUCED HEAD ROOM)



FIFTH FLOOR

= REDUCED HEADROOM BELOW 1.5 M / 5'0

Whilst every attempt has been made to ensure the accuracy of the floor plan, measurements are approximate and not to scale.
No guarantee is given on the total square footage of the property quoted on the plan. Figures given are for guidance.
Plan is for illustration purposes only, not to be used for valuations.

Marsh & Parsons Notting Hill

2-6 Kensington Park Road,
London, W11 3BU
020 7313 2890