



Kendoa Road, SW4

£650,000

Dexters



Kendoa Road, SW4

A beautifully presented two-bedroom ground floor garden flat, enviably located on the sought-after Kendoa Road in the heart of Clapham. The property offers well proportioned accommodation throughout, comprising a spacious open-plan living, kitchen and dining area with direct access to a conservatory, which in turn opens onto the private rear garden. There are two generous double bedrooms and a contemporary family bathroom. To the rear, the property benefits from a private garden with valuable side access, providing a peaceful outdoor retreat. Further benefits include a share of freehold and the property is offered to the market chain free.

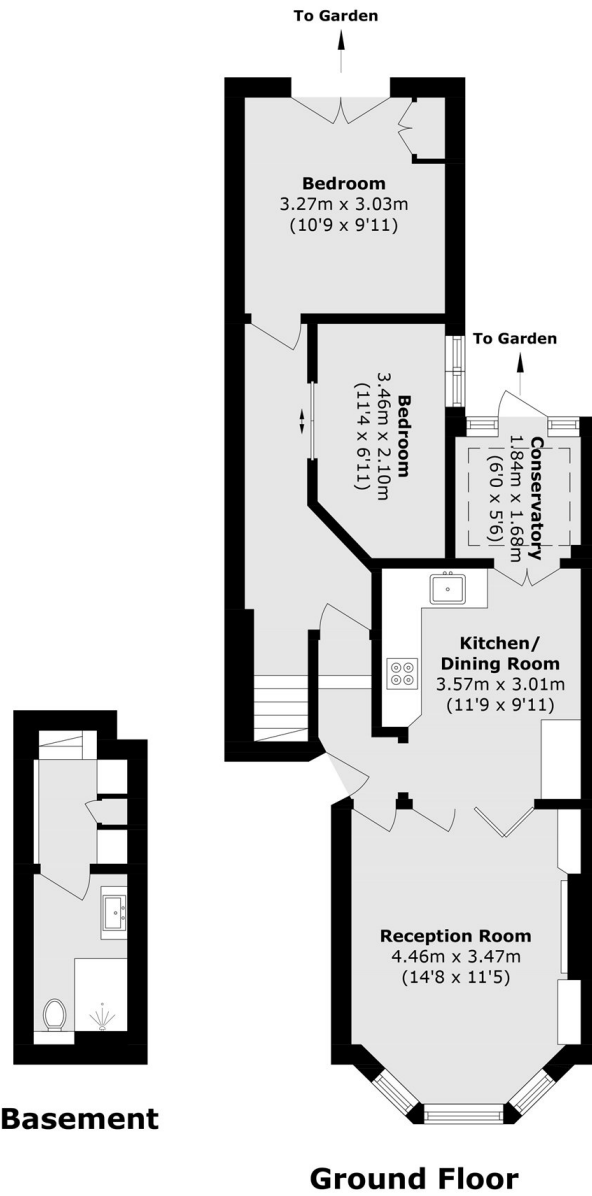
Ideally positioned on Kendoa Road, the property is just moments from the vibrant amenities of Clapham High Street and the charming boutiques, cafés, bars, and restaurants of Clapham Old Town. The expansive green spaces of Clapham Common are within easy walking distance, while two nearby Northern Line stations provide swift and convenient access to Central London and beyond.

Features

- Chain Free
- Share of Freehold
- Side Access
- Two Double Bedrooms
- Private Garden



Kendoa Road, London, SW4



Total area (approx.): 63.5 sq. m (683.5 sq. ft)