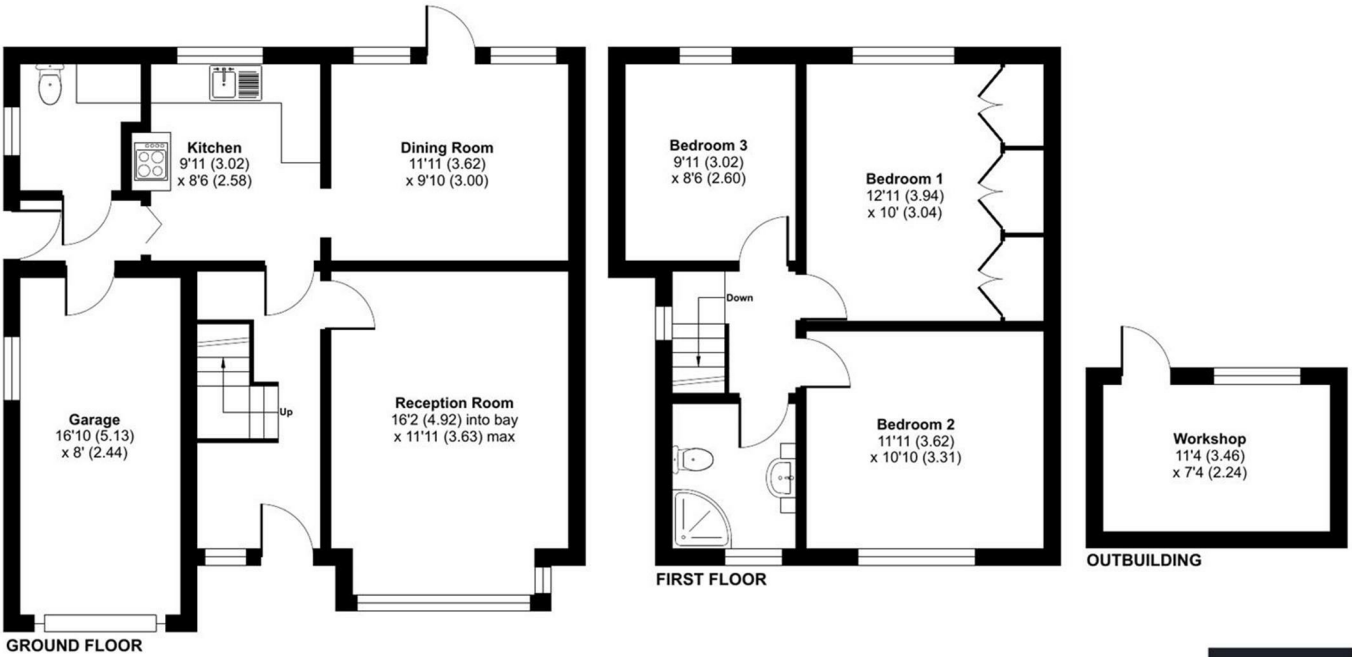


FOR SALE

9 Greenway Avenue, Alveley, Bridgnorth, WV15 6PB



Approximate Area = 1027 sq ft / 95.4 sq m  
Garage = 135 sq ft / 12.5 sq m  
Outbuilding = 83 sq ft / 7.7 sq m  
Total = 1245 sq ft / 115.6 sq m  
For identification only - Not to scale



Floor plan produced in accordance with RICS Property Measurement 2nd Edition, Incorporating International Property Measurement Standards (IPMS2 Residential). © nñchecom 2025. Produced for Halls. REF: 1268780



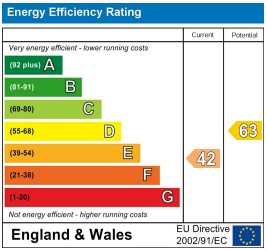
FOR SALE

Offers in the region of £342,950

9 Greenway Avenue, Alveley, Bridgnorth, WV15 6PB

**Property to sell?** We would be delighted to provide you with a free no obligation market assessment of your existing property. Please contact your local Halls office to make an appointment. **Mortgage/financial advice.** We are able to recommend a completely independent financial advisor, who is authorised and regulated by the FCA. Details can be provided upon request. **Do you require a surveyor?** We are able to recommend a completely independent chartered surveyor. Details can be provided upon request.

Energy Performance Rating



Nestled in the charming village of Alveley, Bridgnorth, this delightful detached house on Greenway Avenue offers comfort and practicality. With three well-proportioned bedrooms, this property is ideal for families or those seeking extra space.




01952 971800

**Telford Sales**  
32 Market Street, Wellington, Telford, TF1 1DT  
E: telford@halls.gb.com




IMPORTANT NOTICE. Halls Holdings Ltd and any joint agents for themselves, and for the Vendor of the property whose Agents they are, give notice that: (i) These particulars are produced in good faith, are set out as a general guide only and do not constitute any part of a contract (ii) No person in the employment of or any agent of or consultant to Halls Holdings has any authority to make or give any representation or warranty whatsoever in relation to this property (iii) Measurements, areas and distances are approximate, Floor plans and photographs are for guidance purposes only (photographs are taken with a wide angled / zoom lenses) and dimensions shapes and precise locations may differ (iv) It must not be assumed that the property has all the required planning or building regulation consents. Halls Holdings, Bowmen Way, Shrewsbury, Shropshire SY4 3DR. Registered in England 06597073.






2 Reception Room/s



3 Bedroom/s



1 Bath/Shower Room/s



- Close to Local Amenities.
- Large Driveway.
- Outbuilding Workshop.
- Well-Presented Throughout.
- Single Integral Garage.
- Total ft² - 1023.00

DESCRIPTION

This inviting 3-bedroom detached house on Greenway Avenue offers a wonderful combination of space and functionality. On the ground floor, the property features a light-filled reception room and a separate dining room, providing ample space for family gatherings or entertaining guests. The kitchen is well-equipped, and there is a convenient WC/Utility room. There is also direct access to the garage. Upstairs, you'll find three well-proportioned bedrooms, along with a shower room. Outside, the house is set within a well-maintained garden. Additionally, the property is equipped with double glazing throughout and the outbuilding currently serves as a workshop, but could be repurposed for a variety of uses such as a home office, studio, or additional storage. This property provides an excellent opportunity to enjoy peaceful village life with the benefits of a spacious home and versatile outdoor space.

LOCATION

Alveley is a picturesque village located in Shropshire. Nestled along the River Severn. Situated about 7 miles southeast of Bridgnorth, it offers a peaceful, rural setting with easy access to nearby towns and amenities. The village is surrounded by scenic countryside, making it ideal for outdoor enthusiasts and those seeking a tranquil lifestyle. With local shops, schools, and transport links nearby, Alveley combines the charm of village life with the convenience of being within reach of larger towns and cities.

DIRECTIONS

Alveley lies halfway between Bridgnorth and Kidderminster on the A442. From Bridgnorth turn right into Daddlebrook Road, and from Kidderminster turn left into Daddlebrook Road, both turns opposite the Royal Oak pub. Greenway Avenue is the second on the left.

ROOMS

GROUND FLOOR

RECEPTION ROOM

The spacious reception room offers a large window to the front elevation.

DINING ROOM

The dining room provides views to the rear aspect as well as access to the garden.

KITCHEN

The fitted kitchen offers ample worktop and storage space as well as views to the rear elevation.

W.C./UTILITY

A white two-piece suite comprising of W.C. as well as worktop and storage space to use as a utility.

FIRST FLOOR

BEDROOM ONE

A spacious double bedroom with ample fitted wardrobe space and views to the rear elevation.

BEDROOM TWO

A further double bedroom with views to the front elevation.

BEDROOM THREE

A single bedroom with views to the rear elevation.

SHOWER ROOM

A white three-piece suite comprising of shower, hand-wash basin and W.C.

EXTERNAL

OUTBUILDING

The outbuilding is a versatile space currently being used as a workshop with a window to the rear aspect as well as power and light.

GARAGE

A single integrated garage with an up-and-over door and a window to the side of the property.

GARDEN

The garden offers patio, gravelled and grassed area, perfect for relaxing or entertaining.

LOCAL AUTHORITY

COUNCIL TAX BAND

POSSESSION AND TENURE

Freehold with vacant possession on completion.

VIEWINGS

Strictly by appointment with the selling agent.

ANTI-MONEY LAUNDERING (AML) CHECKS

We are legally obligated to undertake anti-money laundering checks on all property purchasers. Whilst we are responsible for ensuring that these checks, and any ongoing monitoring, are conducted properly; the initial checks will be handled on our behalf by a specialist company, Movebutler, who will reach out to you once your offer has been accepted. The charge for these checks is £30 (including VAT) per purchaser, which covers the necessary data collection and any manual checks or monitoring that may be required. This cost must be paid in advance, directly to Movebutler, before a memorandum of sale can be issued, and is non-refundable. We thank you for your cooperation.