



# Kew Bridge Road

Brentford, TW8

Asking Price £900,000

Luxuriously appointed Share of Freehold circa 1270 sq ft water side apartment. Two South facing balconies with enviable river views, expansive communal gardens, two parking spaces, residents' gym, sauna & guest rooms. No onward chain.

**CHESTERTONS**



# Kew Bridge Road

## Brentford, TW8

- Share of freehold offering
- 2 balconies and 2 parking spaces
- Guest rooms for exclusive use of apartment owners
- Sauna, steam room, and gym
- On-site concierge (weekdays)
- Situated overlooking the river Thames, opposite Kew Gardens
- No onward chain



Luxuriously appointed second floor riverside apartment measuring a rarely seen circa 1270 sq ft of exceptional lateral living space.

This unique, Share of Freehold offering sees a meticulously refurbished, 2-bedroom, 2-bathroom apartment complete with 2 sizeable south-facing balconies looking onto expansive landscaped communal gardens and the alluring River Thames.

The main living area is a spacious south facing room-comprising kitchen, dining area and lounge measuring 29 ft x 15 ft (Approx) with access to the apartments x 2 balconies.

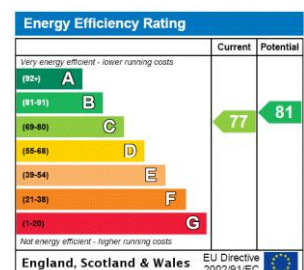
The property benefits from a generous principal bedroom (en-suite) with wall-to-wall glass sliding doors onto a balcony. This room has been redesigned and restyled throughout to include new electric underfloor heating with zone controls, new engineered oak wooden flooring by Neptune, new bespoke / made to measure fitted wardrobes and new LED ceiling lighting. The sumptuous en suite boasts, to a name a few features, a new marble feature wall using Neptune herringbone tiles, washbasin and stand by Neptune and a fabulous free-standing bath by Fired Earth.

The 2nd bedroom (en suite), again of rarely seen proportions being 19ft x 18 ft (Approx) holds large, double-glazed pivot windows, bespoke made-to-measure bookshelves, additional fitted storage and has been newly decorated throughout.

The apartment is sold with 2 parking spaces (one requiring an annual service charge of approx. £250).

The building itself benefits from a fabulous communal entrance with porter service, a resident's gym with sauna & steam room as well as guest rooms that can be used for family & friends when visitina. Reatta Point also has expansive communal aardens with beautiful Gazebo down towards the riverside.

**Tenure:** Share of Freehold  
**Service Charge:** £5750  
**Ground Rent:** £0  
**Local Authority:** Hounslow Council  
**Council Tax Band:** G

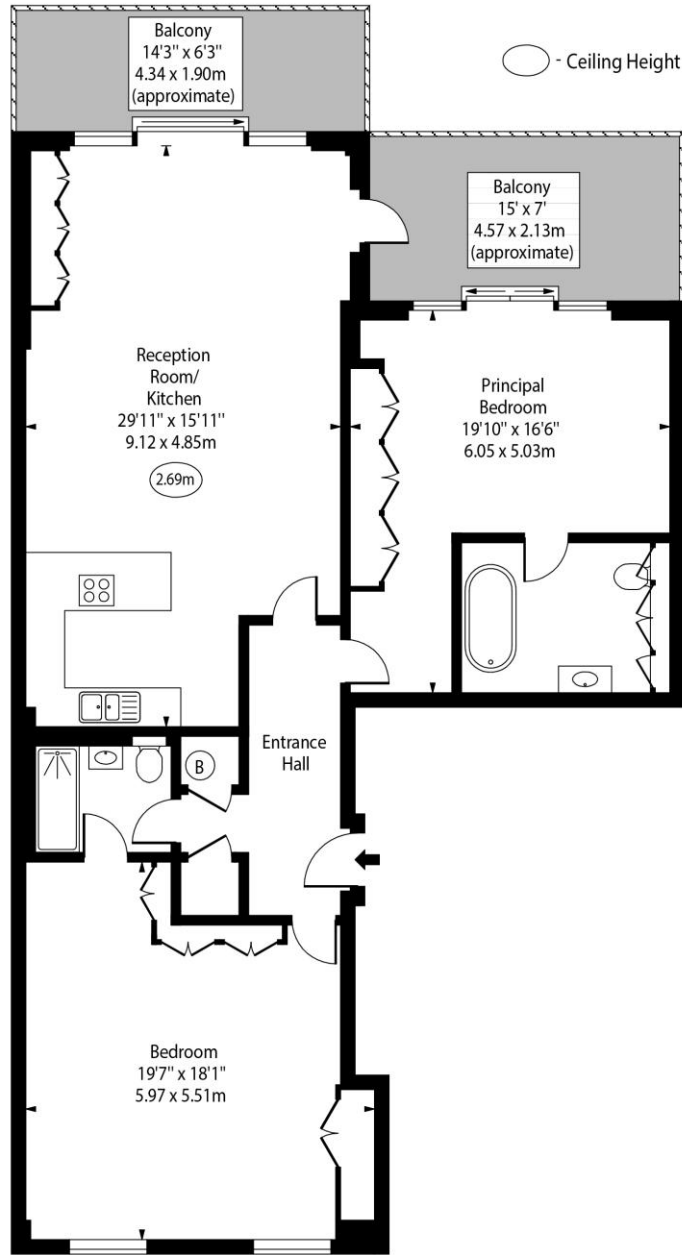


### Chestertons Kew Sales

1 Royal Parade  
 Kew  
 Richmond  
 TW9 3QD  
 kew@chestertons.co.uk  
 020 8104 0340  
 chestertons.co.uk



Regatta Point,  
Kew Bridge Road,  
Brentford,  
Middlesex, TW8



Second Floor

Approx Gross Internal Area 1270 Sq Ft - 117.98 Sq M

Every attempt has been made to ensure the accuracy of the floor plan shown. However, all measurements, fixtures, fittings, and data shown are approximate interpretations and for illustrative purposes only. Measured according to the RICS. Not To Scale.

[www.goldlens.co.uk](http://www.goldlens.co.uk)  
Ref. No. 032241E

