



www.jeffreygross.co.uk

CARDIFF

VALE

CAERPHILLY

BRISTOL

Scholars Drive

PENYLAN



A stunning & extended modern family home

Comments by Mr Ramzy Bancroft



Property Specialist
Mr Ramzy Bancroft
Branch manager

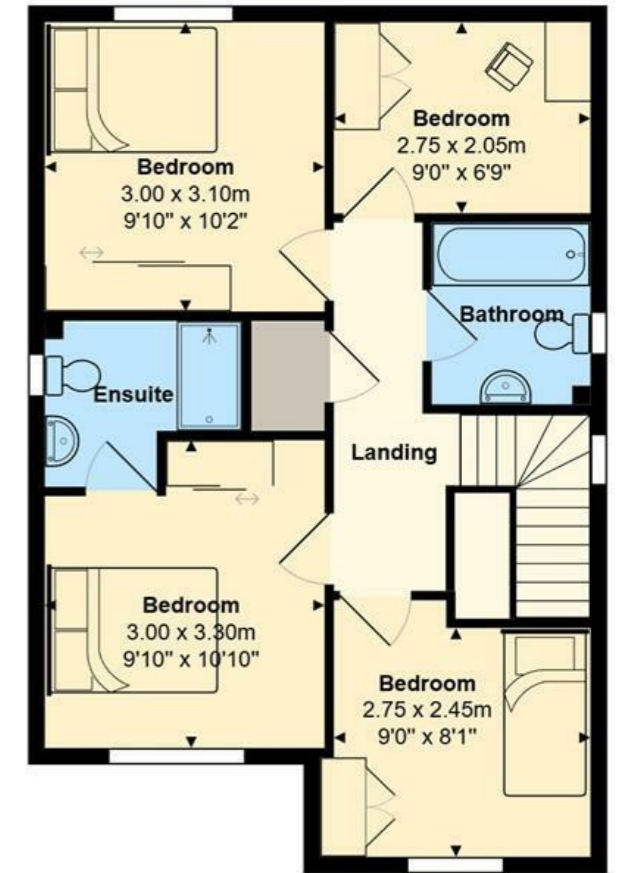
Ramzy@jeffreycross.co.uk



Scholars Drive

Total Area: 119.8 m² ... 1290 ft²

All measurements are approximate and for display purposes only



"We have loved this house and is great for kids and parties !"

Comments by the Homeowner





Scholars Drive

Penylan, Cardiff, CF23 9FE

Offers Over

£475,000



4 Bedroom(s)



2 Bathroom(s)



1280.00 sq ft



Contact our
Penylan Branch

02920 499680



We are happy to offer for sale this stunning and extended modern family home. This beautiful contemporary detached house is nestled in the desirable area of Scholars Drive, Penylan and boasts four well-proportioned bedrooms, making it an ideal family home.

The house has been meticulously maintained, and features a lovely entrance hall, WC, Lounge, super open plan kitchen diner with a great living space to rear with bifold doors to the garden. Upstairs offers a family bathroom, four bedrooms with a ensuite shower room with the main bedroom. Outside there is a landscaped garden ideal for entertaining, as well as a drive way and garage to front offering off road parking. Located close to local schools, shops and parks, making this a great family home.



Hall
WC
 Cardiff High School
 Ysgol Y Berllan Deg
 Ysgol Gyfun Gymraeg Bro Edern
 * Subject to availability *

Bathroom	Tenure Freehold - To be confirmed by your legal advisor
Lounge	Bedroom 3
Bedroom 2	Bedroom 4
Ensuite Shower room	Garden
Kitchen diner	Driveway & Garage
Living space	Council Tax Band F
Landing	
Bedroom 1	
School Catchment Marlborough Primary School	





Energy Efficiency Rating		Current	Potential
Very energy efficient - lower running costs			
(92 plus) A			
(81-91) B			
(69-80) C		78	82
(55-68) D			
(39-54) E			
(21-38) F			
(1-20) G			
Not energy efficient - higher running costs			
England & Wales		EU Directive 2002/91/EC	

