



Guide Price
£220,000

Freehold

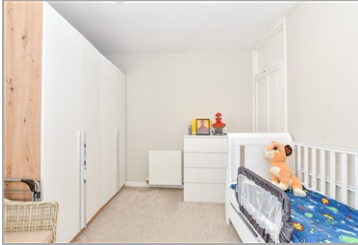
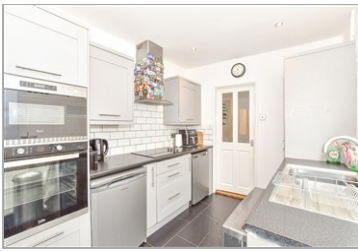
2x  1x  2x 

**Lynn Road, Portsmouth,
Hampshire, PO2**

OVER 60?

Secure this property
for up to **59% less!**

cubitt & west
Helping you move forwards



Main features

- Well presented and neutrally decorated throughout
- Low maintenance private rear garden
- Ideal first time purchase or investment
- Walking distance to transport links and amenities

Accommodation

GROUND FLOOR

Entrance Hallway

Lounge: 12'0 x 9'0 (3.66m x 2.75m)

Dining Room: 12'3 x 9'9 (3.74m x 2.97m)

Kitchen: 9'7 x 7'9 (2.92m x 2.36m)

Bathroom

FIRST FLOOR

Landing

Bedroom 1: 12'2 x 9'10 (3.71m x 3.00m)

Bedroom 2: 12'3 x 9'9 (3.74m x 2.97m)

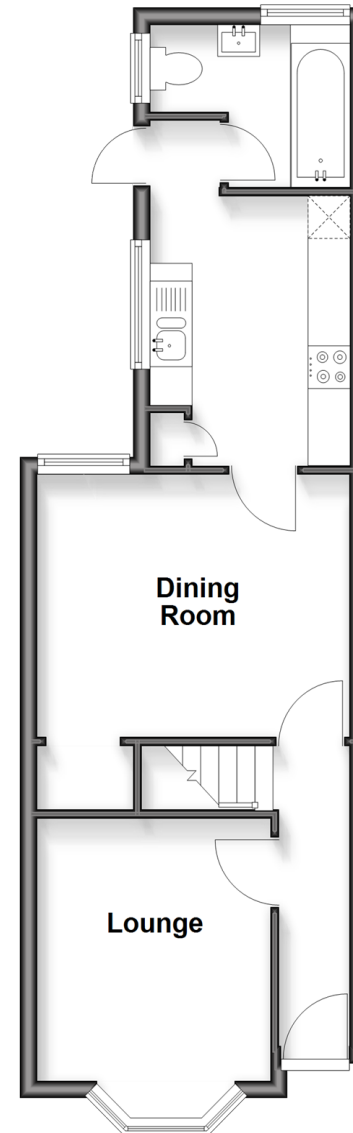
OUTSIDE

Rear Garden

Front Forecourt

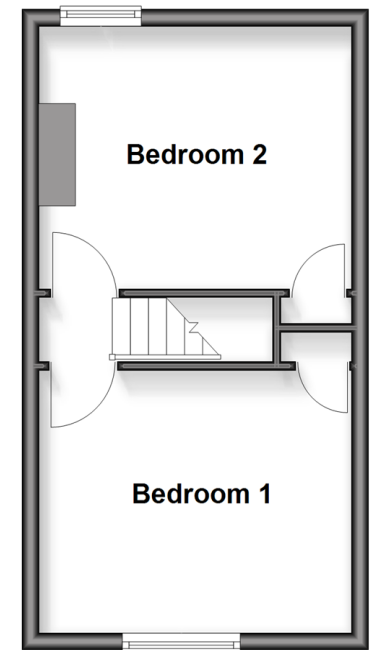
Ground Floor

Approx. 38.8 sq. metres (417.2 sq. feet)



First Floor

Approx. 26.5 sq. metres (284.9 sq. feet)



Call Portsmouth - 023 9266 1213 ■ cubittandwest.co.uk

- A private rental licensing scheme applies to some properties in this area, please check with the Local Authority before proceeding
- Legal advice should be taken to verify fixtures/fittings, planning, alterations and/or lease details
- Appliances & services are untested, dimensions are approximate and floor plans are not to scale
- Through a Homewise Home For Life Plan people aged 60+ can secure this property for up to 59% less, by purchasing a Lifetime Lease



41635212/20260213/MO1/ZMG