



## 32 Horner Street, York, YO30 6EA

SAVE TIME & BOOK YOUR VIEWING ON THE JIGSAW WEBSITE & CLICK 'REGISTER TO VIEW A PROPERTY' FROM OUR MAIN MENU

- Two Bedrooms
- Gas Central Heating
- Council Tax Band: B
- Mid-Terrace
- EPC: C
- Close to Amenities
- York City Centre Location
- Freehold
- On-Street Parking

**£1,200 PCM**

Two Bedroom Mid-Terrace | York City Centre Location | On-Street Parking | Close to Amenities | Furnished or Unfurnished

Jigsaw Letting are pleased to welcome to the market this charming two bedroom mid terrace property nestled on Horner Street in the historic city of York. Offering a delightful blend of comfort and convenience. Built in 1935, the property spans an inviting 742 square feet, providing ample space for modern living.

Upon entering, you are greeted by two well-proportioned reception rooms, perfect for entertaining guests or enjoying quiet evenings at home. The layout is both practical and welcoming, making it an ideal choice for couples, small families, or those seeking a cosy retreat in the heart of the city.

The property features two comfortable bedrooms, providing a peaceful sanctuary for rest and relaxation. The bathroom is conveniently located, ensuring ease of access for all residents. With gas central heating throughout, you can enjoy a warm and inviting atmosphere during the cooler months.

One of the standout features of this home is its prime location. Situated close to York city centre, you will have easy access to a wealth of amenities, including shops, restaurants, and cultural attractions. Additionally, on-street parking is available, making it convenient for those with vehicles.

This mid-terrace house on Horner Street presents a wonderful opportunity to embrace city living while enjoying the comforts of a well maintained home. This property is sure to impress with its character, location, and potential.

### **COUNCIL TAX BAND**

Please note that the council tax band for the property has either been advised by the owner or we have sought from online resources. Whilst we endeavour to ensure our details are accurate and reliable, we strongly advise to make further enquiries before continuing.

### **HOW DO I APPLY FOR A PROPERTY?**

To avoid disappointment please contact the office to request an application form for the property you wish to apply for following your viewing.

### **LETTINGS FEES UPON APPLICATION**

Additional fees apply for this property and are as follows; 1 weeks rent holding fee for each property. Please note, the holding fee is deductible from the first month's rent on the property if successful. There will also be a bond for the property equal to 5 weeks rent which will be held for the duration of the tenancy with the DPS. Go to, [www.jigsawletting.co.uk](http://www.jigsawletting.co.uk) or call for more details

### **LETTINGS VIEWINGS**

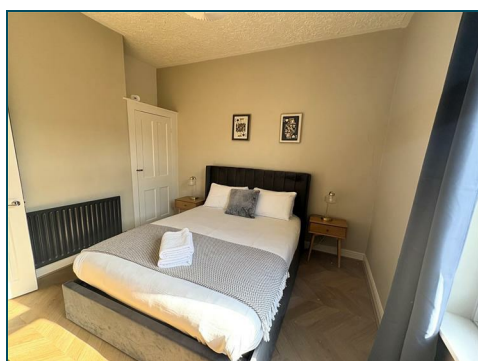
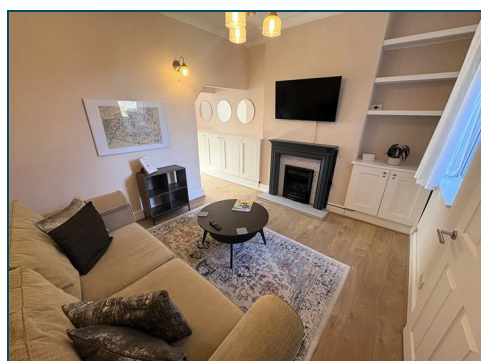
Strictly by appointment with the sole agents by contacting 01757 241123. If there is any point of particular importance to, that we will be pleased to provide additional information or to make any further enquiries. We will also confirm that the property remains available. This is particularly important if you are travelling some distance to view the property. A full copy of the EPC for the property is available upon request.

### **OPENING HOURS LETTING TEAM**

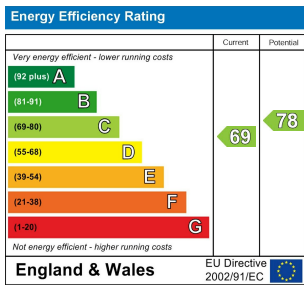
Monday – Friday 9.00am to 5.00pm Saturday – 9.00am – 1.00pm

### **TO LET PROPERTY DETAILS**

Whilst we endeavour to make our property details are accurate and reliable, if there is any point which is of particular importance to you, please contact us and we will be pleased to check the information. Do so particularly if contemplating travelling some distance. These particulars are issued in good faith but do not constitute representations of fact or form part of any offer or contract.







**safeagent**  
11 Finkle Street, Selby, North Yorkshire, YO8 4DT  
info@jigsawmove.co.uk | www.jigsawmove.co.uk | info@jigsawletting.co.uk | www.jigsawletting.co.uk  
Jigsaw Move : 08975826 VAT: 215610542 | Jigsaw Letting : 07385709 VAT: 847215227



Look for Propertymark Protection to ensure your agent is qualified and regulated