







Rosehill Road, Ipswich, Suffolk

£1,150 Per month

 3  1  1  D

Grace Estate Agents are pleased to offer this three-bedroom terraced house to let on Rosehill Road, Ipswich.

The property offers well-proportioned accommodation throughout, including a spacious reception room, a modern fitted kitchen, and a ground floor bathroom.

Upstairs, there are three good-sized bedrooms, providing flexible living space.

Located in a popular residential area, the property is within easy reach of local amenities, schools, and Ipswich town centre, making it a convenient and practical place to live.

Externally, the property benefits from a rear garden and on-road parking.

This is a great opportunity to rent a well-located home in Ipswich. Early viewing is recommended.

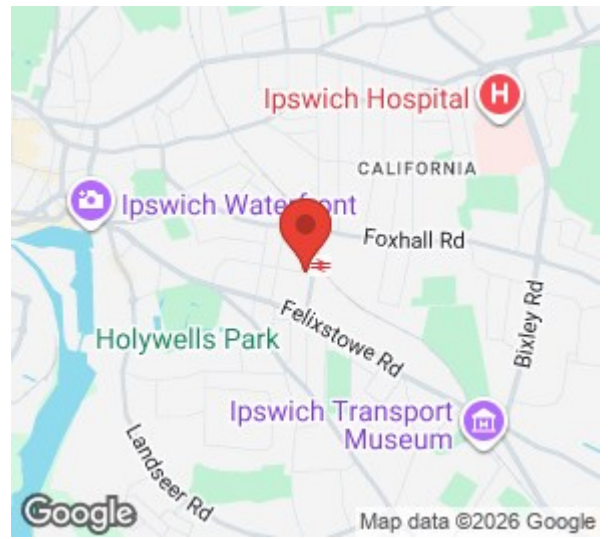
£1,150 Per month

Viewing

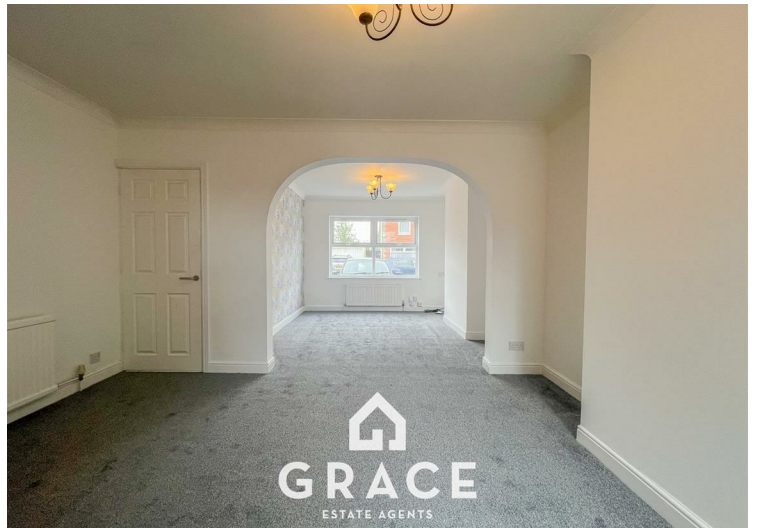
Please contact our Grace Estate Agents Office on 01473 747728 if you wish to arrange a viewing appointment for this property or require further information.

- Three Bedroom Terraced Home
- Driveway for One Vehicle
- Close to Town Centre with Good Transport Links
- Copleston School Catchment
- Unfurnished
- Brand new carpets downstairs
- Brand new bathroom flooring
- Available Now


GRACE
ESTATE AGENTS



Energy Efficiency Rating		Environmental Impact (CO ₂) Rating			
Very energy efficient - lower running costs	Current	Potential	Very environmentally friendly - lower CO ₂ emissions	Current	Potential
(92 plus) A			(92 plus) A		
(81-91) B			(81-91) B		
(69-80) C			(69-80) C		
(55-68) D			(55-68) D		
(38-54) E			(38-54) E		
(21-38) F			(21-38) F		
(1-20) G			(1-20) G		
Not energy efficient - higher running costs			Not environmentally friendly - higher CO ₂ emissions		
England & Wales		EU Directive 2002/91/EC	England & Wales		EU Directive 2002/91/EC



These particulars, whilst believed to be accurate are set out as a general outline only for guidance and do not constitute any part of an offer or contract. Intending purchasers should not rely on them as statements of representation of fact, but must satisfy themselves by inspection or otherwise as to their accuracy. No person in this firm's employment has the authority to make or give any representation or warranty in respect of the property.