



Connells

Union Street
Kettering



Property Description

This well-presented mid-terraced home offers thoughtfully arranged accommodation across two floors and is complemented by a rear garden. The property is being sold with a tenant in situ, making it an attractive opportunity for investors.

The ground floor opens into an entrance hall leading through to a spacious sitting room, providing a comfortable living area with stairs rising to the first floor. To the rear of the property is a modern kitchen/dining room, well suited to everyday living and entertaining, with access out to the rear garden. A useful lobby area and ground floor W.C. add further practicality to the layout.

To the first floor, the property offers two bedrooms, including a generous main bedroom and a well-sized second bedroom, both served by a fitted family bathroom accessed from the landing.

The property offers well-balanced living accommodation in a popular residential setting and would particularly suit investors seeking an immediate rental return. Early viewing is recommended to appreciate the layout and accommodation on offer.

Ground Floor

Entrance Hall

Entrance door to the front, stairs to the first floor.

Sitting Room

Window to the front, under stairs storage cupboard, laminate flooring, radiator.

Kitchen / Dining Room

Window to the rear, a range of wall and base units with rolled edge work surfaces, sink drainer, tiled splash backs, space for appliances, tiled flooring.

Lobby

Externally door leading to the rear garden.

Cloakroom

Window to the side, wash hand basin, low level WC, tiled splash back.

First Floor

Landing

Bedroom One

Window to the front, built in storage cupboard, carpet flooring, radiator.

Bedroom Two

Window to the rear, carpet flooring, radiator.

Bathroom

Window to the rear, bath with shower over, wash hand basin, low level WC, tiled splash backs, vinyl flooring, radiator.

Externally

Front Garden

Enclosed by fencing, laid to lawn.

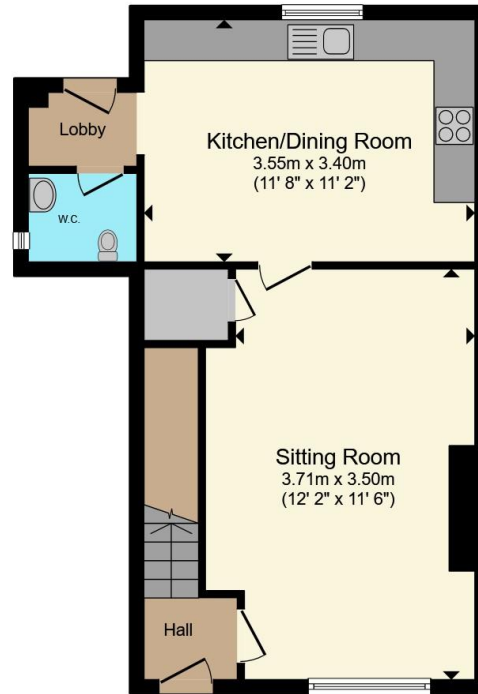
Rear Garden

Enclosed by fencing, laid to lawn.

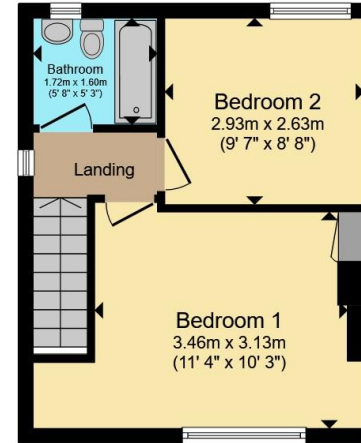








Ground Floor



First Floor

Total floor area 80.2 m² (863 sq.ft.) approx

This floor plan is for illustrative purposes only. It is not drawn to scale. Any measurements, floor areas (including any total floor area), openings and orientation are approximate. No details are guaranteed, they cannot be relied upon for any purpose and they do not form part of any agreement. No liability is taken for any error, omission or misstatement. A party must rely upon its own inspection(s). Powered by www.propertybox.io



To view this property please contact Connells on

T 01536 411 811
E kettering@connells.co.uk

5 Montagu Street
 KETTERING NN16 8XG

EPC Rating: D Council Tax Band: A

Tenure: Freehold

view this property online connells.co.uk/Property/KTT308780



1. MONEY LAUNDERING REGULATIONS Intending purchasers will be asked to produce identification documentation at a later stage and we would ask for your co-operation in order that there will be no delay in agreeing the sale. 2. These particulars do not constitute part or all of an offer or contract. 3. The measurements indicated are supplied for guidance only and as such must be considered incorrect. Potential buyers are advised to recheck measurements before committing to any expense. 4. We have not tested any apparatus, equipment, fixtures, fittings or services and it is in the buyers interest to check the working condition of any appliances.

Connells Residential is registered in England and Wales under company number 1489613, Registered Office is Cumbria House, 16-20 Hockliffe Street, Leighton Buzzard, Bedfordshire, LU7 1GN. VAT Registration Number is 500 2481 05.

See all our properties at www.connells.co.uk | www.rightmove.co.uk | www.zoopla.co.uk

Property Ref: KTT308780 - 0003