



Wapping Wall, E1W

£900,000

Dexters



Wapping Wall, E1W

Offering river and Canary Wharf views is this two bedroom warehouse conversion with over 1,230 Sq.Ft of ample living space. The property features exposed brickwork, an open plan reception room, private balcony, allocated parking and concierge service.

Merchant Court is ideally located for Wapping Overground station which provide good links to the City. Riverside Restaurants and coffee houses and the the Thames Pathway are also within easy reach.

Features

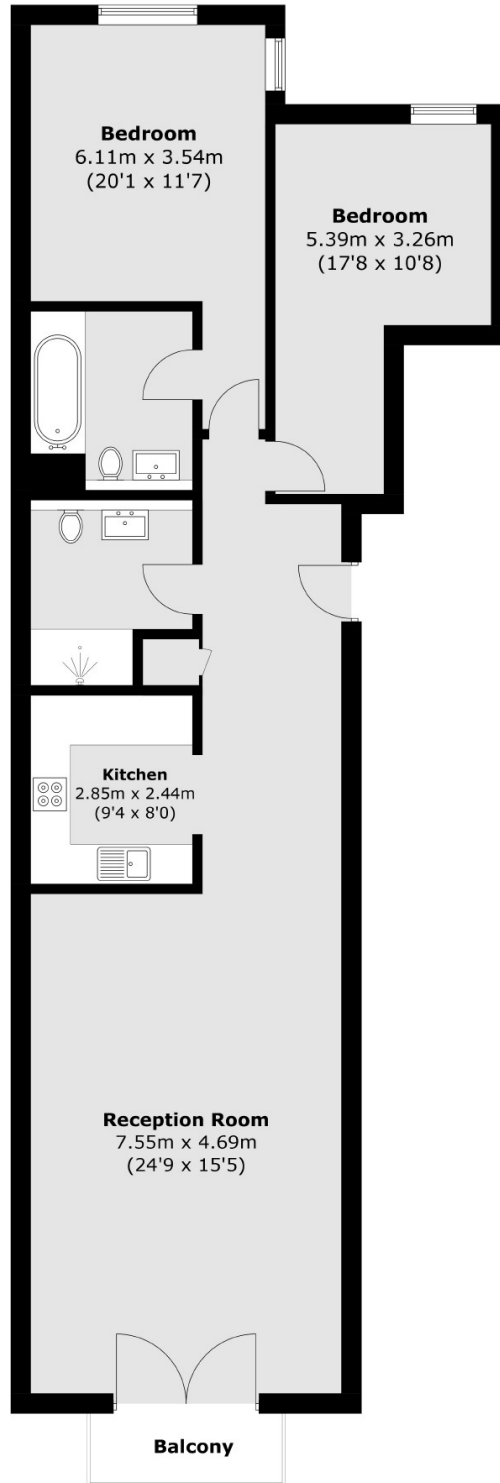
- Over 1,120 Sq Ft
- Private Balcony
- River and Canary Wharf Views
- Warehouse Conversion
- Central Wapping Location
- Allocated Parking







Wapping Wall, London, E1W



Ground Floor

Total area (approx.): 104.2 sq. m (1,121.6 sq. ft)
Balcony: 3.0 sq. m (32.3 sq. ft)