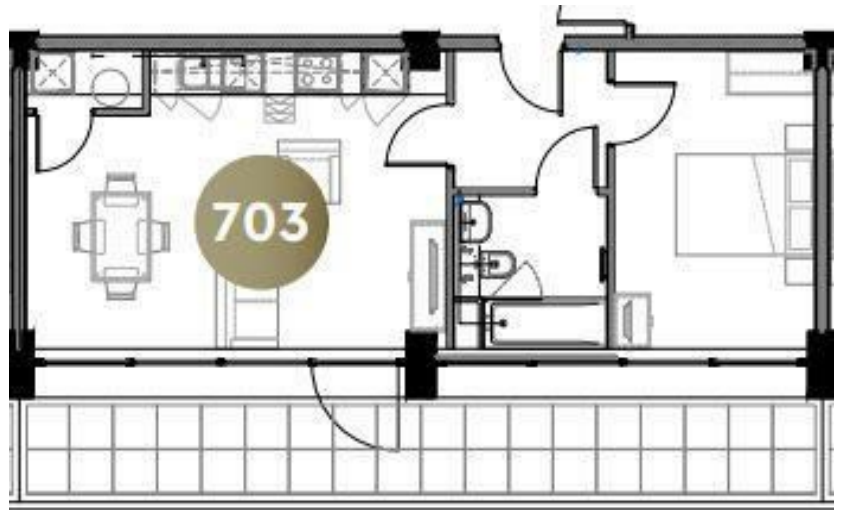




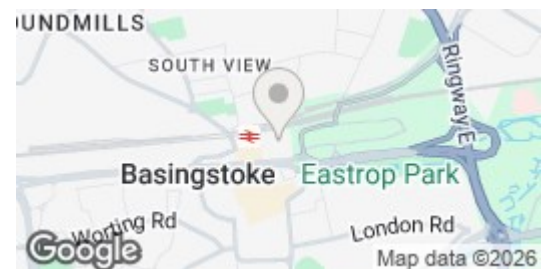
Normandy House | Alencon Link | Basingstoke | RG21 7DG

£1,285

Waterfords 
Residential Sales & Lettings



Energy Efficiency Rating		Current	Potential
Very energy efficient - lower running costs			
(92 plus)	A		
(81-91)	B		
(69-80)	C		
(55-68)	D	67	67
(39-54)	E		
(21-38)	F		
(1-20)	G		
Not energy efficient - higher running costs			
England & Wales		EU Directive 2002/91/EC	



Description

Waterfords are delighted to present a collection of contemporary converted apartments in the heart of Basingstoke. Normandy House is ideally located on the bustling Alexon link within minutes walk of the Mainline Station. This modern development offers a range of one and two bedroom apartments.

Key features

- Modern Apartments
- Secure Multi Story Car Park On Site
- LED Mirror With Shaver Socket & Demister Function
- Town Centre Location
- Minimum Term 12 Month Let
- One Bedroom & Two Bedroom Apartments
- Integrated Fridge Freezer, Dishwasher, Ceramic Hob & Electric Oven
- Rain Shower & Heated Towel Rail
- Council Tax - C
- Available June 2026



39 The Hart Centre
 Fleet
 Hampshire
 GU51 3LA
 01252 623330
hampshirelettings@waterfords.co.uk
<https://www.waterfords.co.uk/>