

# SNELLERS

ESTATE AGENTS

---



**Vincam Close, TW2**

**£799,950**

This exceptional property offers a perfect blend of contemporary design and eco-conscious living.



Finished to a high standard throughout, it boasts a spacious and well-appointed layout, featuring three generously sized bedrooms, ideal for families or those seeking additional space.

Set on a substantial plot, the property benefits from ample off-street parking for multiple vehicles, accessed via a gated private entrance. The large garden provides excellent outdoor space, perfect for entertaining and relaxing.

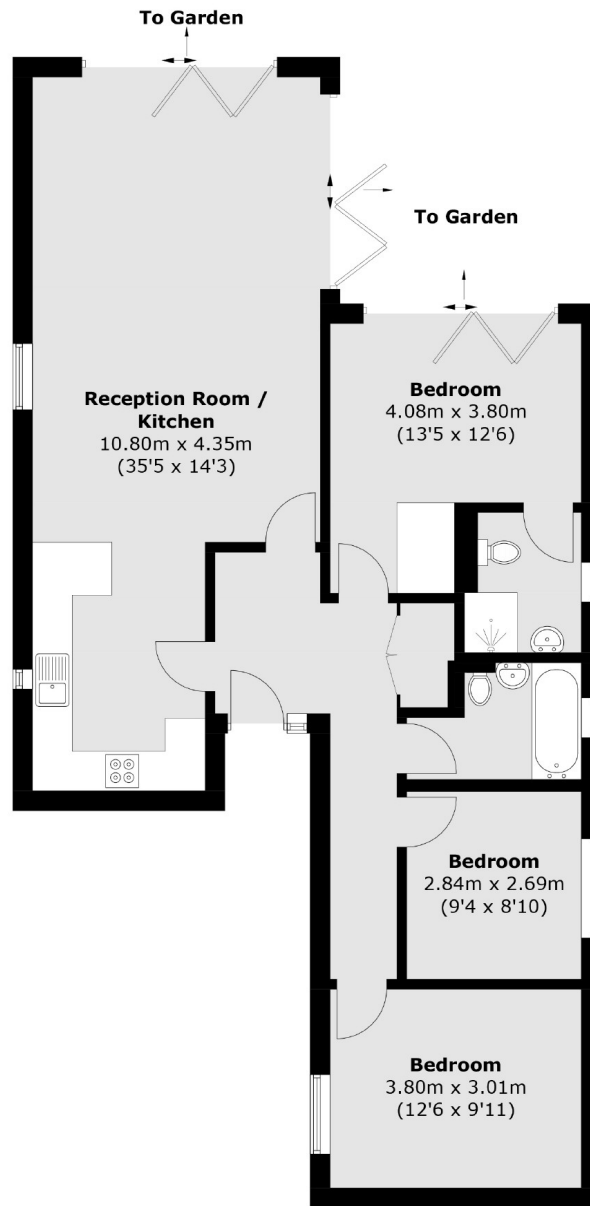
Vincam Close is ideally located for Whitton mainline station with its frequent train service to London Waterloo and the high street with its wide array of shops is also close by. There are also a number of popular primary and secondary schools nearby.

- Eco House • No Onward Chain • Detached •
- Gated Entrance • Three Bedrooms • Two Bathrooms •



# SNELLERS

ESTATE AGENTS



Total area (approx.): 97.0 sq. m (1,044.1 sq. ft)

Snellers Twickenham Sales  
64-66 Heath Road  
Twickenham  
TW1 4BX  
020 8892 5555  
twickenhamsales@snellers.co.uk

Energy Rating: We aim to make our particulars both accurate and reliable. However they are not guaranteed; nor do they form part of an offer or contract. If you require clarification on any points then please contact us, especially if you're traveling some distance to view. Please note that appliances and heating systems have not been tested and therefore no warranties can be given as to their good working order