



## Lady Margaret Road, N19

### £450,000

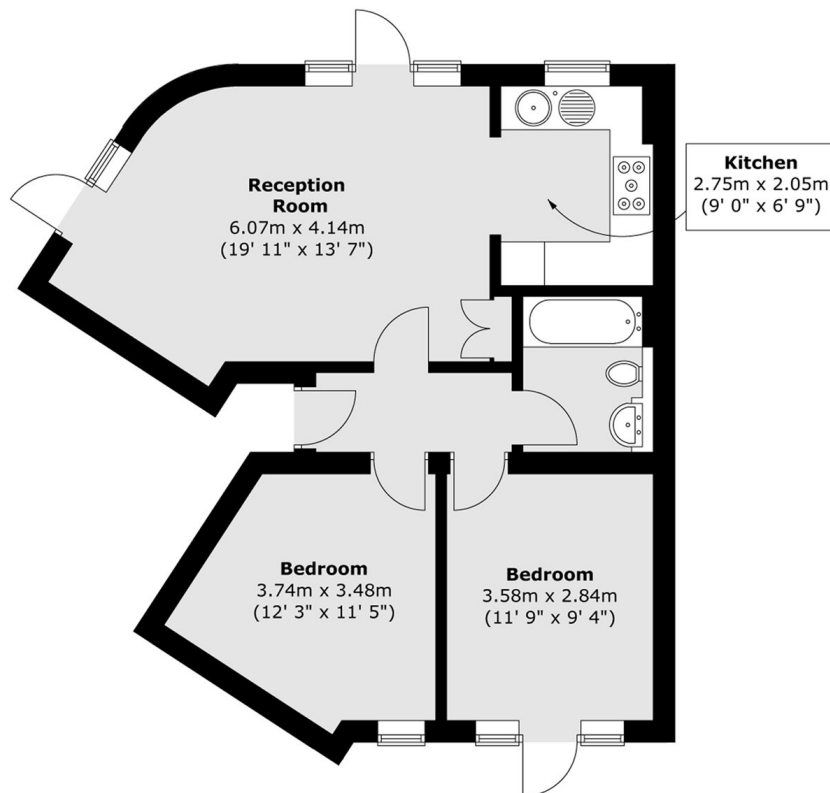
A spacious two bedroom apartment within a private purpose built block. This property benefits from an open plan kitchen/living area, two private patios and comes with a share of the freehold.

On the borders of Tufnell Park and Kentish Town and equidistant from their Northern line stations. Close to a fine selection of local shops, fantastic schools, and in the catchment for Eleanor Palmer Primary School.

### Features

- Two Bedrooms
- Two Private Patios
- Great Transport Links
- Open Plan Living
- Chain Free
- Share of Freehold

# Lady Margaret Road, London, N19



Total area (approx.) : 56.5 sq. m (608 sq. ft)