



Connells

Grove Road
Maidstone

Grove Road
Maidstone ME15 9AR

for sale guide price
£300,000



Property Description

Guide Price of £300,000 - £315,000

Spacious three bedroom end-terraced home with a driveway to the front and a large rear garden. This property sits in a convenient location close to local shops, making everyday amenities easily accessible. The end-terraced layout provides added privacy and exterior space, while the large rear garden offers plenty of room for outdoor entertaining, gardening, or play. Inside, you'll find a well-proportioned layout with comfortable living spaces and bedrooms suited for families or those needing extra room. Don't miss the opportunity to make this well-positioned property your new home. Contact us for more details or to arrange a viewing.



Entrance Porch

Entrance Hall

Lounge

12' 4" Max x 11' 7" Max (3.76m Max x 3.53m Max)

Kitchen/Diner

18' 6" Max x 10' 9" Max (5.64m Max x 3.28m Max)

Conservatory

15' 4" x 8' (4.67m x 2.44m)

Bedroom One

11' 9" x 8' 6" (3.58m x 2.59m)

Bedroom Two

12' 4" Into Recess x 9' 1" Into Recess (3.76m Into Recess x 2.77m Into Recess)

Bedroom Three

8' 8" Into Recess x 7' 8" Into Recess (2.64m Into Recess x 2.34m Into Recess)

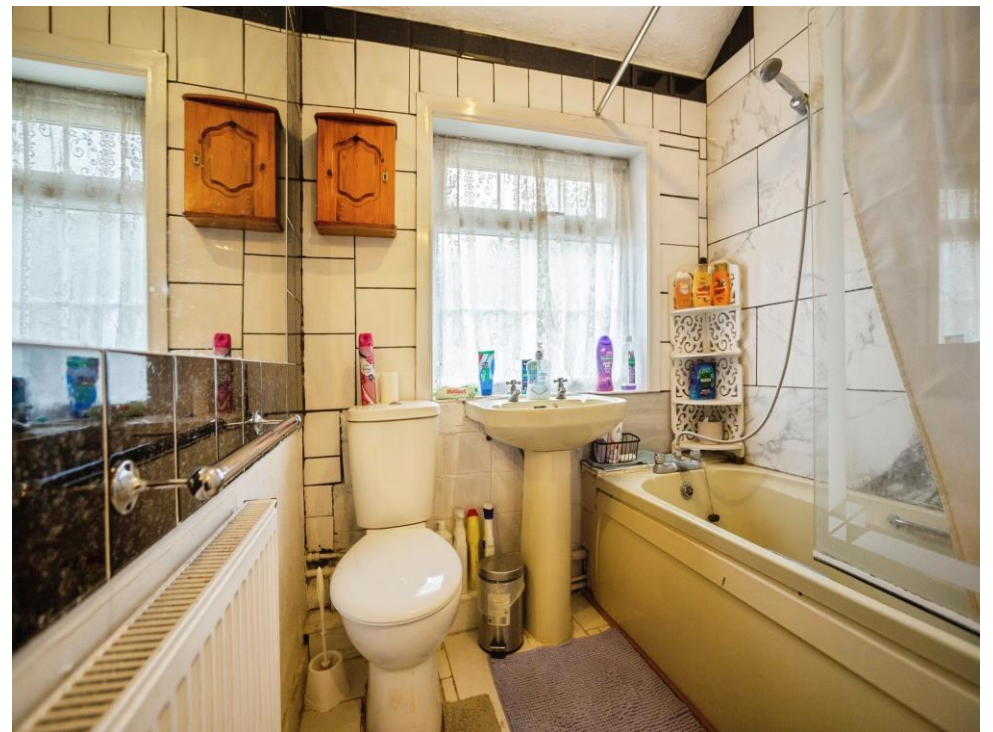
Bathroom

Front Garden

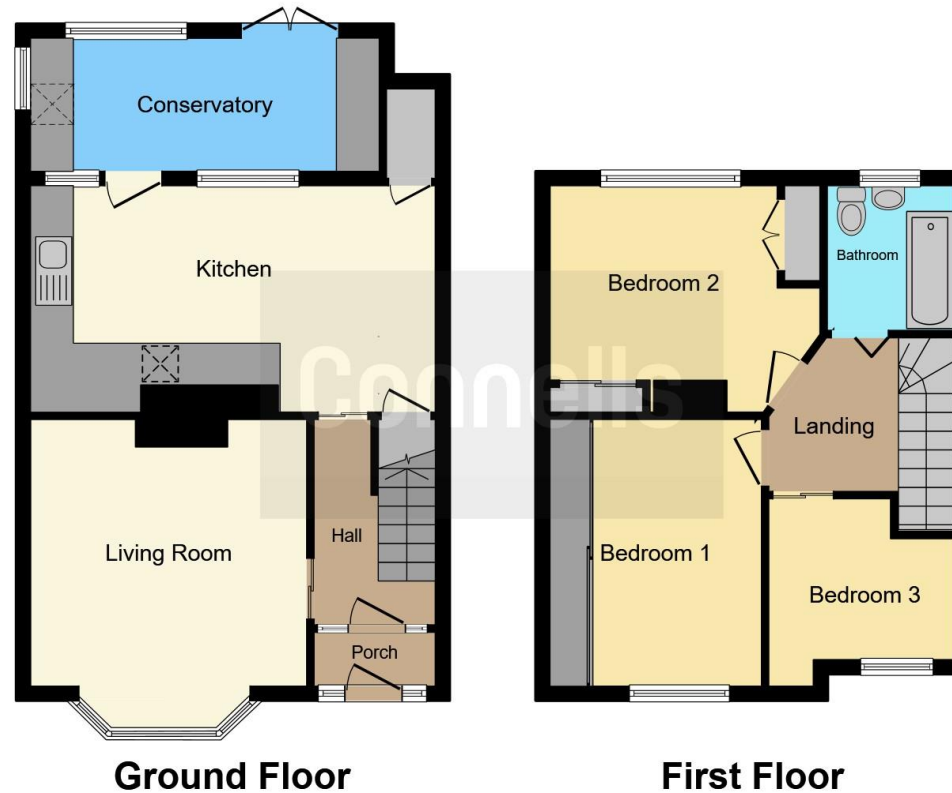
Rear Garden

Driveway









This floor plan is for illustrative purposes only. It is not drawn to scale. Any measurements, floor areas (including any total floor area), openings and orientation are approximate. No details are guaranteed, they cannot be relied upon for any purpose and they do not form part of any agreement. No liability is taken for any error, omission or misstatement. A party must rely upon its own inspection(s). Powered by www.focalagent.com

To view this property please contact Connells on

T 01622 751034
E maidstone@connells.co.uk

30 King Street
 MAIDSTONE ME14 1BS

EPC Rating: C Council Tax
 Band: B

Tenure: Freehold

view this property online connells.co.uk/Property/MAI408196



1. MONEY LAUNDERING REGULATIONS Intending purchasers will be asked to produce identification documentation at a later stage and we would ask for your co-operation in order that there will be no delay in agreeing the sale. 2. These particulars do not constitute part or all of an offer or contract. 3. The measurements indicated are supplied for guidance only and as such must be considered incorrect. Potential buyers are advised to recheck measurements before committing to any expense. 4. We have not tested any apparatus, equipment, fixtures, fittings or services and it is in the buyers interest to check the working condition of any appliances.

Connells Residential is registered in England and Wales under company number 1489613, Registered Office is Cumbria House, 16-20 Hockliffe Street, Leighton Buzzard, Bedfordshire, LU7 1GN. VAT Registration Number is 500 2481 05.

See all our properties at www.connells.co.uk | www.rightmove.co.uk | www.zoopla.co.uk

Property Ref: MAI408196 - 0012