

PALM COURT

PALMERSTON ROAD | SOUTHSEA | PO5 3RH



£195,000
Leasehold

- Ground Floor Apartment
- Excellent Central Southsea Location
- Short Walk to Main Shopping Precinct & Seafront
- Two Bedrooms plus Bathroom with Separate Shower
- Open Plan Living Room & Kitchen
- Gas Central Heating & Double Glazing
- Allocated Parking Bay & Lock-Up Shed
- Early Viewing Strongly Recommended



In Brief

Ideally located in the heart of Southsea, 2 Palm Court offers a fantastic opportunity for first-time buyers or investors looking to put their own stamp on a property. This ground-floor apartment provides the ultimate convenience of single-level living and boasts the rare, highly coveted bonus of an allocated parking space. While the interior would benefit from cosmetic updating, it is entirely functional and ready to move into from day one.

The property is offered with no forward chain, ensuring a smooth and swift transaction with no onward delays. Its practical layout features a well-proportioned living space that serves as a completely blank canvas, allowing you to comfortably live in the apartment while modernising it at your own pace to add serious value.

Positioned just moments from the vibrant local cafes, independent shops, and the bustling seafront, the location truly speaks for itself. Whether you are looking to take your first step onto the property ladder or seeking a lucrative project in a prime coastal hotspot, this apartment represents excellent potential and is available for immediate viewing.

£195,000

KEY FACTS

Tenure: Leasehold Approximately 104 years remaining

Service Charge: £1,9000 p.a. Ground Rent £175 p.a.

Council tax Band: B

EPC Rating: C



PALM COURT

PALMERSTON ROAD | SOUTHSEA | PO5 3RH

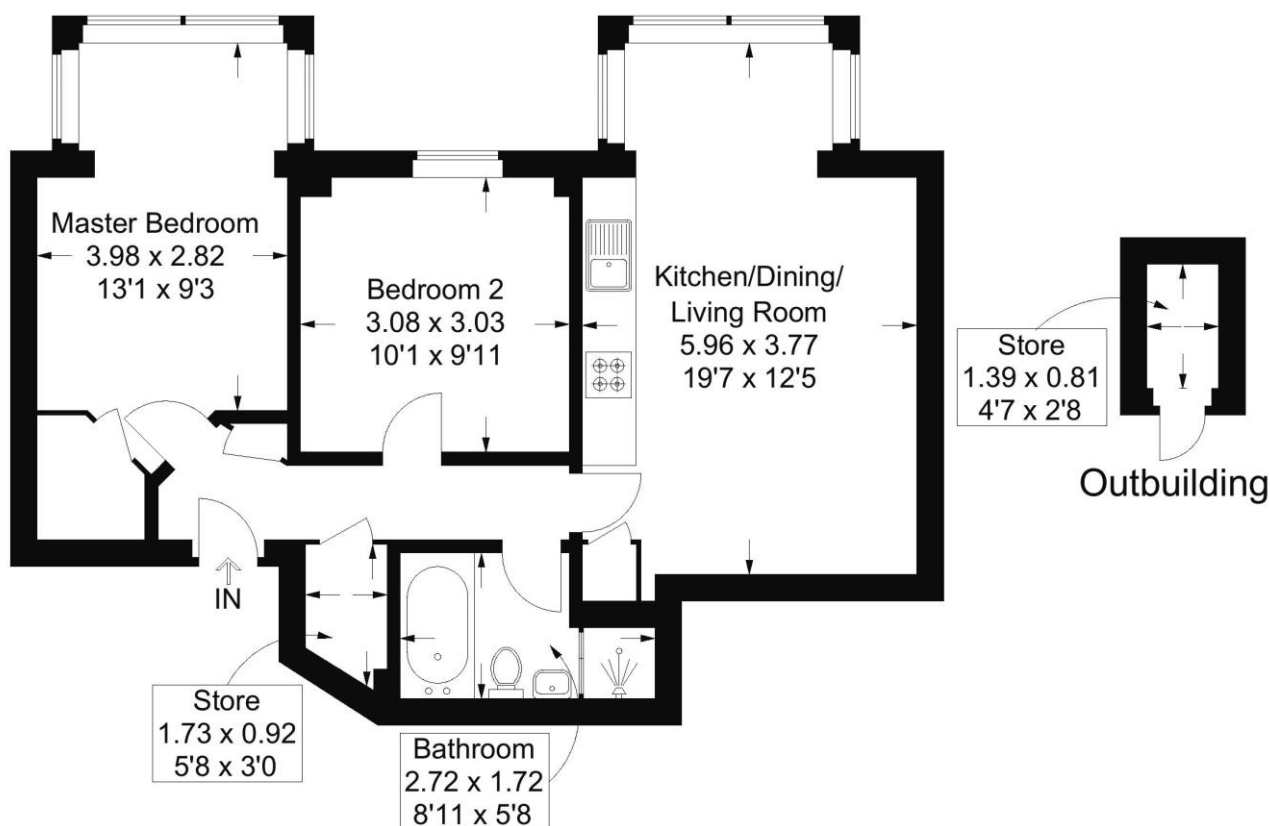


Palm Court, Palmerston Road, Southsea

Approximate Gross Internal Area = 55.4 sq m / 596 sq ft

Outbuilding = 1.3 sq m / 14 sq ft

Total = 56.7 sq m / 610 sq ft



Ground Floor

This plan is for layout guidance only. Not drawn to scale unless stated. Windows and door openings are approximate. Whilst every care is taken in the preparation of this plan, please check all dimensions, shapes and compass bearings before making any decisions reliant upon them.

Southsea
Sales & Lettings
7/9 Stanley Street,
Southsea, PO5 2DS
Tel: 023 9281 5221

Old Portsmouth & Gunwharf Quays
Sales & Lettings
The Seagull, 13 Broad Street,
Old Portsmouth, PO1 2JD
Tel: 023 9281 5221

Drayton & Out of Town
Sales & Lettings
139 Havant Road,
Drayton, PO6 2AA
Tel: 023 9221 0101

London
Sales & Lettings
Mayfair Office, Cashel House,
15 Thayer Street, W1U 3JT
Tel: 0870 112 7099

Southsea
Admin Centre
12 Marmion Road,
Southsea, PO5 2BA
Tel: 023 9282 2300

www.fryandkent.com