

Rosemount Road, Flax Bourton

Asking Price £875,000

- Four Bedroom Detached Family Home
- Stylish & High Level Finish Throughout
- Desirable Farleigh Green Development
- Quiet Cul-De-Sac Location
- Stunning Open Plan Kitchen / Dining / Family Room
- Two Further Reception Room
- Family Bathroom & Two En-Suite Shower Rooms
- Private Landscaped Rear Gardens
- Detached Double Garage & Off Steet Parking

SUMMARY

This superb detached, family home was built by the renowned Persimmon Homes and is situated in an exclusive location on the outskirts of the pretty village of Flax Bourton. The property is beautifully presented and offers a high level finish throughout. The accommodation is laid over two floors with the ground floor consisting of a stunning open plan kitchen / dining / family room with a range of base and wall units with quartz worktop over, four ring induction hob, integrated fridge, freezer, double oven and washing machine. There is a study to the front and a generous living room with gas fireplace with access to the rear garden and a downstairs WC. The first floor accommodation includes four bedrooms, two of which have en-suite shower rooms and a family bathroom. Outside to the rear is a stylish landscaped garden with a southerly orientation which is mainly laid to lawn and a patio area perfect for alfresco dining. There is access to the double garage as well as side access to the private driveway.

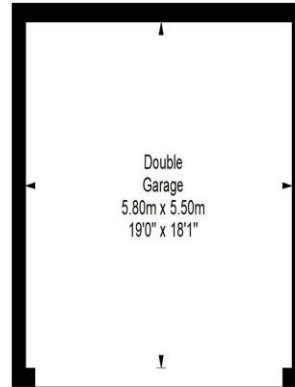


Rosemount Road, Bristol, BS48 1UQ

Approximate Gross Internal Area = 168.2 sq m/ 1810.5 sq ft
(Double Garage)

Double Garage = 31.9 sq m/ 343.4 sq ft

Total Area = 200.1 sq m/ 2153.9 sq ft

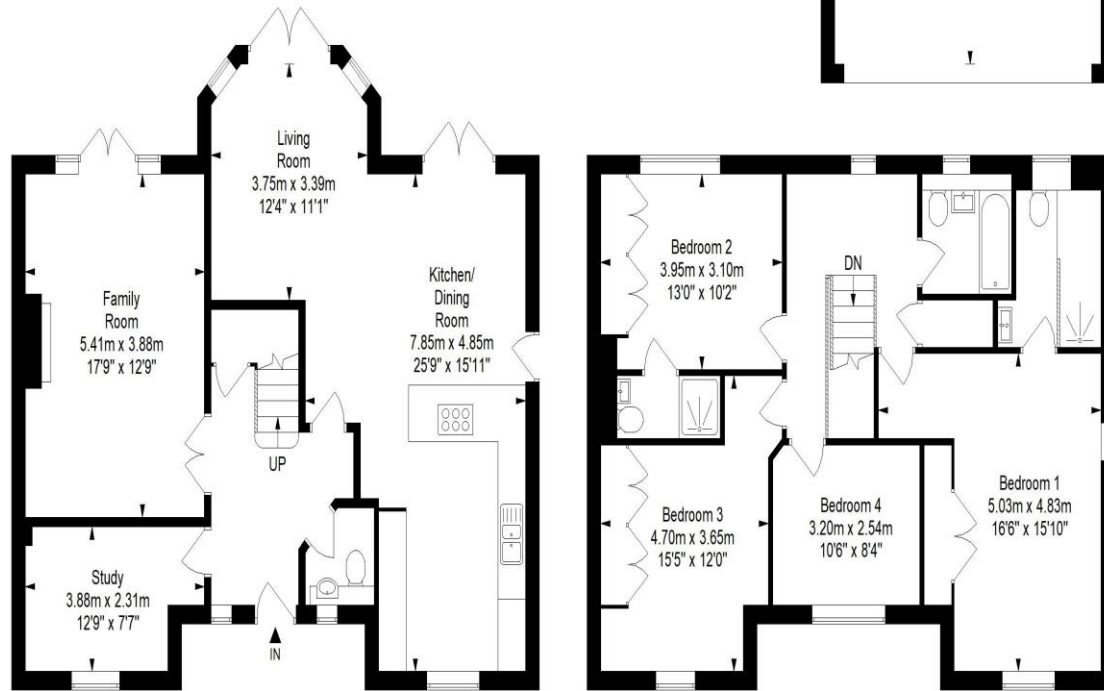


Tenure
Freehold

EPC Rating
D

Council Tax Band
G

Services



Ground Floor

First Floor

This floor plan has been drawn using RICS guidelines (GIA)

Disclaimer: Please note this floor plan is for marketing purposes and is to be used as guide only.
All Efforts have been made to ensure its accuracy at time of print

Clifton : 01179 744 766
Long Ashton : 01275 393 956
Southville : 01174 523 700

