



**GROSVENOR ROAD**  
PIMLICO

**JACKSON-STOPS** 

---

## GROSVENOR ROAD PIMLICO, SW1V

ASKING PRICE: £2,750 PCM

A spacious studio flat with stunning river views, ample storage, 24/7 concierge, and on-site gym in a well-maintained development.

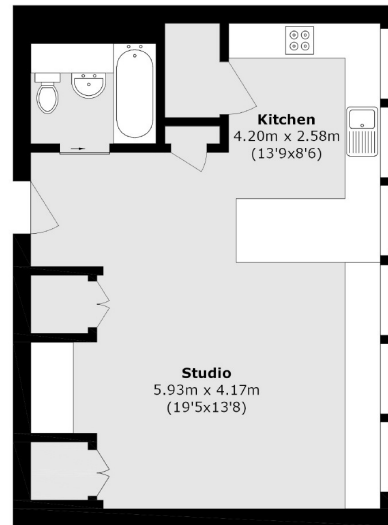
Just 0.2 miles from Pimlico Underground Station, 0.3 miles from Vauxhall Station and 0.9 miles from St. James's Park Station.



### KEY FEATURES

- Studio
- Bathroom
- River Views
- Concierge
- Gym
- Tax Band: F





Total area (approx.): 49.6 sq. m (534.0 sq. ft)

Energy Rating: B. We aim to make our particulars both accurate and reliable. However they are not guaranteed; nor do they form part of an offer or contract. If you require clarification on any points then please contact us, especially if you are travelling some distance to view. Please note that appliances and heating systems have not been tested and therefore no warranties can be given as to their good working order.

**ASKING PRICE: £2,750 PCM**

**PIMLICO**

**020 7828 4243**

[pimlicolettings@jackson-stops.com](mailto:pimlicolettings@jackson-stops.com)

[jackson-stops.co.uk](http://jackson-stops.co.uk)

**JACKSON-STOPS** 