



Key Features

- ◆ Sought after Roselands area
- ◆ Three-bedroom, semi-detached house
- ◆ Large private garden
- ◆ Modern, spacious kitchen and bathroom
- ◆ Freehold
- ◆ EPC rating D



Burleigh Place, Roselands, Eastbourne

£320,000



Northwood are delighted to welcome to market this three-bedroom house in the popular Roselands area of Eastbourne.

Accommodation comprises of a living room, spacious kitchen, three bedrooms and bathroom with shower over bath.

Further benefits include private parking space, large private garden, modern sunroom and a modern, spacious living room

Located in the Roselands area of Eastbourne, close to local shops and amenities, this lovely family home deserves to be seen.





Please view our immersive virtual tour to fully appreciate this fantastic property: <https://tour.giraffe360.com/b0f94828249142e2bf3f4de81e26c228>

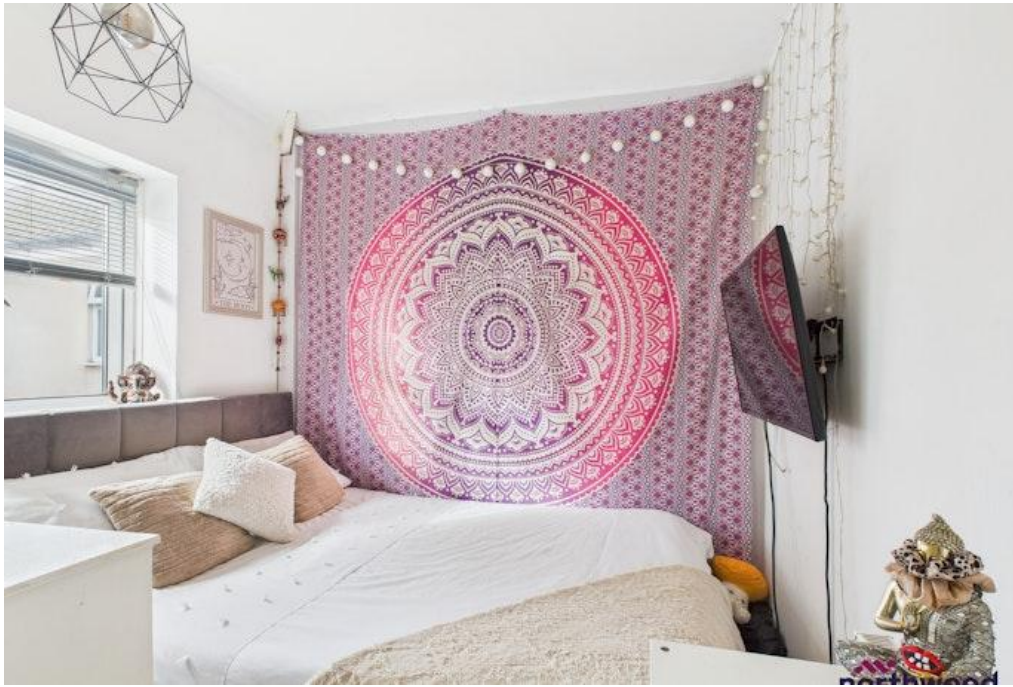
Mobile Phone Coverage and Broadband speeds can be checked on the Ofcom website: <https://checker.ofcom.org.uk/>

Council Tax Band B: £2065











Northwood

81-83 South Street
 Eastbourne
 BN21 4LR
 01323 744544
 eastbourne@northwooduk.com