



73 Chamberlayne Road, Eastleigh, SO50 5JJ

**Offers over £250,000**



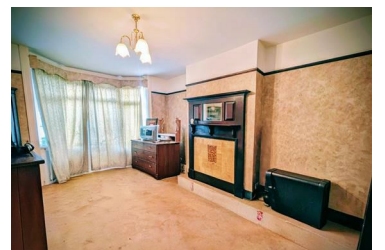
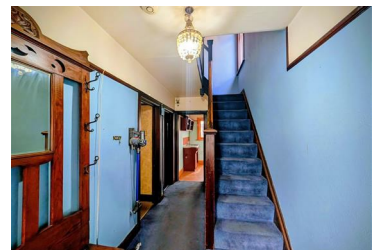
\*\* OPEN DAY ONLY SUNDAY 22ND FEBRUARY \*\*

\*\* PLEASE DO NOT REQUEST SEPARATE/EARLIER DAYS \*\*

Offered with a NO FORWARD CHAIN I am delighted to present this spacious three bedroom semi detached family home within walking distance to Eastleigh town centre!!

Internally the property comprises of entrance hallway, lounge at the front with bay windows, dining room, kitchen and conservatory at the rear over

- FANTASTIC RENOVATION OPPORTUNITY- OPEN DAY SUNDAY 22ND OF FEBRUARY 2026
- LOUNGE
- KITCHEN
- FAMILY BATHROOM
- DRIVEWAY PARKING FOR TWO CARS
- THREE BEDROOM SEMI DETACHED FAMILY HOME IN CHAMBERLAYNE ROAD EASTLEIGH
- DINING ROOM
- CONSERVATORY
- LARGE REAR GARDEN
- NO FORWARD CHAIN



Riverbank House 65a Bishopstoke Road, Eastleigh, Hampshire, SO50 6BF

Tel: 07841976860 Email: [luci@lucimorganestateagency.com](mailto:luci@lucimorganestateagency.com) <https://www.lucimorganestateagency.com>