



Hardwick Street, EC1R

£799,950

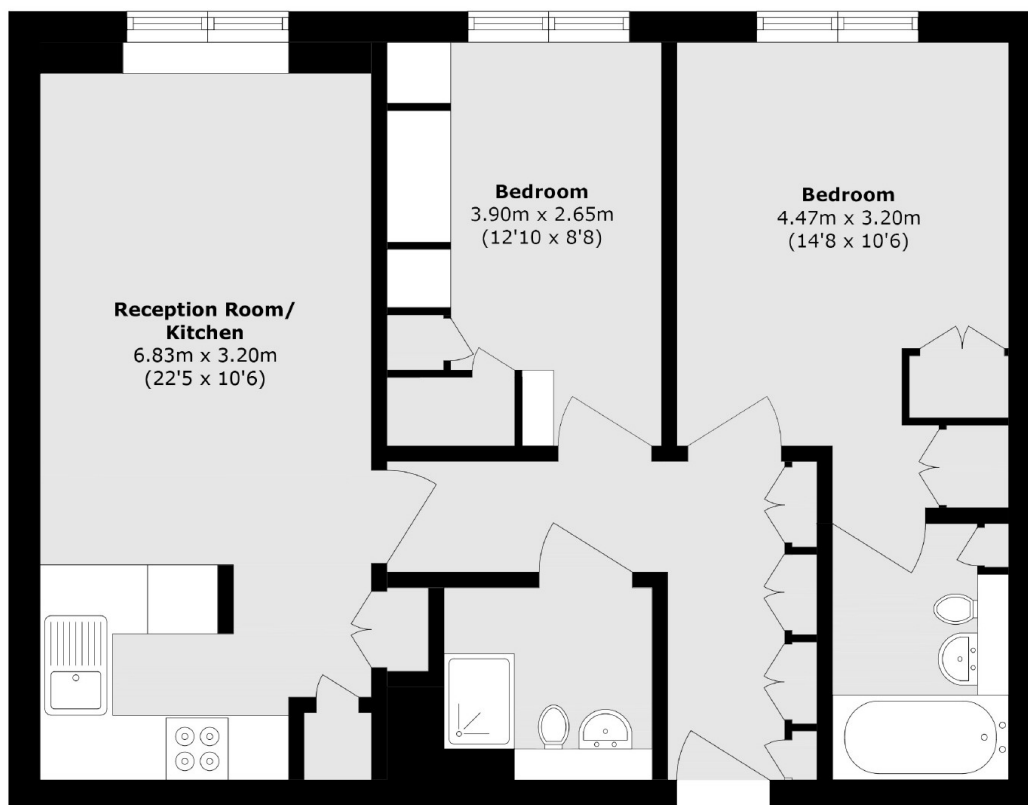
Set on the second floor of the sought-after Hydra Building, this beautifully presented two-bedroom, two-bathroom flat offers a peaceful retreat in the heart of central London. Featuring a spacious open-plan kitchen and living area with a Juliette balcony, the home is both stylish and functional. The generously sized bedrooms include a principal suite with en-suite, complemented by ample storage throughout.

Located in the heart of London's Clerkenwell neighbourhood, with Angel Station on the Northern Line just 0.3 miles away and the vibrant Exmouth Market with its bars and restaurants even closer. Additionally, both the City and West End are within easy reach.

Features

- Two Bedrooms
- Two Bathrooms
- Juliette Balcony
- Underfloor Heating
- Fitted Storage
- Centrally Located

Hardwick Street, London, EC1R



Total area (approx.): 66.6 sq. m (716.8 sq. ft)