



42 Guilford Avenue, Whitfield

Guide Price £289,995

DOMINIC MURPHY POWERED BY exp <sup>TM</sup> UK

@ dominic.murphy@exp.uk.com

🌐 dominicmurphy.exp.uk.com

📞 01304 746 016

## 42 Guilford Avenue, Whitfield

Situated in the ever-popular village of Whitfield, this well-presented three-bedroom end-of-terrace home, nestled at the end of a cul de sac, offers spacious and practical accommodation, making it an excellent choice for first-time buyers, growing families or those seeking a home close to a variety of amenities.

The ground floor boasts an open planned entrance hall with generous front sitting room enjoying plenty of natural light and provides a comfortable space to relax and entertain. There is handy downstairs Cloakroom/WC and to the rear is a stylish almost new kitchen fitted with contemporary units, ample worktop space and room for dining, creating a sociable hub for everyday living. To the rear, a useful conservatory extends the living accommodation further and offers direct access to the rear garden.

Upstairs, the property offers three well-proportioned bedrooms, all served by a stylish family bathroom. The bedrooms are bright and versatile, easily accommodating the needs of a growing family, home workers or visiting guests.

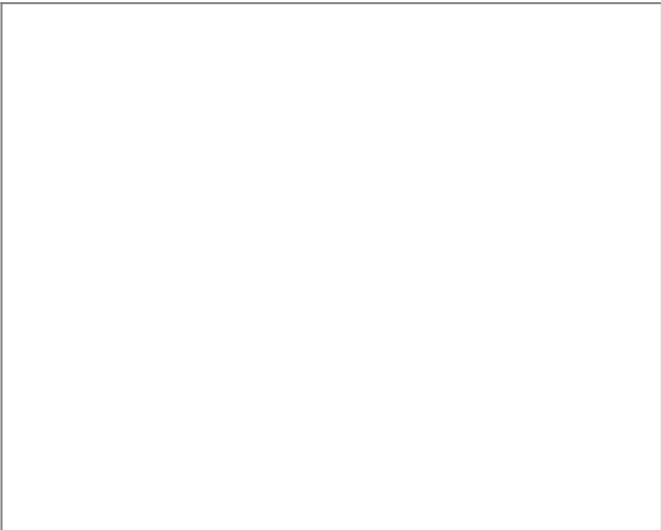
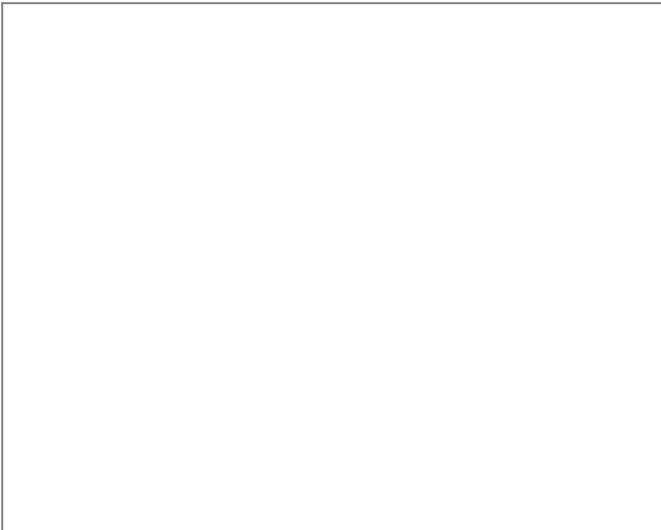
Externally, the home benefits from an enclosed rear garden, ideal for children and pets, together with lawned areas and space for outdoor seating. As an end-of-terrace property, it enjoys a greater sense of privacy than many neighbouring homes.

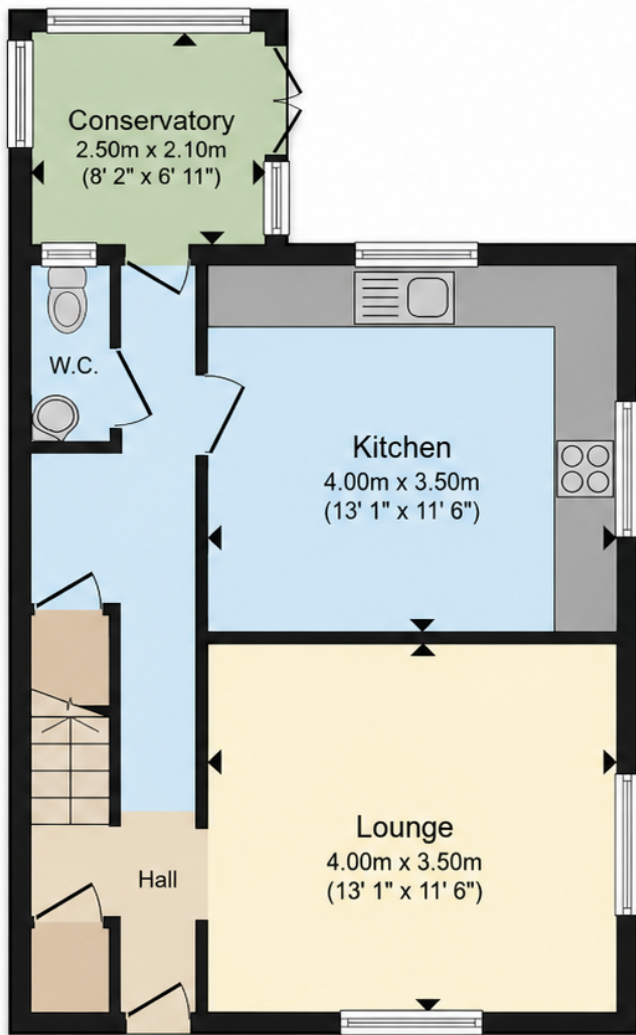
Whitfield remains one of Dover's most sought-after residential locations, offering excellent access to local schools, supermarkets, Dover town centre, the A2 and high-speed rail links to London.



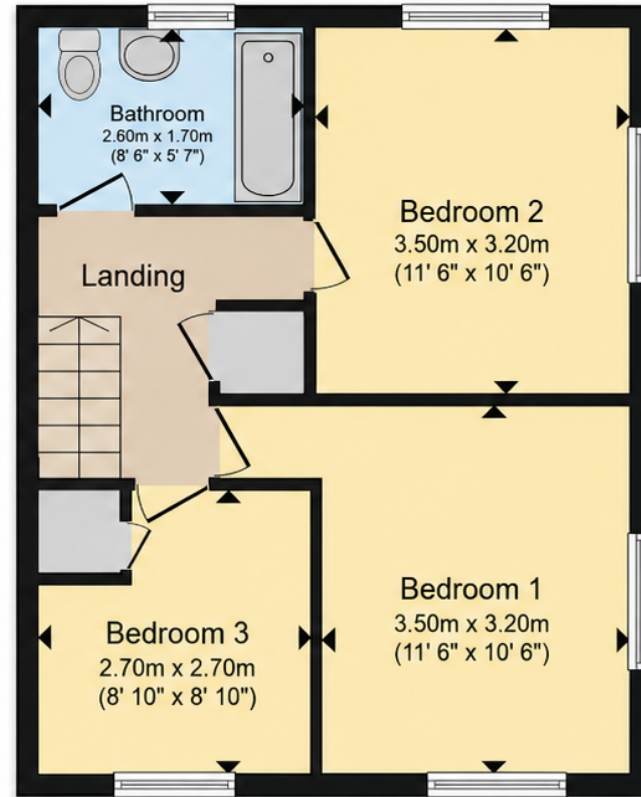








**Ground Floor**



**First Floor**