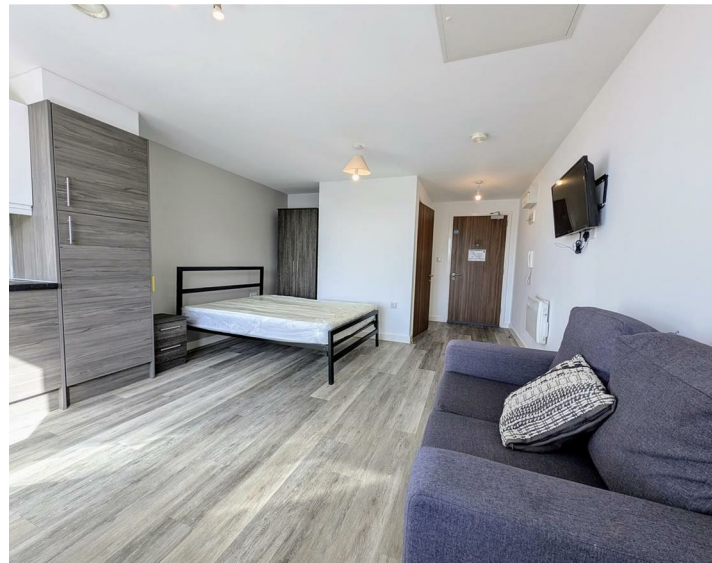


Apt 67 4 Leigh Street, Liverpool, L1 1NT
£695 Per Month

www.
cityresidential
.co.uk



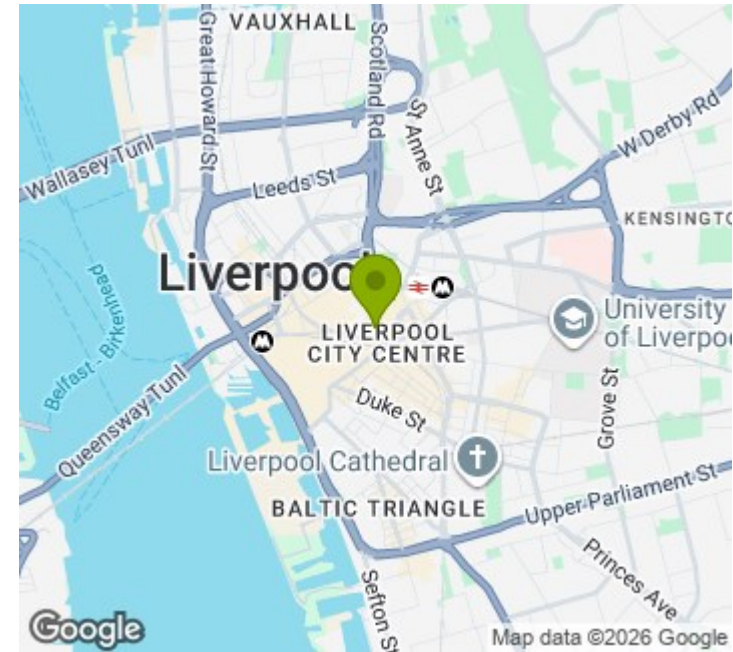
About the Property

Available to let is this well presented studio apartment in the heart of Liverpool City Centre.

Situated on Leigh Street, it is ideally located for all the amenities the city centre has to offer and is just a short walk from both Liverpool Central and Liverpool Lime Street Stations. The accommodation further benefits from double glazing, an intercom entry system and integrated white goods in the kitchen. This development is serviced by a lift to all floors.

Call us now to arrange a viewing on 0151 231 6100.

- Available Now!!
- Fully Furnished
- Central Location
- EPC Rating - C
- Council Tax Band - A
- Deposit - £801
- Head Lease Restriction - No pets



Energy Efficiency Rating

| | Current | Potential |
|---|-------------------------|-----------|
| Very energy efficient - lower running costs | | |
| (92 plus) A | | |
| (81-91) B | | |
| (69-80) C | 79 | 79 |
| (55-68) D | | |
| (39-54) E | | |
| (21-38) F | | |
| (1-20) G | | |
| Not energy efficient - higher running costs | | |
| England & Wales | EU Directive 2002/91/EC | |



City Residential

81/87 Victoria Street, The Old Haymarket, Liverpool L1 6DG

T: 0151 231 6100 F: 0151 231 6105

E: sales@cityresidential.co.uk



WWW.
cityresidential
.co.uk