



West Bradbury Yard, TW8

£461 Per week

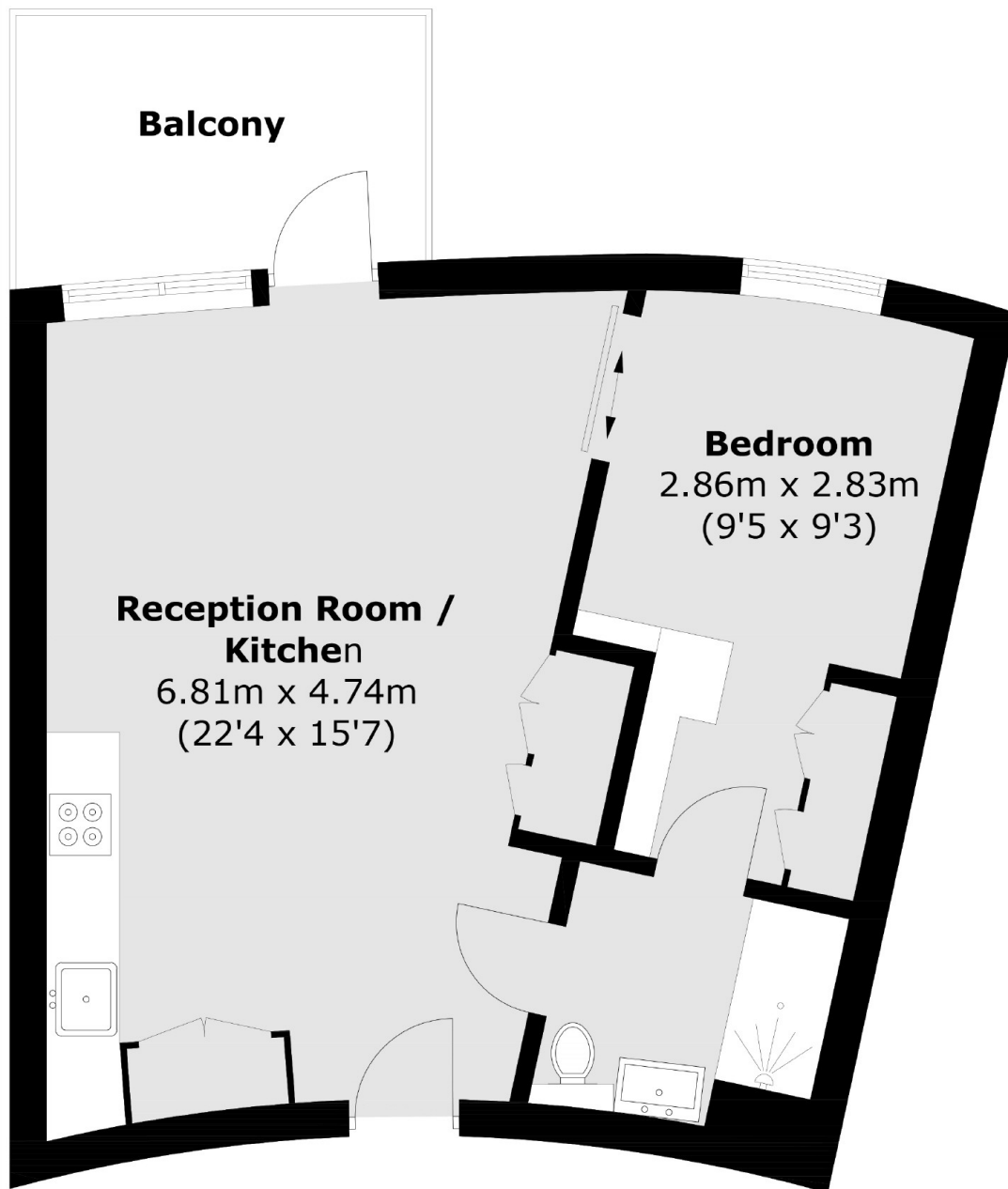
A modern and bright, brand-new, fully furnished one-bedroom apartment featuring an open-plan kitchen, private balcony, and a luxurious bathroom. The development offers 24/7 concierge service, a residents' lounge, gym, spa, and an open-air pool with stunning views, providing unique living experience.

This property is well-connected by public transport, with Brentford and Kew Bridge Railway Stations nearby, offering direct train services to central London. Gunnersbury Station, within walking distance, provides access to the District Line and Overground. The A4 is easily accessible, offering straightforward road links in and out of the city, with quick connections to the M4 motorway.

Features

- Brand New
- One Bedroom
- Furnished
- Private Balcony
- Gym
- Swimming Pool

West Bradbury Yard, Brentford, TW8



Total area (approx.): 46.2 sq. m (497.3 sq. ft)
Balcony: 7.1 sq. m (76.4 sq. ft)