



53, Ladycroft Close, Shrewsbury, SY3 6BB
£850 Per Month



53, Ladycroft Close, Shrewsbury, SY3 6BB

£850 Per Month

VIRTUAL TOUR AVAILABLE - Immaculate and recently renovated two bedroom terraced house occupying a quiet cul-de sac position in the popular residential area of Radbrook. Allowing convenient access to local amenities, the centre of Shrewsbury and the A5 Trunk Road.

Available: 18/06/26

Description

Comprising: Entrance hall with under-stairs storage, kitchen including electric oven and hob, integrated fridge freezer and washing machine, spacious living / dining room with glazed door to rear. Stairs to landing, Two double bedrooms - one with storage over the stairs, modern bathroom with rainfall shower over bath and heated towel radiator. Rear garden with patio. Double glazing. Gas central heating. Allocated parking. EPC C.



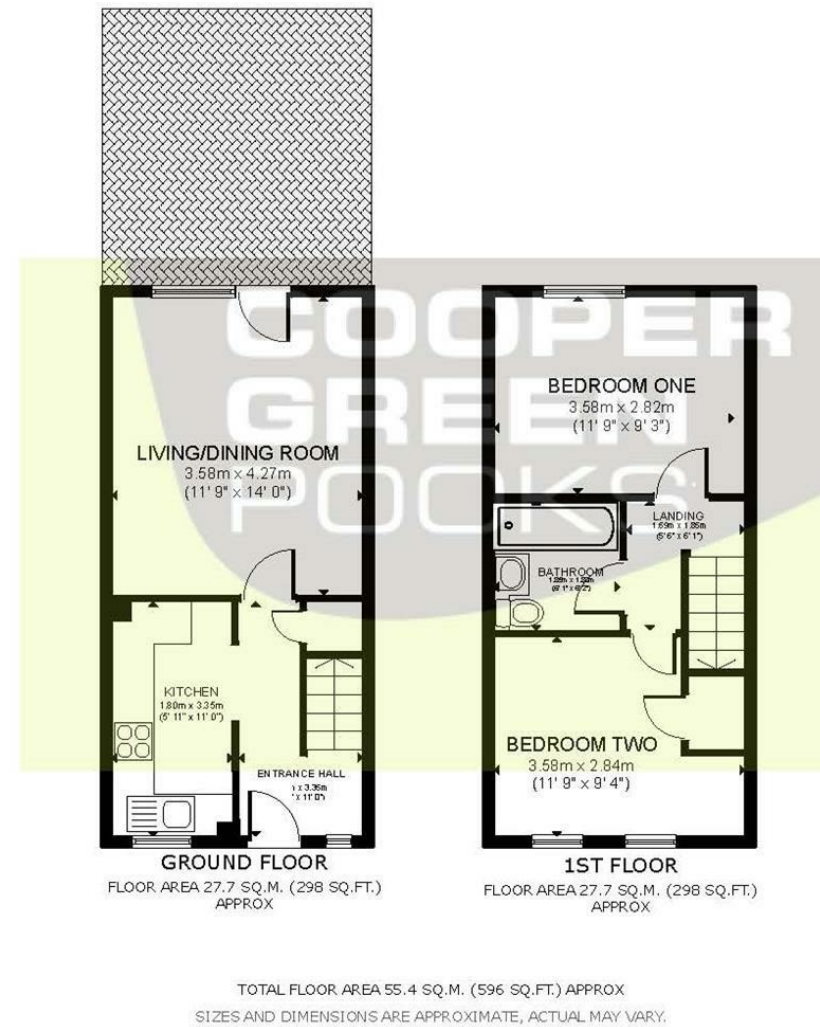
Unfurnished

Council Tax Band: B

Available: 18th June 2026

EPC: C

Floor Plans



These particulars, whilst believed to be accurate are set out as a general outline only for guidance and do not constitute any part of an offer or contract. Intending purchasers should not rely on them as statements of representation of fact, but must satisfy themselves by inspection or otherwise as to their accuracy. No person in this firm's employment has the authority to make or give any representation or warranty in respect of the property.