



Apartment 3, 14/15, High Street, Shrewsbury, SY1 1SP
£1,000 Per Month



Apartment 3, 14/15, High Street, Shrewsbury, SY1 1SP

£1,000 Per Month

VIRTUAL TOUR AVAILABLE - An individually designed two bedroom 2nd floor apartment of character occupying a fantastic position within the town centre, just off Shrewsbury High Street. The property is part of an exclusive courtyard development finished to a high standard while retaining many original features.

Available: 11/09/2026

Description

Comprising: Entrance hall, open plan living room with views over town centre and kitchen including electric hob, fridge freezer, dishwasher and washing machine, two double bedrooms, bathroom with shower over bath. Electric heating. Communal courtyard. EPC D.



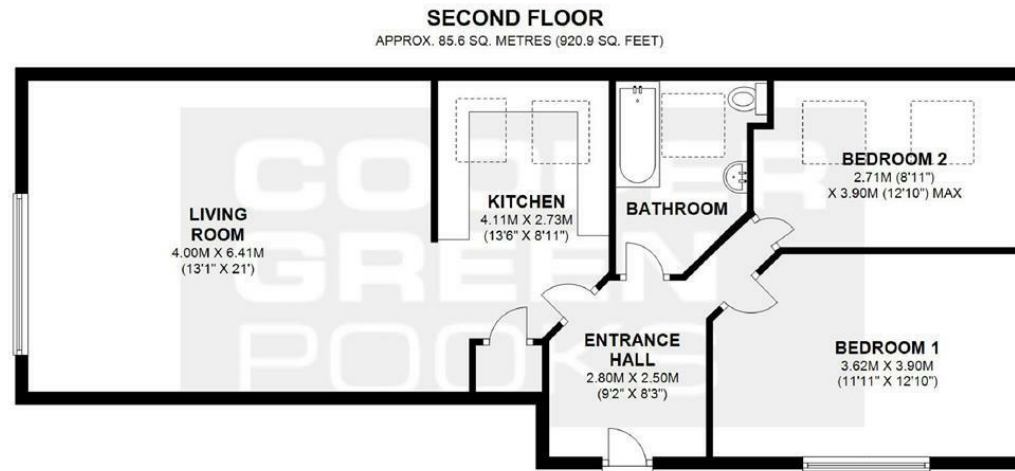
Unfurnished

Council Tax Band: C

Available: 11th September 2026

EPC: D

Floor Plans



TOTAL AREA: APPROX. 85.6 SQ. METRES (920.9 SQ. FEET)

We accept no responsibility for any mistake or inaccuracy contained within the floorplan. The floorplan is provided as a guide only and should be taken as an illustration only. The measurements, contents and positioning are approximations only and provided as a guidance tool and not an exact replication of the property.
Plan produced using PlanUp.

These particulars, whilst believed to be accurate are set out as a general outline only for guidance and do not constitute any part of an offer or contract. Intending purchasers should not rely on them as statements of representation of fact, but must satisfy themselves by inspection or otherwise as to their accuracy. No person in this firm's employment has the authority to make or give any representation or warranty in respect of the property.