



SCOTT WINDLE POWERED BY exp TM UK

@ scott.windle@exp.uk.com

scottwindle.exp.uk.com

07838 311 550

The Green, Biddestone

Guide Price £525,000

🛏️ 2 🚿 1 🚗 2



Willow Cottage is a delightful Grade II Listed two double bedroom cottage, enviably positioned in the heart of the highly sought after and picturesque village of Biddestone overlooking the village green and within easy reach of the village pond.

Beautifully presented throughout, this charming home effortlessly blends period character with tasteful modern updates, creating a warm and inviting living space perfectly suited to modern day life. The light filled accommodation comprises a large welcoming entrance hall, a well appointed kitchen with a range of wall and base units, integrated oven and hob, and direct access to the rear garden. The sitting room features an attractive fireplace with a wood burning stove, providing a wonderful focal point.

Upstairs are two generous double bedrooms, including a master bedroom with an abundance of built in wardrobes and storage. A stylish shower room completes the accommodation.

Outside, the pretty rear garden has been thoughtfully designed for easy maintenance and enjoys a variety of established trees and shrubs, along with a useful garden store.

Willow Cottage is full of charm and character and offers a rare opportunity to enjoy village living in a beautiful period home. Bright, welcoming and full of natural light, this is a home that is ready to move straight into and enjoy and an internal viewing is highly recommended. No onward chain.

Property Information

Freehold

Council Tax Band; E

Gas Fired Central Heating

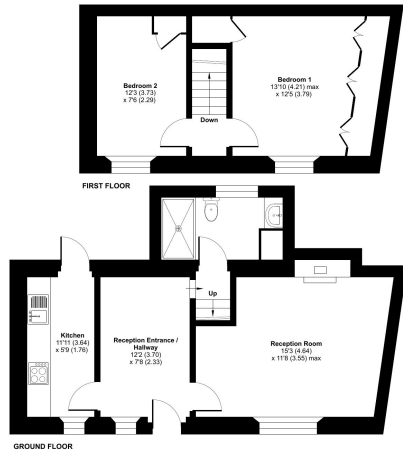
Grade II Listed; EPC exempt

No Onward Chain



Willow Cottage, The Green, Biddestone, Chippenham, SN14

Approximate Area = 726 sq ft / 67.4 sq m
For identification only - Not to scale



These plans produced in accordance with RICS Property Measurement Standards (complying with International Property Measurement Standards (IPMS) (November 2018)). © Robinson 2024. Produced by our Agent (01249 802 140000)

- Please Quote Reference SW0341
- Grade II Listed
- Charming Period Cottage Over Looking The Village Green
- Sought After Village Location
- Beautifully Presented
- Two Double Bedrooms
- Sitting Room With Wood Burner
- Large, Welcoming Entrance Hallway
- Pretty, Easily Maintainable Garden
- No Onward Chain



eXp World UK Ltd is a registered company at Level 37, 25 Canada Square, London, E14 5LQ.

Registered company number is 12016573. VAT Registration Number is 327 4120 29