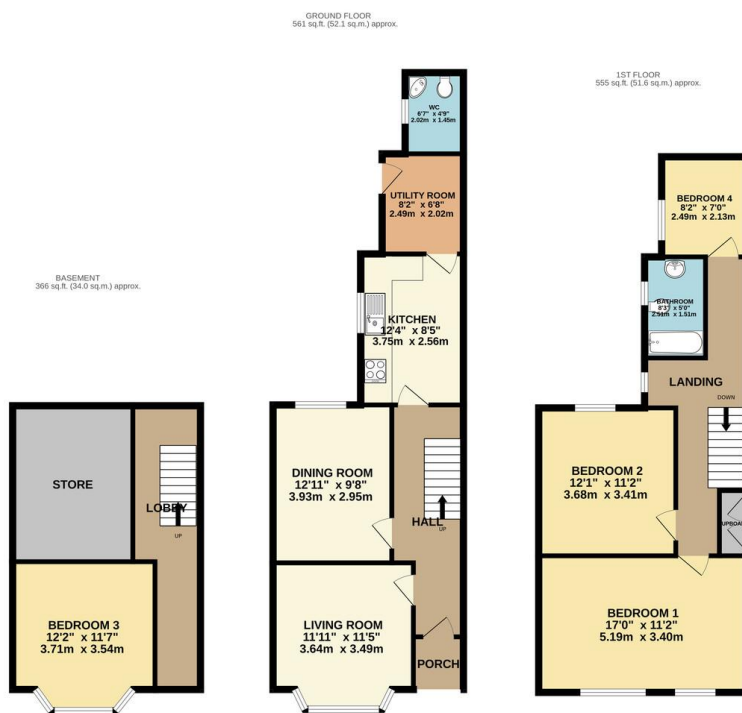




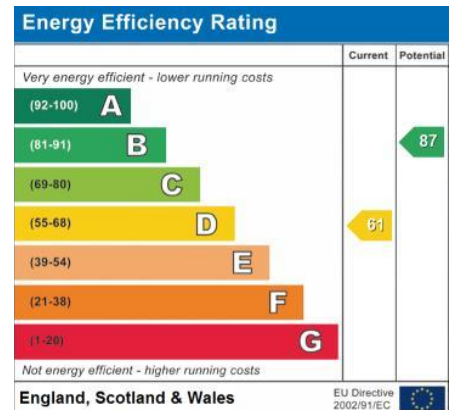
## FOR SALE

4 Bed Town House in Daneshill Road, West End LE3 6AN  
£260,000

A charming Victorian townhouse situated within the heart of Leicester's West End — offered to the market chain free and retaining character features throughout. This spacious home offers flexible accommodation across multiple levels, including the added benefit of a versatile basement floor providing potential for further bedrooms, workspace, or additional living accommodation. Conveniently positioned close to local amenities, popular bars, restaurants, and Leicester City Centre, this is a fantastic opportunity to acquire a characterful home in a sought-after location.



TOTAL FLOOR AREA: 1482 sq.ft. (137.6 sq.m.) approx.  
Whilst every attempt has been made to ensure the accuracy of the floorplan contained here, measurements of doors, windows, rooms and any other items are approximate and no responsibility is taken for any error, omission or mis-statement. This plan is for illustrative purposes only and should be used as such by any prospective purchaser. The services, systems and appliances shown have not been tested and no guarantee as to their operability or efficiency can be given.  
Made with Metropac (02026)



- Chain Free
- Sought-After West End Location
- Character Features Throughout
- Flexible Accommodation Over Multiple Floors
- Useful Basement Level With Potential Bedrooms
- Well-Proportioned Bedrooms
- Spacious Lounge

**Agents Note:** Whilst every care has been taken to prepare these sales particulars, they are for guidance purposes only. All measurements are approximate and for general guidance purposes only and whilst every care has been taken to ensure their accuracy, they should not be relied upon and potential buyers are advised to recheck the measurements.

