



Hawthorne Place, Epsom

Guide Price **£425,000**



Hawthorne Place

Epsom

Delightful 2-bed mid-terrace house with south-east facing rear garden, parking, and modern interior. Convenient location near town centre and transport links. Ideal for first-time buyers or investors.

Council Tax band: D

Tenure: Freehold

EPC Energy Efficiency Rating: C

EPC Environmental Impact Rating: G

- Mid Terrace House
- Popular Location
- Two Bedrooms
- Living Room
- Kitchen
- Bathroom
- South East Facing Rear Garden
- Driveway
- Close To Town Centre & Station



Nestled within a sought-after location on the edge of Epsom town centre, this beautifully presented 2-bedroom mid-terrace house presents an ideal opportunity for first-time buyers or investors alike. The property boasts a well-designed layout, featuring a welcoming living room with wood flooring and a well designed kitchen. On the first floor are two generously sized bedrooms and a modern bathroom.

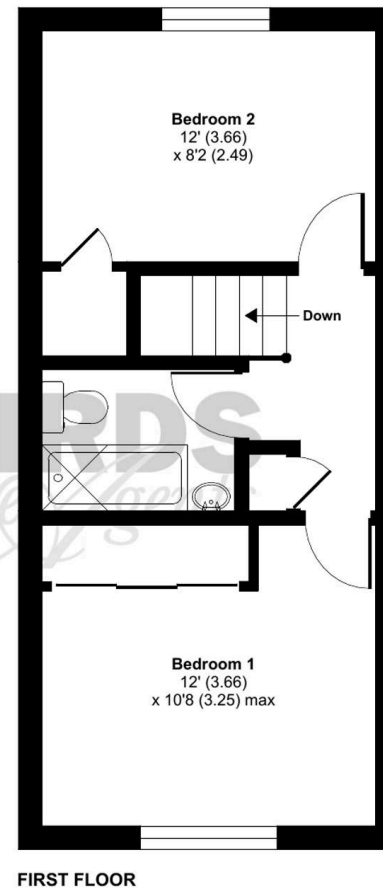
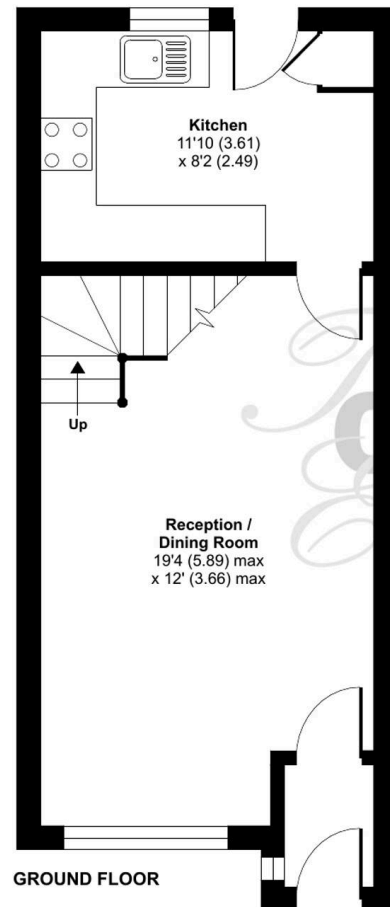
Step outside to discover the private paved South East facing rear garden, ideal for enjoying al fresco dining or entertaining guests, with shed and rear access. The property also benefits from a driveway at the front providing parking for one vehicle.

Situated in a prime location, this residence offers easy access to the town centre and the station, providing excellent transport links and a plethora of amenities right at your doorstep. Don't miss out on this fantastic opportunity to make this property your own and enjoy a convenient lifestyle in a desirable location.

Hawthorne Place, KT17

Approximate Area = 673 sq ft / 62.5 sq m

For identification only - Not to scale







Cairds The Estate Agents

Cairds The Estate Agents, 128-130 High Street - KT19 8BT

01372 743033 • homes@cairds.co.uk • www.cairds.co.uk