



Ground Floor Flat

Two Bedrooms

Large Modern  
Bathroom

Residents Parking

Surrounded by Green  
Space

Transport Links



Oliver  
& Akers

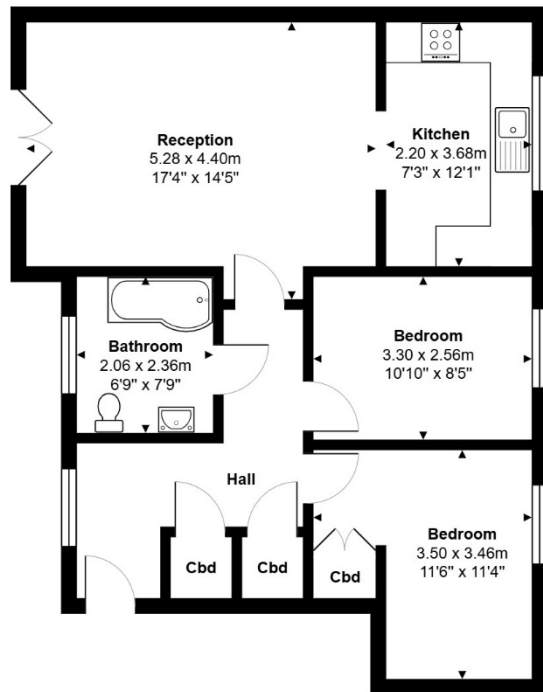
01727 580085

1 Lime Tree Court, Napsbury Park, St. Albans, AL2 1UL

£340,000

[www.oliverandakers.com](http://www.oliverandakers.com)

This TWO-BEDROOM, GROUND FLOOR APARTMENT is situated in the stunning Napsbury Park! Surrounded by acres of green space and with GREAT ROAD AND TRANSPORT LINKS, this is a great first time buy!



Total Area: 62.4 m<sup>2</sup> ... 672 ft<sup>2</sup>  
 All measurements are approximate and for display purposes only



Energy Efficiency Rating		Current	Potential
Very energy efficient - lower running costs			
(92-100)	<b>A</b>		
(81-91)	<b>B</b>		
(69-80)	<b>C</b>	75	77
(55-68)	<b>D</b>		
(39-54)	<b>E</b>		
(21-38)	<b>F</b>		
(1-20)	<b>G</b>		
Not energy efficient - higher running costs			
England, Scotland & Wales			EU Directive 2002/91/EC



**Oliver & Akers**

01727 580085

[www.oliverandakers.com](http://www.oliverandakers.com)

1 Lime Tree Court, Napsbury Park, St. Albans, AL2 1UL

£340,000