



**Applegarth Road**  
W14



# Applegarth Road

**RAISED GROUND FLOOR FLAT**

**1 BEDROOM**

**SPACIOUS RECEPTION**

**SEPARATE KITCHEN**

**CONTEMPORARY SHOWER ROOM**

**PRIME BROOK GREEN LOCATION**

**COUNCIL TAX BAND D**

**EPC RATING C**

**AVAILABLE 7TH AUGUST**

---

Excellent ground floor 1 bedroom flat on a quiet road close to the Green with, light reception, separate kitchen and contemporary shower room. Ideal for all the transport links at Hammersmith, Olympia and Shepherds Bush. Unfurnished. Available 7th August.



---

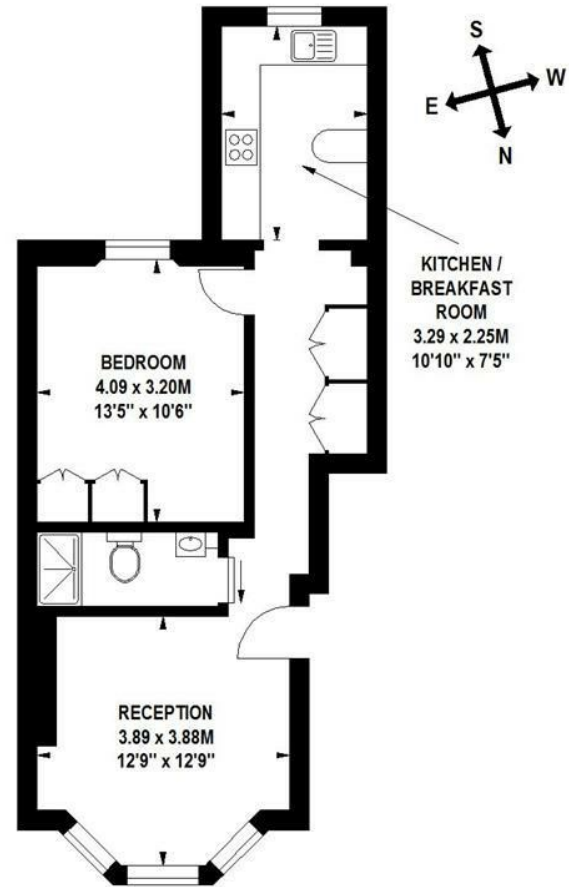
**£2,000 PER MONTH**

**SUBJECT TO CONTRACT**



## Applegarth Road, W14

Approximate Gross Internal Area 47 sq m / 506 sq ft



### Raised Ground Floor

Floor Plan produced for Finlay Brewer by Mays Floorplans © . Tel 020 3397 4594  
Illustration for identification purposes only, not to scale  
All measurements are maximum, and include wardrobes and window bays where applicable