



**Flat 18, Park House**  
**Market Harborough**

Guide Price  
**£400,000**





**Bedrooms: 3**

**Bathrooms: 2**

**Receptions: 2**

Set within the highly regarded and historic Park House, this exceptional three bedroom period home offers a rare opportunity to own a beautifully restored residence just a stone's throw from the town centre.

Park House boasts a rich and fascinating history, originally owned by the Symington family, renowned for manufacturing whalebone corsets within the town. During the Second World War, the building served as an Officers' Mess, following the war, it reverted to council offices before being thoughtfully converted into residential accommodation in 1986. Today, Park House comprises just 21 apartments, making this a particularly exclusive offering.



The property itself has been finished to an exceptional standard, with quality evident at every turn while carefully preserving its period charm. At the heart of the home is a stunning kitchen dining area, featuring impressive high ceilings, a central island and beautifully crafted cabinetry, creating a space that is both striking and highly functional. Complementing this are a stylish utility room, boot room and guest WC, all finished to the same impeccable standard.





**Bedrooms: 3**

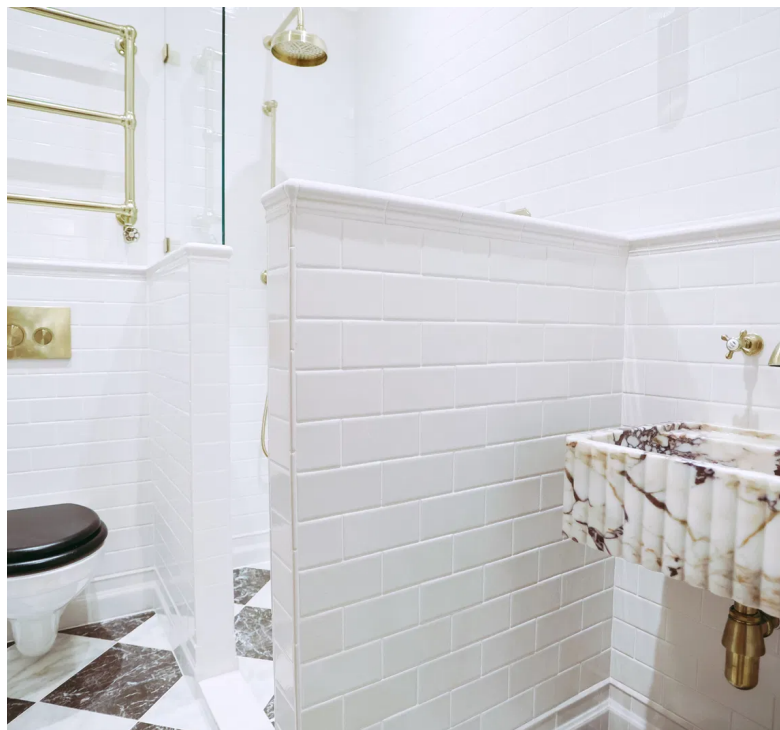
**Bathrooms: 2**

**Receptions: 2**

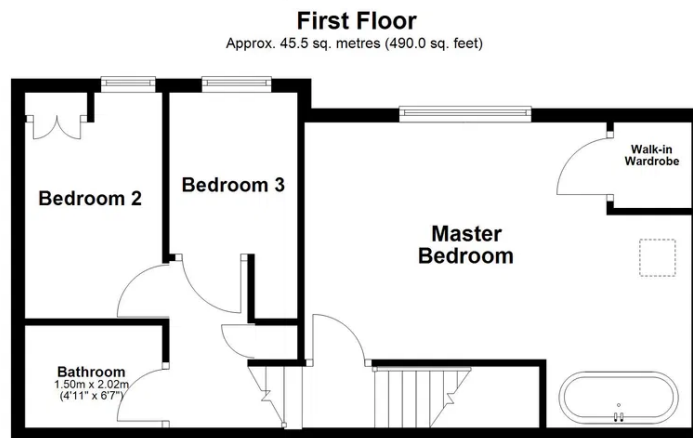
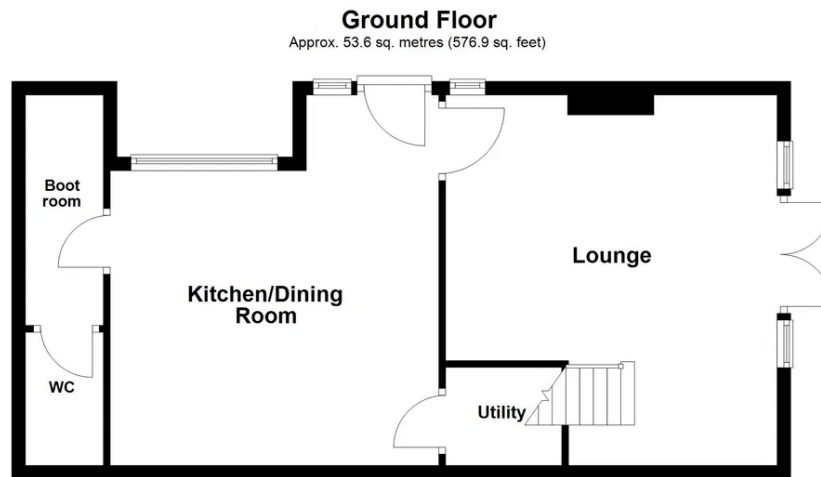
A separate, generously proportioned lounge provides a beautifully light space, showcasing superb ceiling height, attractive ceiling rose, detailed cornicing and bespoke cabinetry. From here, there is access to the south facing courtyard garden, as well as stairs leading to the first floor.

The principal bedroom has been thoughtfully designed to create a truly luxurious space, offering ample room, built in storage, a discreet hidden media unit and a stunning stone bath, cleverly positioned around the corner to add a sense of grandeur and indulgence. Two further single bedrooms are served by a beautifully appointed family shower room, finished to an immaculate standard with underfloor heating, a marble sink and stunning tiling.

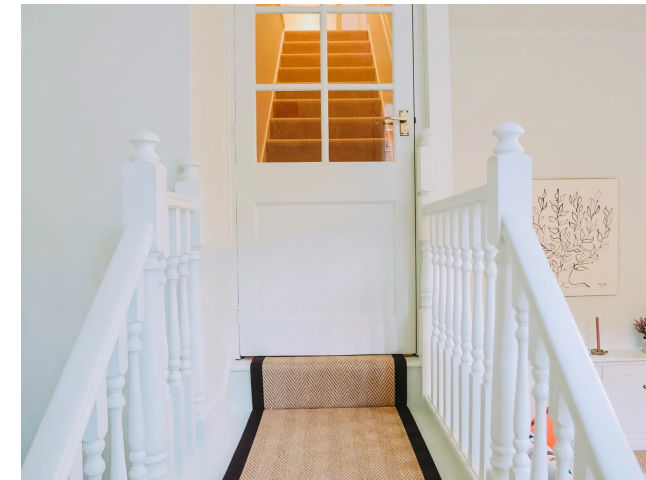
Externally, the property benefits from a garage and off road parking, a rare and valuable addition so close to the town centre. Combining rich history, refined period features and high end modern finishes, this outstanding home offers a unique and elegant lifestyle in one of the area's most established and sought after settings.







Total area: approx. 99.1 sq. metres (1066.9 sq. feet)







**Danielle Nutley Property**

**07837 027 235**

[danielle@nutleyproperty.co.uk](mailto:danielle@nutleyproperty.co.uk)

<https://daniellenutleyproperty.co.uk/>