



PETER AVENUE, NW10

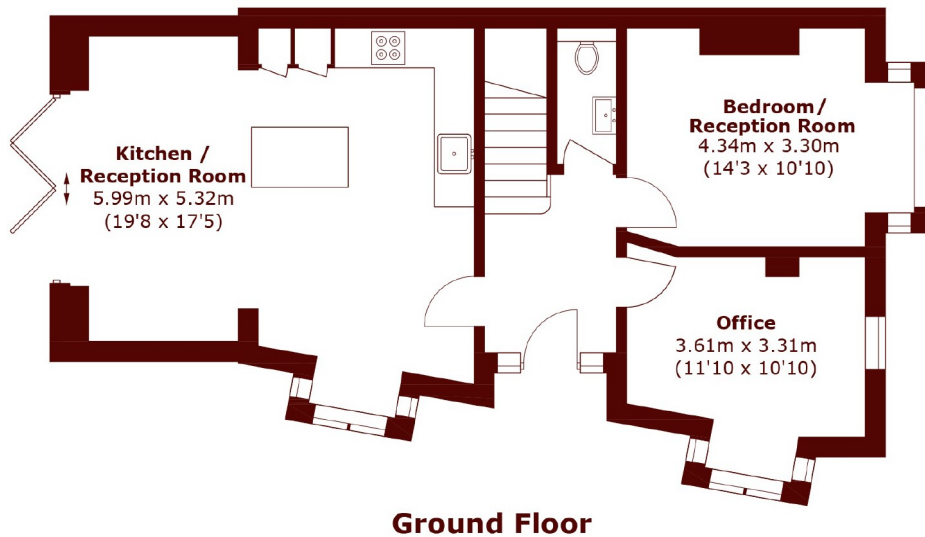
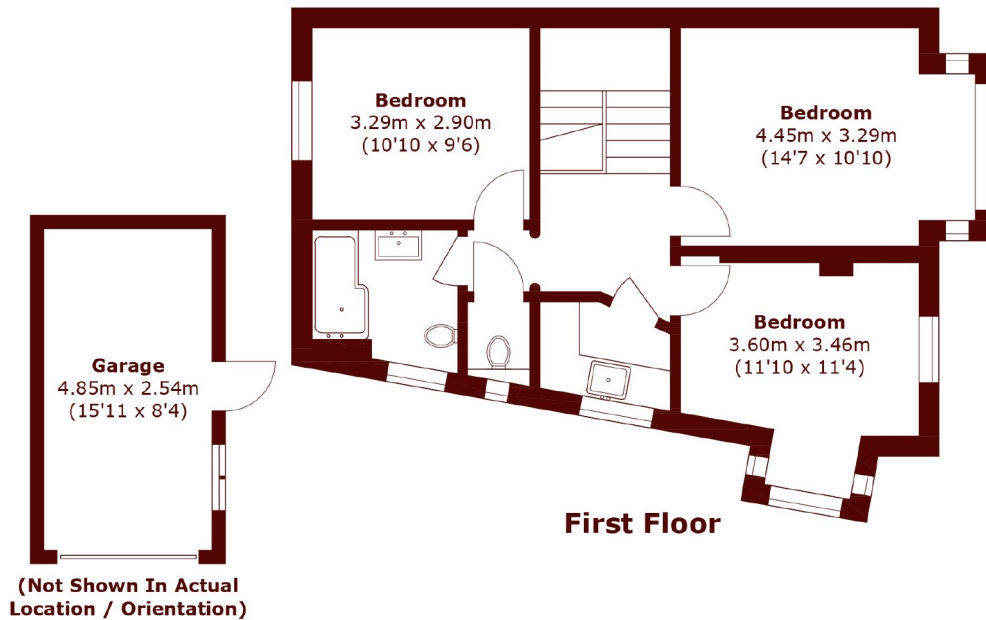
£900,000

This unique, three/four-bedroom semi-detached house is arranged over 1,300sqft, comprising an open plan kitchen/living area with bifold doors leading out to a decked garden, a separate reception or downstairs

Three/Four Bedrooms
Newly Refurbished
Off Street Parking

Garage
Semi Detached
Great Location

STEP INSIDE PETER AVENUE



Total area (approx.): 120.8 sq. m (1,300.3 sq. ft)
Garage: 12.3 sq. m (132.4 sq. ft)

Willesden Green
020 8451 0420

Energy Rating: E We aim to make our particulars both accurate and reliable. However, they are not guaranteed; nor do they form part of an offer or contract. If you require clarification on any points then please contact us, especially if you're traveling some distance to view. Please note that appliances and heating systems have not been tested and therefore no warranties can be given as to their good working order

MARSH &
PARSONS