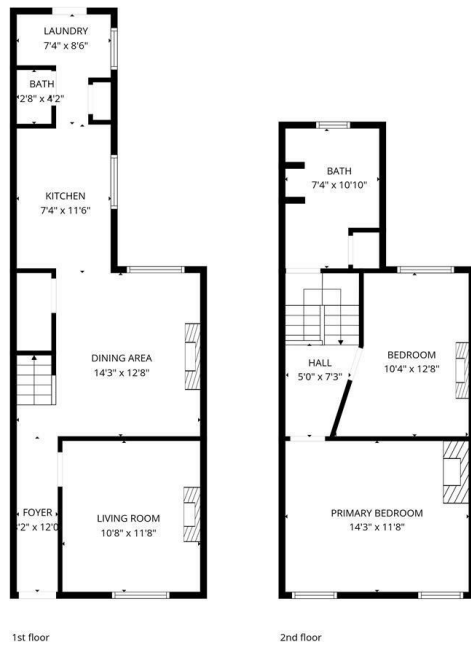


45 Clapham Terrace, Leamington Spa
Offers Over £375,000

charlesrose.



TOTAL: 930 sq. ft
1st floor: 497 sq. ft, 2nd floor: 433 sq. ft
EXCLUDED AREAS: WALLS: 111 sq. ft

Measurements are calculated accurately but are not guaranteed.



A beautifully styled Victorian townhouse on sought-after Clapham Terrace, combining period character with thoughtful modern updates. Featuring impressively high ceilings, large sash windows, two double bedrooms, a thoughtfully updated kitchen and a private courtyard garden, all within easy reach of Leamington Spa town centre and the train station.

charlesrose.

- 01926 832411
- hello@charlesrose.co.uk
- charlesrose.co.uk

