



Apart 12 Kensington Place Imperial Terrace, Onchan, Isle of Man, IM3 1HL  
Asking Price £999,000

- Exquisitely Appointed, Impeccably Presented, Penthouse Apartment Exceptional Spacious Accommodation.
  - Cloakroom. Private Store to Landing
- Security, Fire & Sprinkler Systems. Lift Serving All Floors
- 3 Bedrooms – Master Suite with En-Suite Shower Room. Luxurious Bathroom .
  - 2 Secure Allocated Underground Parking Spaces
  - Faultless Decorative Order Throughout
- 34ft Double Aspect Sea-Facing Living Room/Dining Room with Twin Balconies. Study Lavishly Appointed Kitchen/Breakfast Room ;Utility/Boiler Room
  - 44ft Secure Private Storeroom
  - Panoramic Sea Views



This exquisitely appointed penthouse apartment is impeccably presented and offers exceptional, spacious accommodation with breathtaking panoramic sea views. Finished to the highest standard throughout, the property combines elegant design, generous proportions, and refined detailing to create a truly luxurious coastal home.

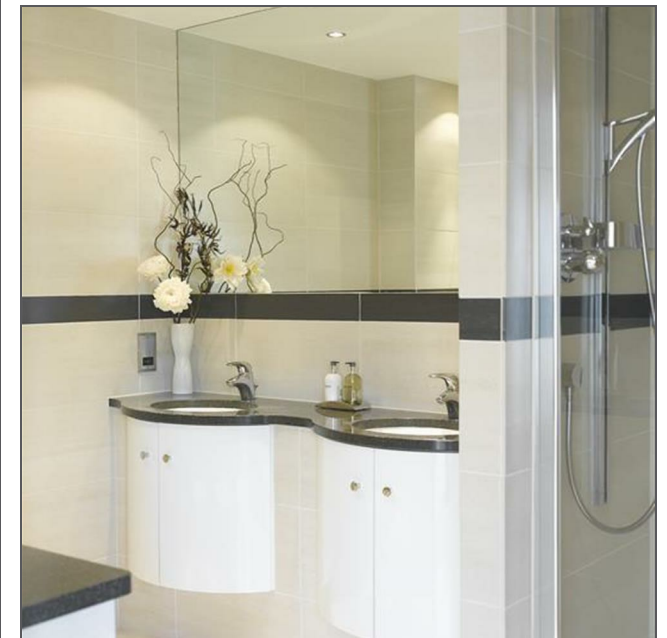
The centrepiece of the apartment is the impressive 34-foot double-aspect living and dining room, flooded with natural light and enjoying uninterrupted sea views. Twin sea-facing balconies extend this magnificent space outdoors, ideal for entertaining or simply relaxing while taking in the coastal outlook. A separate study provides a quiet and versatile space, perfectly suited for home working or private use.

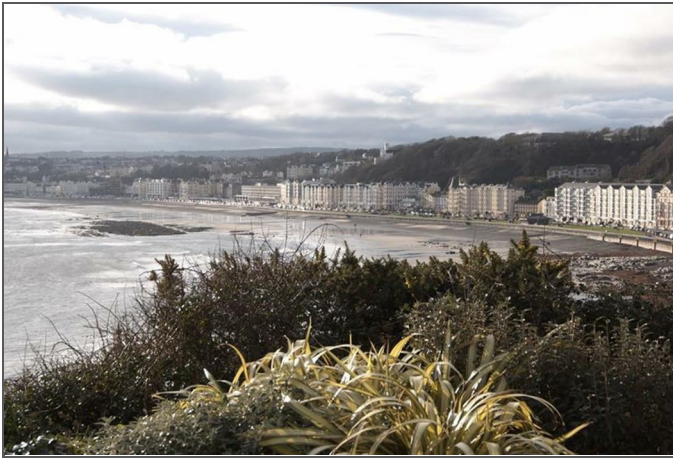
The lavish kitchen and breakfast room is both stylish and functional, fitted with high-quality finishes and complemented by a separate utility and boiler room. Walnut internal doors, downlighters to the principal rooms, and detailed cornices, skirting, and architraves reflect the meticulous attention to detail throughout the apartment.

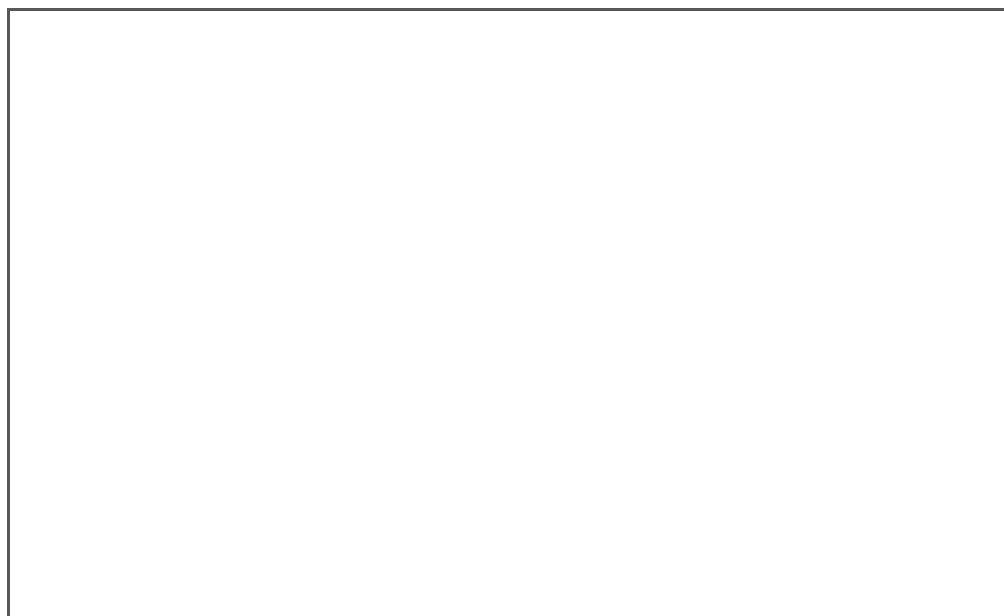
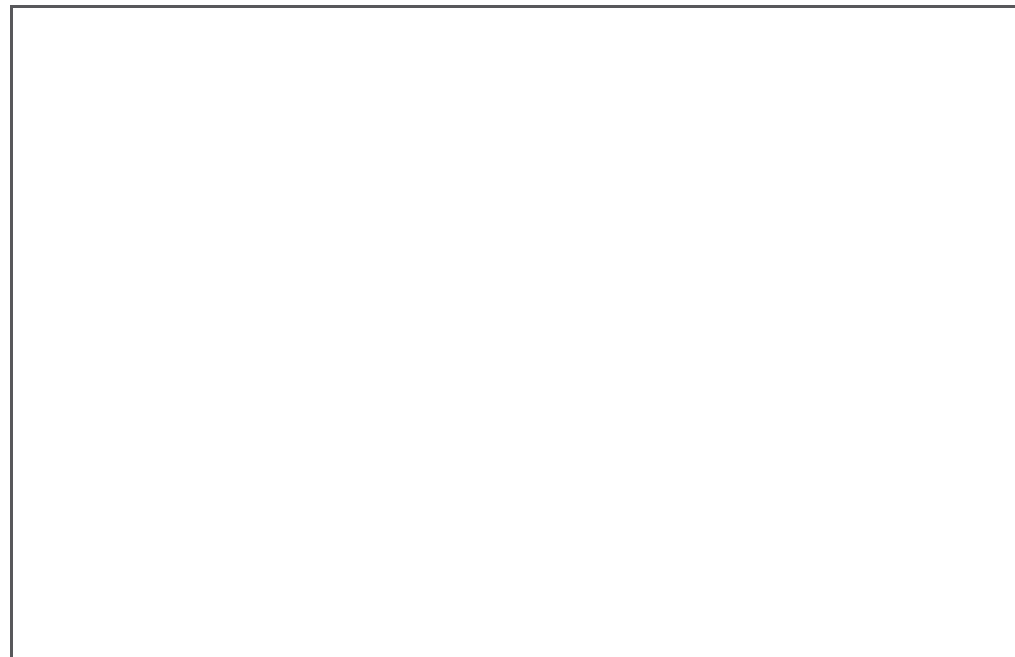
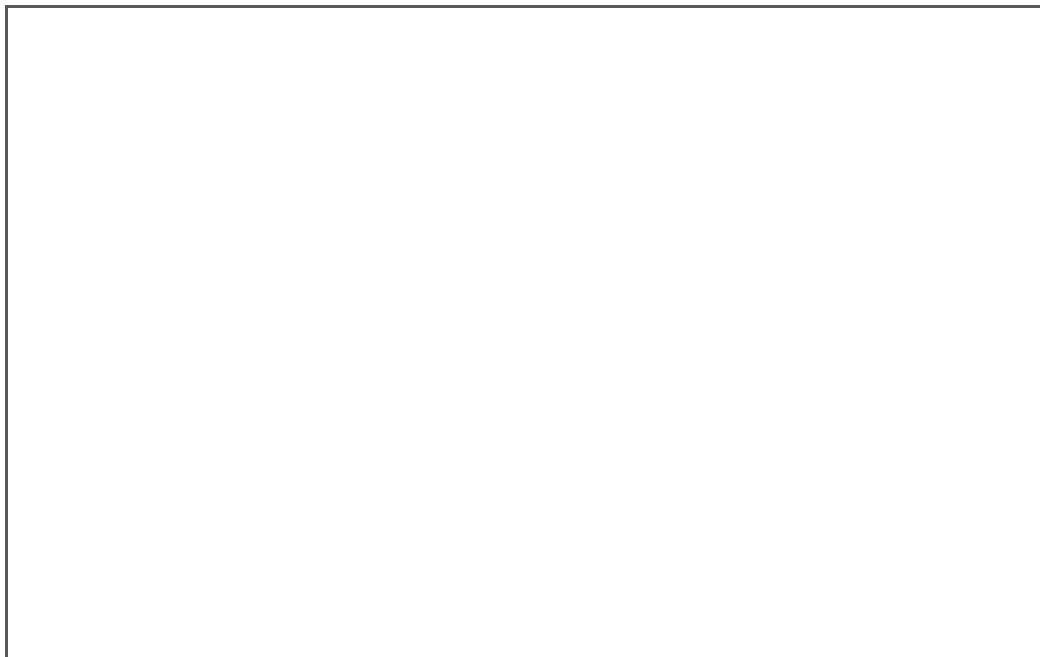
There are three well-proportioned bedrooms, including a superb master suite with an en-suite shower room. The luxurious main bathroom features premium Hansgrohe fittings, while a separate cloakroom adds further convenience.

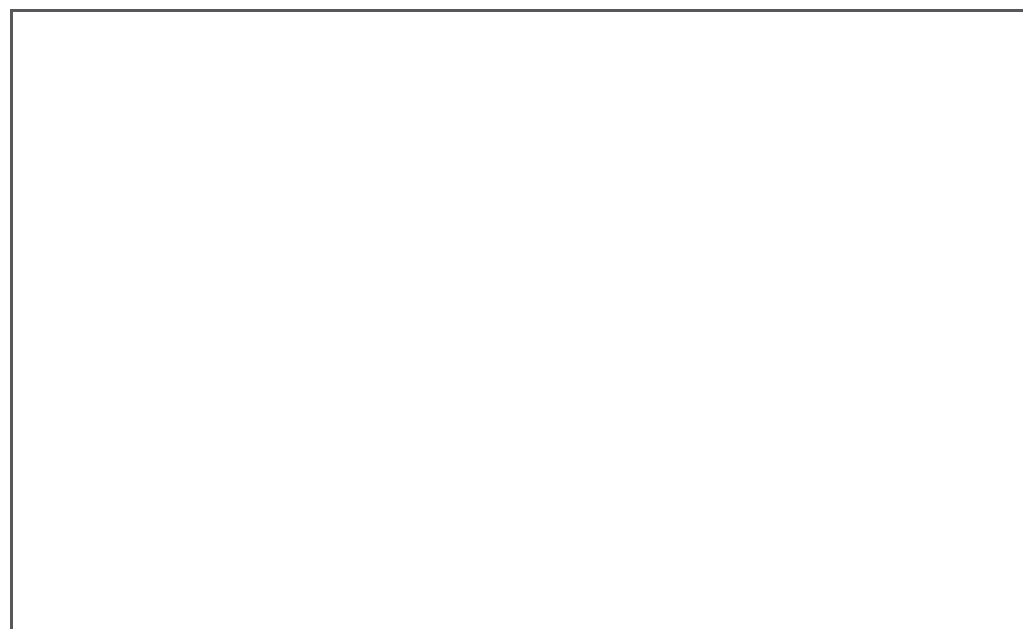
Additional features include a private store on the landing and an impressive 44-foot secure private storeroom. Marble-floored communal areas create a striking sense of arrival, with a lift serving all floors. The apartment benefits from underfloor electric heating, chrome door furniture, switch plates and sockets, and integrated security, fire, and sprinkler systems. Two secure allocated underground parking spaces complete this outstanding home, which is maintained in faultless decorative order throughout.









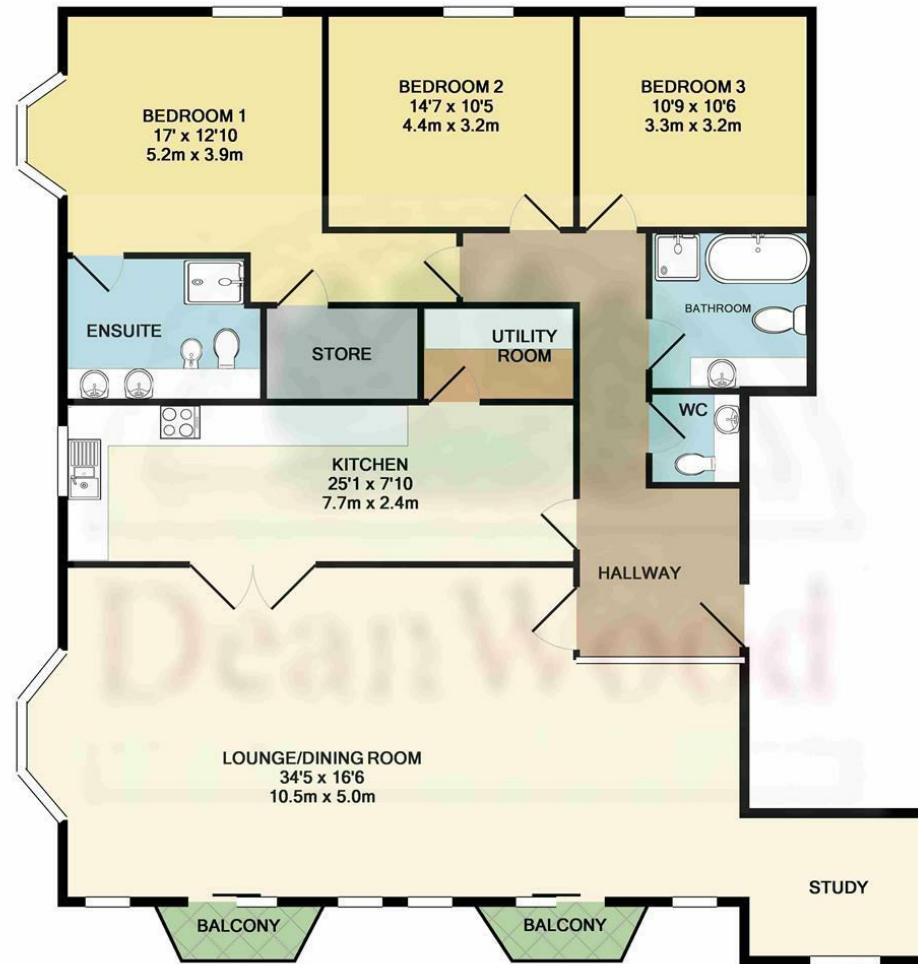




Apart 12 Kensington Place Imperial Terrace, Onchan, Isle of Man, IM3 1HL

---





Not to scale-for identification purposes only  
Made with Metropix ©2015

**DOUGLAS**

37 VICTORIA STREET  
DOUGLAS  
ISLE OF MAN IM1 2LF

**T** 01624 620606

**F** 01624 677363

**E** info@deanwood.co.im

**CASTLETOWN**

COMPTON HOUSE  
9 CASTLE STREET CASTLETOWN  
ISLE OF MAN IM9 1LF

**T** 01624 825995

**F** 01624 825996

**E** castletown@deanwood.co.im

**RAMSEY**

LEZAYRE HOUSE  
87 PARLIAMENT STREET  
RAMSEY ISLE OF MAN IM8 1AQ

**T** 01624 816111

**F** 01624 816588

**E** ramsey@deanwood.co.im

These particulars are for information purposes only. They do not constitute or form any contract nor should any statement contained herein be relied upon as a representation of fact. Neither the vendor nor DeanWood Agencies Limited ('the firm'), nor any officer or employee of the firm accept liability or responsibility for any statement contained herein. The vendor does not by these particulars, nor does the firm, nor does any officer or any employee of the firm have any authority to make or give any representation or warranty whatsoever as regards the property or otherwise. It is the sole responsibility of any person interested in the property described in these particulars to make all proper enquiries and searches to verify the description of the property and all other particulars herein.

FOR MORE PROPERTIES VISIT OUR WEBSITE @ [deanwood.im](http://deanwood.im)