



Burnham Way, W13

£475,000

A spacious split level flat offering two double bedrooms and two bathrooms (one of which is en-suite) attractively offered onto the market with a new lease, off street parking and no onward chain.

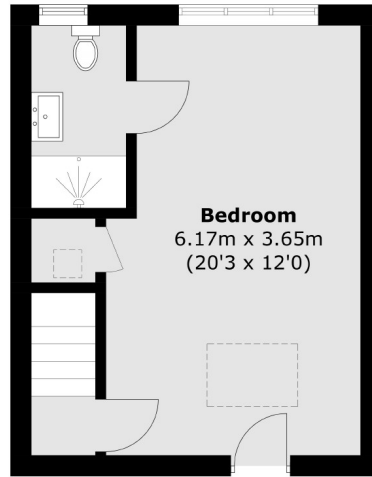


Offering over 750 sq ft, this beautiful split level flat offers a large kitchen/diner, family bathroom and double bedroom on the first floor. The loft has been tastefully converted to include the principal bedroom with an en-suite shower-room.

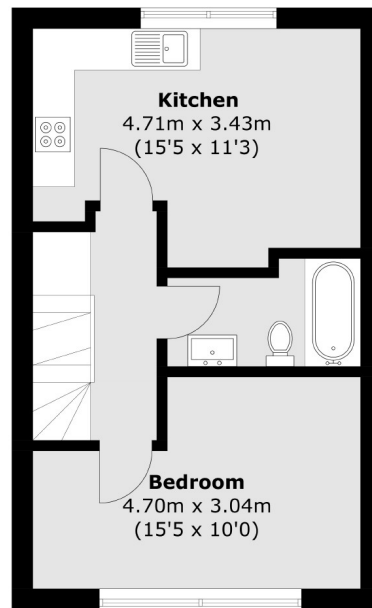
Ideally located for Fielding & Elthorne schools (both Ofsted outstanding). Local parks to enjoy include Lammas, Walpole & Elthorne. An array of shops & restaurants on Northfields Avenue to enjoy.

- Two Double Bedrooms • No Onward Chain • New Lease •
 - Off-Street Parking • Ofsted Outstanding Schools • Local Parks •
-

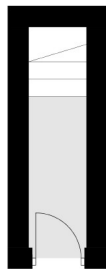




Second Floor



First Floor



Ground Floor

Total area (approx.): 69.7 sq. m (750.3 sq. ft)

Robertson Smith & Kempson Northfields Sales
116 Northfield Avenue,
London, W13 9RT
020 8566 2340
northfieldssales@robertsonsmithandkempson.co.uk

Energy Rating: C. We aim to make our particulars both accurate and reliable. However they are not guaranteed; nor do they form part of an offer or contract. If you require clarification on any points then please contact us, especially if you're traveling some distance to view. Please note that appliances and heating systems have not been tested and therefore no warranties can be given as to their good working order.