



**Connells**

The Oak Oakfield  
Swindon



## Property Description

EX SHOWHOME PLOT - AVAILABLE TO RESERVE NOW!

Discover the perfect blend of modern luxury and everyday comfort in this beautifully appointed home, set within a highly sought-after development crafted by Nationwide's award-winning architects and designers. From the moment you step through the door, you're greeted with a sense of elegance, space, and high-end finishes that set this property apart. The ground floor opens with a welcoming entrance hall, flowing seamlessly into bright, stylish living spaces designed for both relaxation and entertaining. Upstairs, you'll find two generously proportioned bedrooms—each a serene retreat—and a beautifully finished family bathroom with contemporary fittings and a calming aesthetic. This home is not just about interiors—it's about lifestyle. Step outside into your own private, enclosed rear garden, ideal for summer evenings, alfresco dining, or simply soaking up the sun. Allocated parking adds to the convenience, while the wider community offers so much more. Enjoy exclusive access to thoughtfully landscaped communal gardens, a safe and exciting children's play park, and a fully equipped outdoor gym—perfect for staying fit without ever leaving the neighborhood. With exceptional design, superior specification, and a vibrant community setting, this home is more than a place to live—it's a place to thrive.

## Ground Floor

### Kitchen / Dining Area

11' 2" x 9' 8" ( 3.40m x 2.95m )

High quality Scandinavian Velfac double glazed composite to the rear aspect. Double glazed door to access the enclosed rear garden. Beautifully presented fully fitted kitchen built with a range of base and wall mounted units comprising of cupboards and drawers. Ample storage. Fitted with modern appliances inclusive of Induction Hob and Integrated Fridge/Freezer unit. , Washing Machine, Dishwasher, Cooker-hood located above the hob. Tiling to all water sensitive areas.

### Living Space - Open Plan

11' 2" x 10' 7" ( 3.40m x 3.23m )

### Bedroom Three

13' 8" x 12' ( 4.17m x 3.66m )

High quality Scandinavian Velfac double glazed composite window to the front aspect

### Shower Room

7' 3" x 7' 3" ( 2.21m x 2.21m )

Three piece suite comprising of walk in shower, Low Level W/C and wash hand basin. Tiling to all water sensitive areas.

## First Floor Accommodation

### Bedroom One

14' 1" x 11' 1" ( 4.29m x 3.38m )

High quality Scandinavian Velfac double glazed composite window to the front aspect

### Bedroom Two

9' 7" x 8' 11" ( 2.92m x 2.72m )

High quality Scandinavian Velfac Velux style double glazed composite window to the rear aspect

### Bathroom

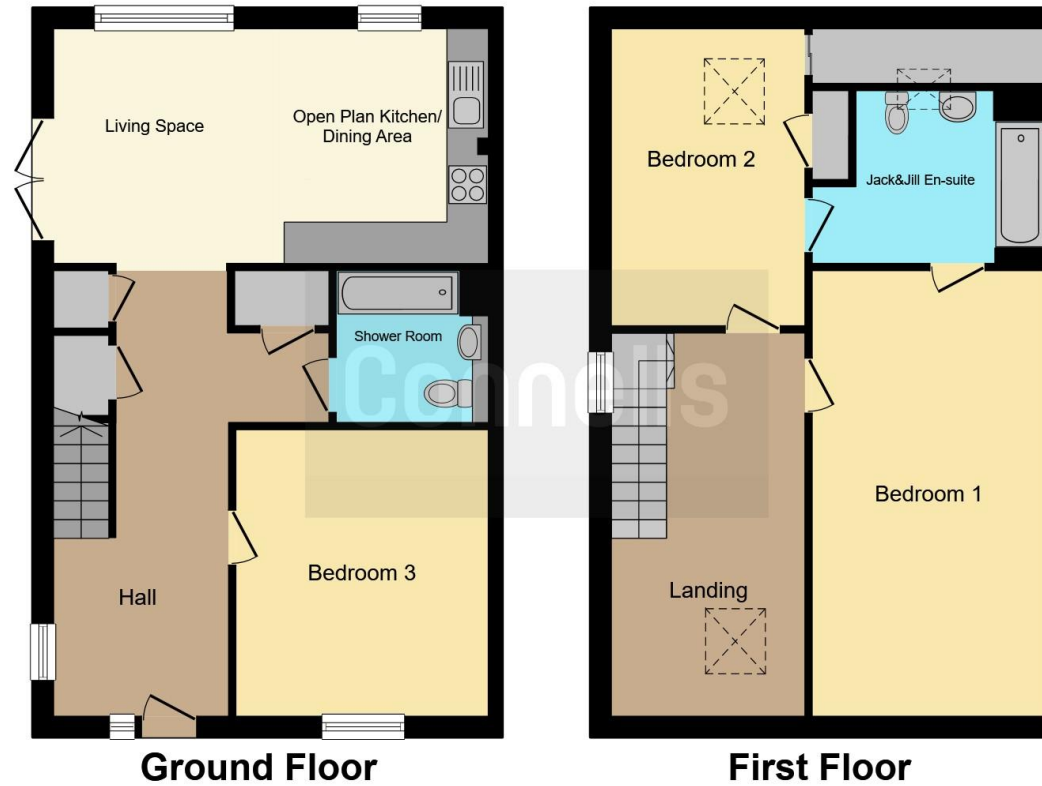
9' x 8' 6" ( 2.74m x 2.59m )

Three piece suite comprising of bath with mixer taps, Low Level W/C and wash hand basin. Tiling to all water sensitive areas.









This floor plan is for illustrative purposes only. It is not drawn to scale. Any measurements, floor areas (including any total floor area), openings and orientation are approximate. No details are guaranteed, they cannot be relied upon for any purpose and they do not form part of any agreement. No liability is taken for any error, omission or misstatement. A party must rely upon its own inspection(s). Powered by [www.focalagent.com](http://www.focalagent.com)

To view this property please contact Connells on

**T 01793 461757**  
**E [swindonoldtown@connells.co.uk](mailto:swindonoldtown@connells.co.uk)**

3-5 Victoria House, Albert St  
 SWINDON SN1 3BG

EPC Rating:  
 Exempt

Tenure: Freehold

**view this property online [connells.co.uk/Property/SND103257](http://connells.co.uk/Property/SND103257)**



1. MONEY LAUNDERING REGULATIONS Intending purchasers will be asked to produce identification documentation at a later stage and we would ask for your co-operation in order that there will be no delay in agreeing the sale. 2. These particulars do not constitute part or all of an offer or contract. 3. The measurements indicated are supplied for guidance only and as such must be considered incorrect. Potential buyers are advised to recheck measurements before committing to any expense. 4. We have not tested any apparatus, equipment, fixtures, fittings or services and it is in the buyers interest to check the working condition of any appliances.

Connells Residential is registered in England and Wales under company number 1489613, Registered Office is Cumbria House, 16-20 Hockliffe Street, Leighton Buzzard, Bedfordshire, LU7 1GN. VAT Registration Number is 500 2481 05.

**See all our properties at [whhttp://www.connells.co.uk](http://www.connells.co.uk) | [www.rightmove.co.uk](http://www.rightmove.co.uk) | [www.zoopla.co.uk](http://www.zoopla.co.uk)**

Property Ref: SND103257 - 0003