

**\* This stunning and deceptively spacious four bedroom home has been extensively improved and renovated by the current owners. The contemporary living accommodation features an impressive open plan kitchen/dining room with bi-folding doors, four bedrooms, modern bathrooms and double garage \***

**The Accommodation Comprises:**

**Entrance Hall**

Spacious entrance hall, stairs to First Floor, radiator.

**Lounge 12' 0" x 11' 0" (3.65m x 3.35m)**

Main Wi-Fi router location with Ethernet and fibre optic connections, UPVC double glazed window to front elevation, fitted blind, radiator, smoke detector.

**Kitchen/Dining Room 18' 8" x 17' 9" (5.69m x 5.41m)**

An impressive room with bi-folding doors to the garden, UPVC double glazed windows to side elevation, fitted with a range of base cupboards and eye level units, central island and Quartz worktop, inset sink with mixer tap, integrated ovens and microwave, induction hob on island, space and plumbing for dishwasher, washing machine and tumble dryer, space for American-style fridge/freezer, inset spotlights and feature pendant lights.

**Study 15' 1" x 4' 11" (4.59m x 1.50m)**

Versatile room currently being used as an office, with fitted cupboards/wardrobes (one with electric ventilation), hardwired Ethernet connection, UPVC double glazed window with fitted blinds to front elevation, cupboard housing boiler (installed December 2025), utility meters and fuse box.

**Wet Room**

Tiled wet room with walk-in shower, toilet, basin with storage, wall-mounted radiator.

**First Floor Landing**

Staircase with ceiling hanging lights and staircase spotlights, loft access via folding hatch with integrated ladder, UPVC double glazed window to side elevation.

**Bedroom One 18' 9" x 9' 9" (5.71m x 2.97m) max**

UPVC double glazed window to rear elevation, built-in wardrobe, radiator, door to:

**En-Suite**

Double shower, close coupled WC, wash hand basin set in vanity unit, inset spotlights, extractor fan, ladder-style radiator.

**Bedroom Two 15' 6" x 7' 6" (4.72m x 2.28m)**

UPVC double glazed window to rear elevation, built-in wardrobe.

**Bedroom Three 12' 0" x 10' 11" (3.65m x 3.32m) max**

UPVC double glazed window to front elevation, radiator.

**Bedroom Four 5' 11" x 8' 2" (1.80m x 2.49m)**

UPVC double glazed window to side elevation, radiator.

**Main Bathroom**

UPVC double glazed obscured window to front elevation, freestanding bath, close coupled WC, wash hand basin set in vanity unit, extractor fan, ladder-style radiator.

**Shower Room**

UPVC double glazed window to side elevation, tiled shower enclosure, close coupled WC, extractor fan, ladder-style radiator.

**Loft Space**

Fully boarded and insulated loft, with lighting and smoke alarm, providing substantial storage space and potential for future development (subject to planning permission).

**Outside**

Resin-finished driveway providing off-road parking, metal gate separating driveway from side access which in turn leads to the main entrance of the house, CCTV to driveway and side passageway, EV charger installed 2025. Generous size rear garden with block paving patio and path leading to double garage, double socket currently supplying power to the pond, outside tap.

**Double Garage**

Double-glazed windows and side door, two vehicular doors (one remote controlled), power and light connected.

**General Information**

Construction: Traditional

Water Supply: Portsmouth Water

Sewerage: Mains

Electric Supply: Mains

Gas Supply: Mains

Mobile & Broadband coverage: <https://checker.ofcom.org.uk>

Flood risk: [www.gov.uk/check-long-term-flood-risk](http://www.gov.uk/check-long-term-flood-risk)

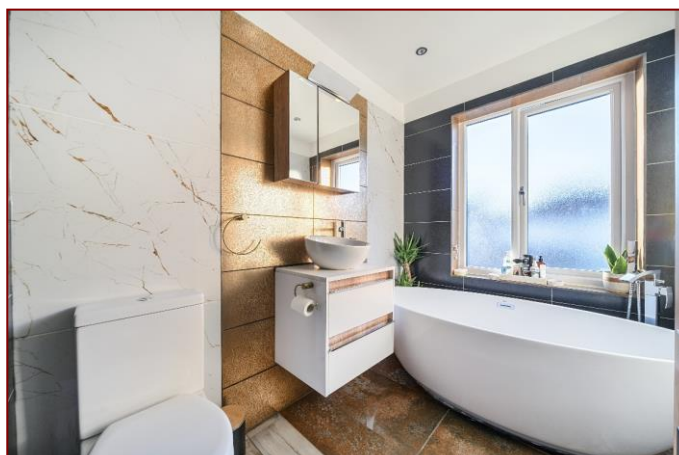
Tenure: Freehold

Council Tax Band: C

**Vendor Information**

The Vendors advised at the time of instruction of the following upgrades to the property:

- Cavity wall insulation
- All radiators throughout the property have been replaced
- All downstairs flooring was upgraded in 2025 to high-durability commercial-standard panel flooring
- UPVC double glazing fitted with anti-forced entry security fixtures.





**Disclaimer:** These particulars are set out as a general outline in accordance with the Consumer Protection from Unfair Trading Regulations 2008 (CPR's) and Business Protection from Misleading Marketing Regulations 2008 (BPR's) only for the guidance of intending purchasers or lessees, and do not constitute any part of an offer or contract. Details are given without any responsibility, and any intending purchasers, lessees or third parties should not rely on them as statements or representations of fact, but must satisfy themselves by inspection or otherwise as to the correctness of each of them.

We have not carried out a structural survey and the services, appliances and specific fittings have not been tested. All photographs, measurements, floor plans and distances referred to are given as a guide only and should not be relied upon for the purchase of carpets or any other fixtures or fittings. Gardens, roof terraces, balconies and communal gardens as well as tenure and lease details cannot have their accuracy guaranteed for intending purchasers. Lease details, service ground rent (where applicable) are given as a guide only and should be checked and confirmed by your solicitor prior to exchange of contracts.

No person in the employment of Fenwicks Estates Ltd has any authority to make any representation or warranty whatever in relation to this property. Purchase prices, rents or other prices quoted are correct at the date of publication and, unless otherwise stated, exclusive of VAT.

**Data Protection:** We retain the copyright in all advertising material used to market this Property.

**Money Laundering Regulations 2017:** Intending purchasers will be required to produce identification documentation once an offer is accepted.



£430,000

Grove Road, Gosport, PO12 4JH

\*DRAFT DETAILS\*

**Fenwicks**

THE INDEPENDENT ESTATE AGENT

Fenwicks - Gosport Office: 02392 529889 [www.fenwicks-estates.co.uk](http://www.fenwicks-estates.co.uk)