

House - Semi-Detached (EPC Rating: C)

96 SHERBOURNE ROAD, BLACKPOOL,
LANCASHIRE, FY1 2PG

PCM

£850 PCM



3 Bedroom House - Semi-Detached located in Lancashire

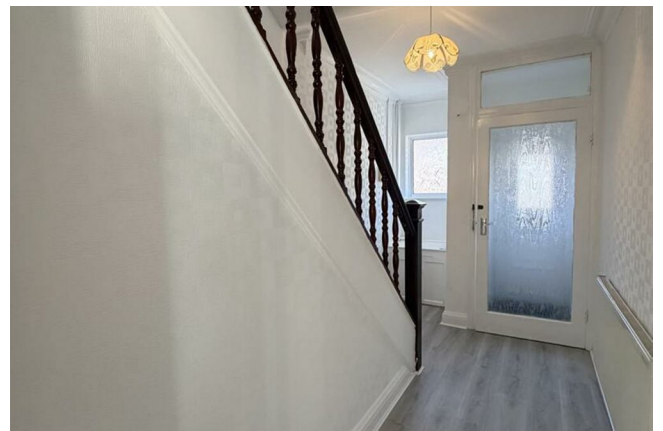
Welcome to Sherbourne Road....

Occupying a convenient position within easy reach of Blackpool town centre and the promenade, this tidy semi-detached house boasts spacious, neat and tidy accommodation ideal for a little family or those working tenants looking to share tidy accommodation. Warmed by gas fired central heating and complemented by UPVC double glazing, features include entrance vestibule, entrance hall, spacious living room, open plan modern, dining kitchen with a generous selection of base and eye level white units, landing, three bedrooms and a shower room. Outside at the front is a private paved garden and to the rear is an east facing courtyard garden.

This beautiful, unfurnished home is available to let immediately to those tenants that have a working, homeowner guarantor to support your application. Those tenants with pets may be considered for tenancy.

For further information or to arrange a viewing, please contact Letting Solutions on 01253 886444.

Rent: £850.00 per calendar month Bond: £980.00 Holding Deposit: £190.00

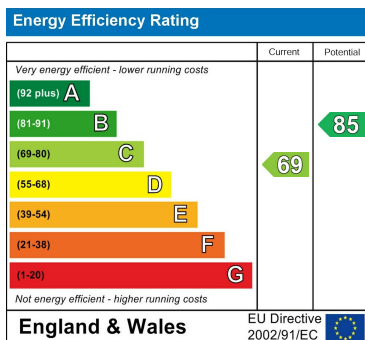


LETTING SOLUTIONS BLACKPOOL LTD | 52 WHITEGATE DRIVE, BLACKPOOL, LANCASHIRE, FY3 9DQ

Council Tax Band

B

Energy Performance Graph



Call us on

01253 886444

hello@lsblackpool.com

lsblackpool.com

Agents Note: Whilst every care has been taken to prepare these particulars, they are for guidance purposes only. All measurements are approximate and are for general guidance purposes only and whilst every care has been taken to ensure their accuracy, they should not be relied upon and potential buyers are advised to recheck the measurements.