



SCOTT WINDLE POWERED BY **exp** TM UK

@ scott.windle@exp.uk.com

scottwindle.exp.uk.com

📞 07838 311 550

Sheppard Close, Pewsham, Chippenham

Offers Over £400,000

4 1 3



A very well presented four bedroom detached family home, pleasantly situated in a popular cul-de-sac on the highly sought after Pewsham development.

Ideally located within easy reach of local schools, nursery facilities, and everyday amenities including a Tesco Express and doctor's surgery, the property also enjoys convenient access to a variety of scenic countryside walks.

The well proportioned accommodation is arranged over two floors. The ground floor comprises a entrance hall with stairs rising to the first floor, a spacious sitting room, an open plan kitchen and dining room, a large conservatory, a utility area, and a downstairs cloakroom.

On the first floor, there are four generously sized bedrooms, with built in wardrobes in both the master and second bedrooms, together with a modern family shower room.

Externally, the property benefits from a delightful rear garden, laid mainly to lawn with a patio terrace and an attractive selection of mature trees and shrubs, providing a pleasant outdoor space for relaxation and entertaining.

To the front, a driveway provides off street parking. The garage has been partially converted to create the utility area, while retaining a useful storage space to the front.

This property would make a lovely family home and an internal viewing is highly recommended.

Property Information

Freehold

Council Tax Band; D

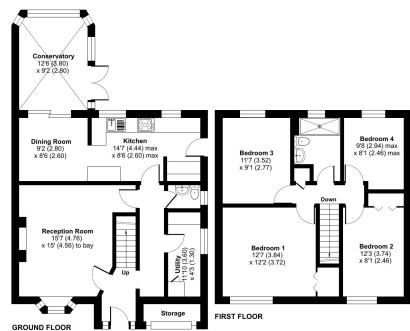
Gas Fired Central Heating

EPC Rating; C



Sheppard Close, Chippenham, SN15

Approximate Area = 1305 sq ft / 121.2 sq m
Outbuilding = 18 sq ft / 1.6 sq m
Total = 1323 sq ft / 122.8 sq m
For identification only - Not to scale



These plans produced in accordance with RICS Property Measurement Standards (RICS 2018) and are for identification only. Not to scale. Produced by eXp Agent (57) 822 107688

- Please Quote Reference SW0341
- Very Well Presented
- Four Bedrooms
- Shower Room, Downstairs Cloakroom & Utility Area
- Driveway Parking & Useful Storage Space (Former Garage)
- Popular Pewsham Development; Cul De Sac Location
- Detached Family Home
- Kitchen / Dining Room, Sitting Room & Conservatory
- Mature Rear Garden With Patio Terrace
- Viewing Highly Recommended

