



Richmond Road

Kingston Upon Thames, KT2

£1,800 per month
(£415.38 per week)

CHESTERTONS



Richmond Road

Kingston Upon Thames, KT2

-



Minimum Term:	12 months
Deposit Required:	5 weeks
Local Authority:	Kingston upon Thames London Borough Council
Council Tax Band:	C
EPC Rating:	D
Unfurnished	

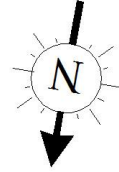
Chestertons Richmond Lettings

23a Friars Stile Road
Richmond
Surrey
TW10 6NH
richmondlettingsusers@chestertons.co.uk
02037583333
chestertons.co.uk

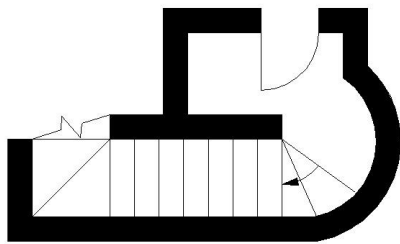
Richmond Road, KT2

Approximate gross internal area

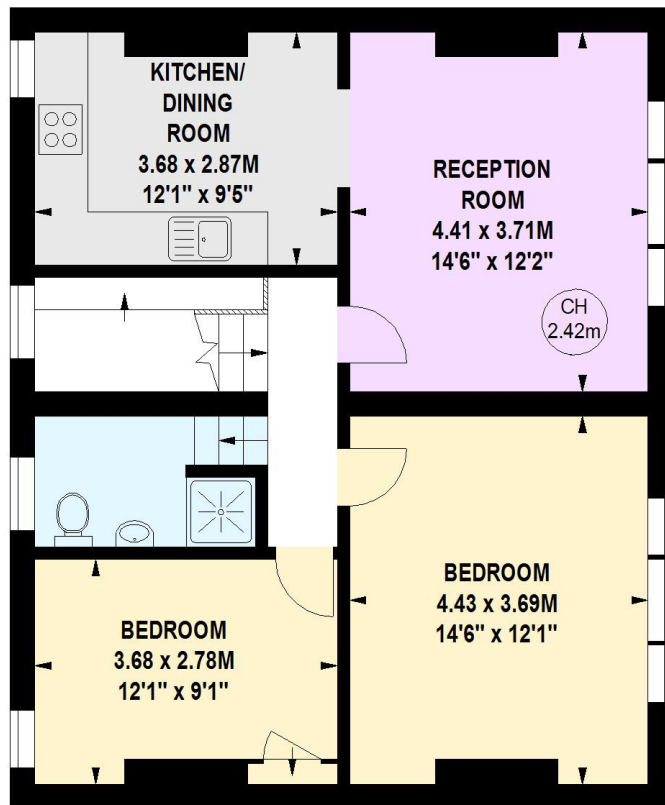
75.90 sq m / 817 sq ft



Key :
CH - Ceiling Height



74 sq ft
**First Floor
Entrance**



743 sq ft
Second Floor

This floor plan is a representation for guidance purposes only, not for valuation.
Any figure is approximate and must not be relied on as a statement of fact.
Copyright of Wyatt Dixon Homes

**WYATT DIXON
HOMES**

