

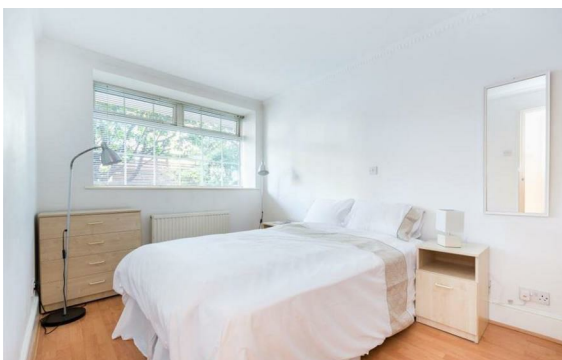


Rosemoor Street, Chelsea, London, SW3

Rent £690 Per Month

2 Bed | 1 Bath | 1 Reception

Please call us on 020 7724 2233 or email us info@newingtonstates.com to book a viewing.



A bright and well-presented ground floor apartment offering two generously sized bedrooms, a modern bathroom, and access to a charming communal garden. The property features a spacious reception room alongside a separate, fully fitted kitchen, creating a comfortable and well-defined living space ideal for both relaxing and entertaining.

The communal garden provides a peaceful outdoor retreat, perfect for enjoying warmer days. Ideally located on Rosemoor Street, the apartment is moments from the heart of Chelsea, with King's Road offering an array of boutiques, cafés, and restaurants, while South Kensington's museums and Harrods are all within easy reach.

Energy Efficiency Rating: C

Agents Note: Whilst every care has been taken to prepare these particulars, they are for guidance purposes only. All measurements are approximate and are for general guidance purposes only and whilst every care has been taken to ensure their accuracy, they should not be relied upon and potential buyers/tenants are advised to recheck the measurements.

NEWINGTON
— ESTATES —

60 Upper Montagu Street

London

W1H 1SN

020 7724 2233

info@newingtonstates.com

<http://www.newingtonstates.com>