



## Bridge Way, TW2

£1,250,000

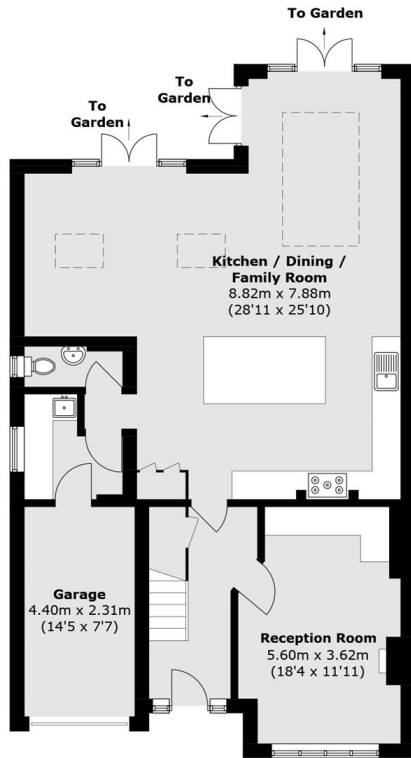
This beautifully presented and spacious five bedroom family home is ideally situated close to the High Street. The house has been extended throughout and offers a well-styled, open-plan kitchen and living space, separate front reception room, a large garden and off-street parking.

Bridge Way is a highly sought after road beside the town centre where you will find a selection of shops, cafés and restaurants. Whitton mainline station has a fast link to London Waterloo which is just a few hundred yards away and there are also a number of good schools nearby.

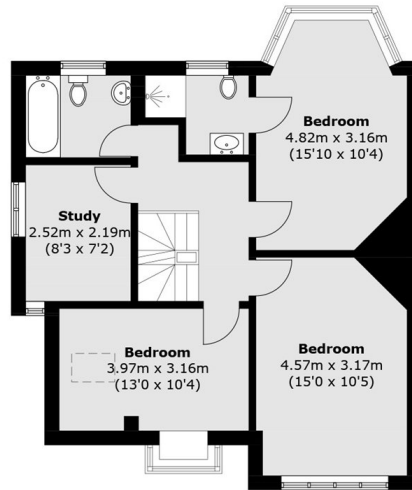
### Features

- Five Bedrooms
- Three Bathrooms
- Fantastic Condition
- Ideally Located
- South West Facing Garden
- Off Street Parking

# Bridge Way, Twickenham, TW2



Ground Floor



First Floor



Second Floor

Total area (approx.): 198.3 sq. m (2,134.4 sq. ft)  
(Excluding Eaves)