



Great Green

Cockfield, Cockfield, Bury St. Edmunds, IP30 0HJ

Isaac Estates are delighted to bring to the market this three bedroom detached house set on Great Green in the pleasant village of Cockfield.

The property is set over two floors and in brief offers entrance hallway, sitting room with patio door to rear garden, cloakroom modern kitchen / dining room with integrated single electric oven and hob, integrated dishwasher, fridge freezer, washing machine and water softener included.

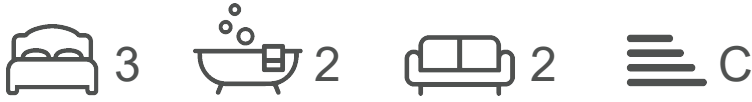
The first floors offers master bedroom with dressing area and en-suite shower room, a further two double bedrooms and family bathroom.

Externally the property offers a front and rear garden and two allocated parking spaces.

£1,450 Per month

Great Green

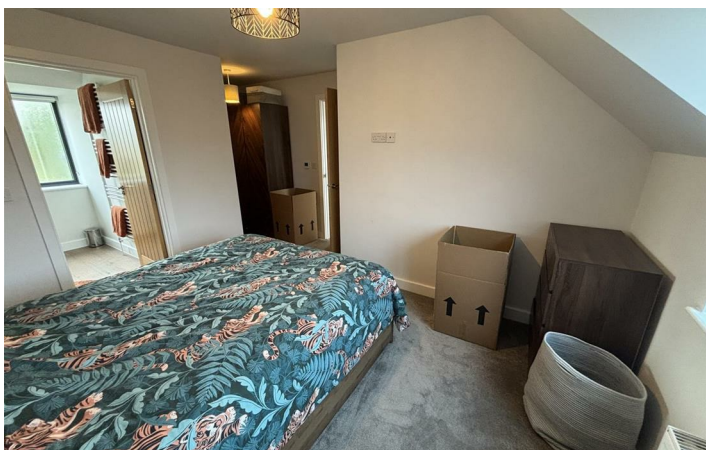
Cockfield, Cockfield, Bury St. Edmunds, IP30 0HJ



- MODERN DETACHED HOUSE SITUATED IN THE PLEASANT VILLAGE OF COCKFIELD
- ENTRANCE HALLWAY WITH FITTED STORAGE, CLOAKROOM
- KITCHEN / DINING ROOM WITH INTEGRATED APPLIANCES AND WATER SOFTENER
- SITTING ROOM WITH PATIO DOOR TO REAR GARDEN
- MASTER BEDROOM WITH DRESSING AREA AND EN-SUITE SHOWER ROOM
- TWO FURTHER DOUBLE BEDROOMS AND FAMILY BATHROOM
- ENCLOSED REAR GARDEN AND FRONT GARDEN
- TWO ALLOCATED PARKING SPACES, EPC 76C
- UNDERFLOOR HEATING TO GROUND FLOOR AND AIR SOURCE HEAT PUMP
- COUNCIL TAX BAND D, VIEWING HIGHLY RECOMMENDED



[Directions](#)





Floor Plan

These particulars, whilst believed to be accurate are set out as a general outline only for guidance and do not constitute any part of an offer or contract. Intending purchasers should not rely on them as statements of representation of fact, but must satisfy themselves by inspection or otherwise as to their accuracy. No person in this firm's employment has the authority to make or give any representation or warranty in respect of the property.

12 Langton Place, Hatter Street, Bury St Edmunds, Suffolk, IP33 1NE
Tel: 01284 620011 Email: ryan@isaacestates.co.uk www.isaacestates.co.uk

