



Deptford High Street, SE8

£450,000

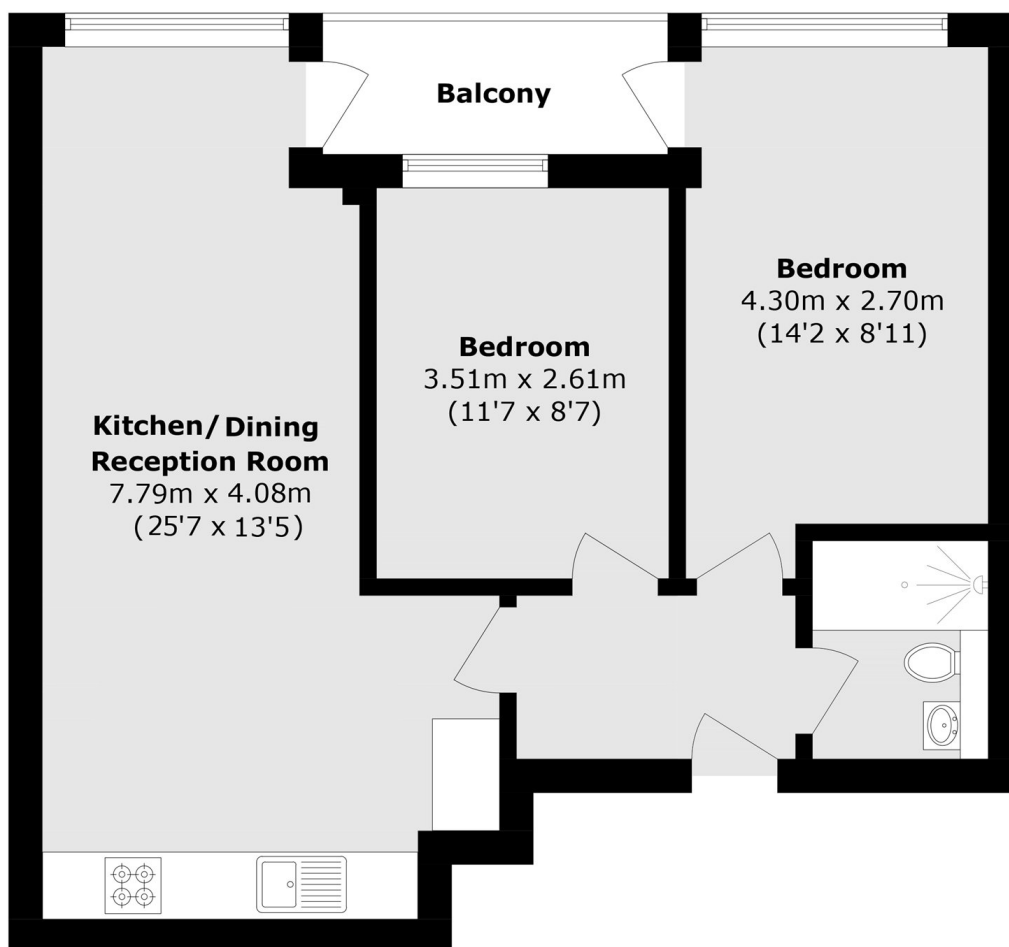
Stylish 2-bedroom flat on Deptford High Street with a bright open-plan living/kitchen area, modern appliances, two spacious double bedrooms, a sleek shower room, and a private balcony.

The area is rich in local amenities, with Deptford High Street just moments away, offering a vibrant mix of independent cafés, restaurants, supermarkets, and everyday essentials. Residents can also enjoy nearby green spaces such as Deptford Park and the scenic riverside around Greenwich is perfect for leisure and weekend relaxation.

Features

- Two Double Bedrooms
- Open Plan Living
- Balcony
- Second Floor
- Close To Transport Links
- Modern Shower Room

Deptford High Street, London, SE8



Total area (approx.): 54.3 sq. m (584.5 sq. ft)

Balcony (approx.): 3.8 sq. m (40.9 sq. ft)