

## Manuka Close, W7

£3,500 Per calendar month

A truly unique and contemporary four bedroom detached house. Offering four double bedrooms and a large bright lounge with modern open plan kitchen leading out to a decked garden.

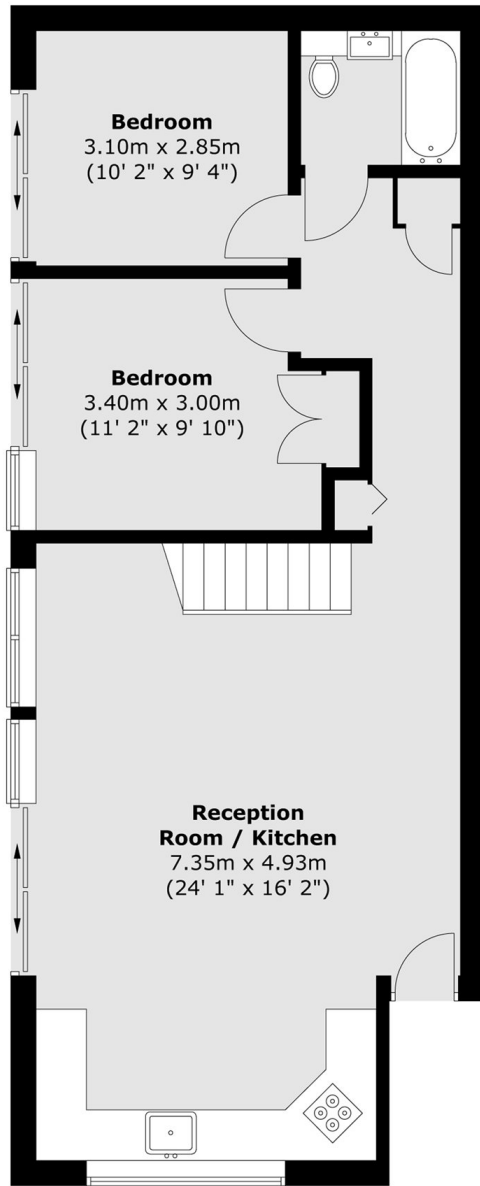
Located in a quiet cul-de-sac less than a mile from West Ealing station. Manuka Close is moments away from the Uxbridge Road which offers excellent bus links to both Ealing Broadway and Northfields Station.

### Features

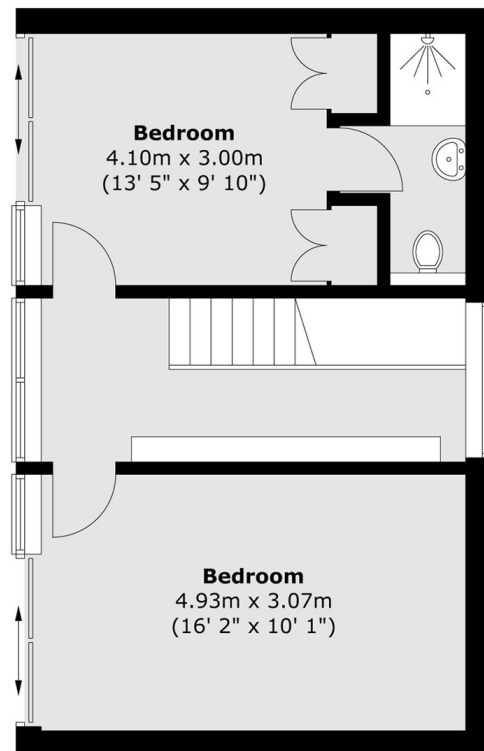
- Four Double Bedrooms
- Ultra Modern Style
- Parking Space
- Private Patio Garden
- Gas Central Heating
- Furnished

# Manuka Close, London, W7

## Ground Floor



## First Floor



Total area (approx.) : 109.8 sq. m (1182 sq. ft)