



10 Veronica Drive, Carlton – NG4 3QS

Guide Price £260,000 – £280,000



10 Veronica Drive

Carlton, Nottingham

GUIDE PRICE £260,000–£280,000 NO CHAIN!
Extended and well-presented 3-bed chalet-style detached home! Versatile layout with 2 receptions, dining kitchen, modern bathroom and southerly-garden!

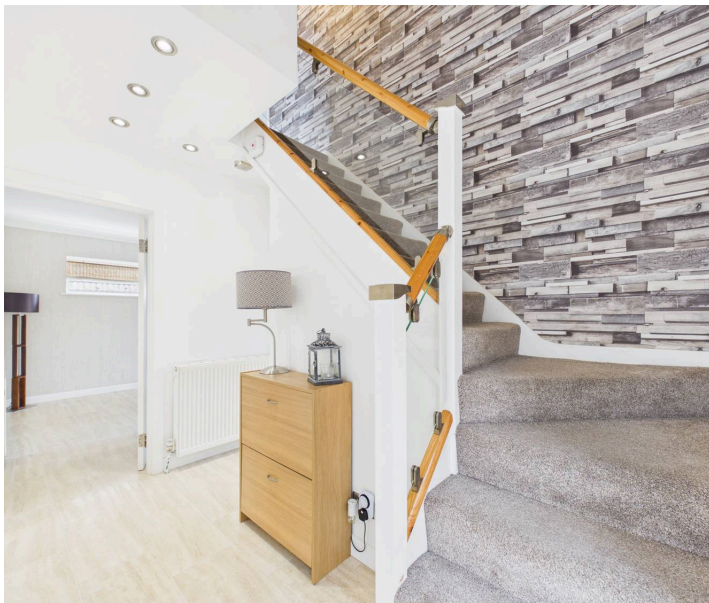
Council Tax band: C

Tenure: Freehold

EPC Energy Efficiency Rating: D

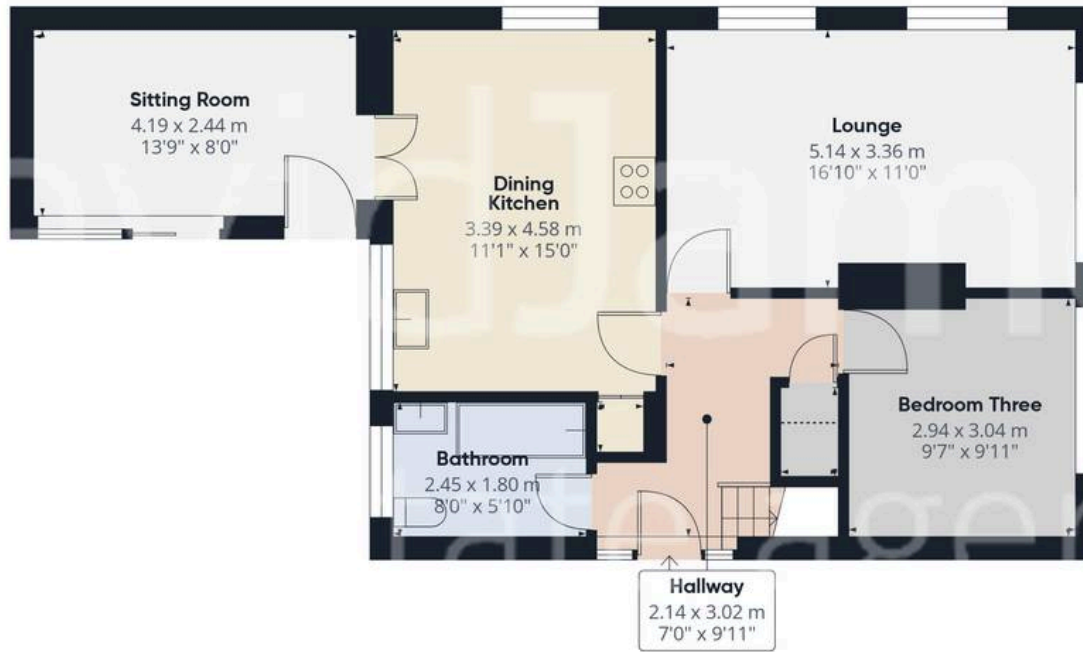
EPC Environmental Impact Rating: E

- Well-presented and extended chalet-style detached home with no chain
- Ideally positioned for easy access to Carlton's nearby amenities and transport links
- Welcoming entrance hall with useful understairs storage
- Bright and spacious lounge with a feature electric fire and surround
- Dining kitchen with a range of fitted units and integrated appliances
- Versatile second sitting/dining room with patio doors to the garden
- Ground floor modern bathroom with an over-bath rainfall shower
- Three versatile bedrooms (one ground floor and two first floor)
- South-easterly facing rear garden with lawn, paved seating area and a decked patio plus storage outbuilding
- Driveway provides convenient off-street parking









Floor 0



Floor 1



Approximate total area⁽¹⁾

105.3 m²

1133 ft²

Reduced headroom

12 m²

130 ft²

(1) Excluding balconies and terraces

Reduced headroom

----- Below 1.5 m/5 ft

Calculations reference the RICS IPMS 3C standard. Measurements are approximate and not to scale. This floor plan is intended for illustration only.

GIRAFFE360



David James Estate Agents

376 Carlton Hill, Carlton - NG4 1JA

0115 987 8957 • carlton@david-james.com • www.david-james.com

These particulars are produced in good faith and are set out as a general guide only. Measurements are approximate and floor plans are for illustrative purposes only. Services have not been tested. We have established professional relationships with third-party suppliers for the provision of services to Clients, details of which can be found on the property listing page on our website.