



15 Snapdragon Way, Beckwithshaw
Harrogate

Guide Price **£725,000**



MYRINGS



15 Snapdragon Way

Beckwithshaw, Harrogate

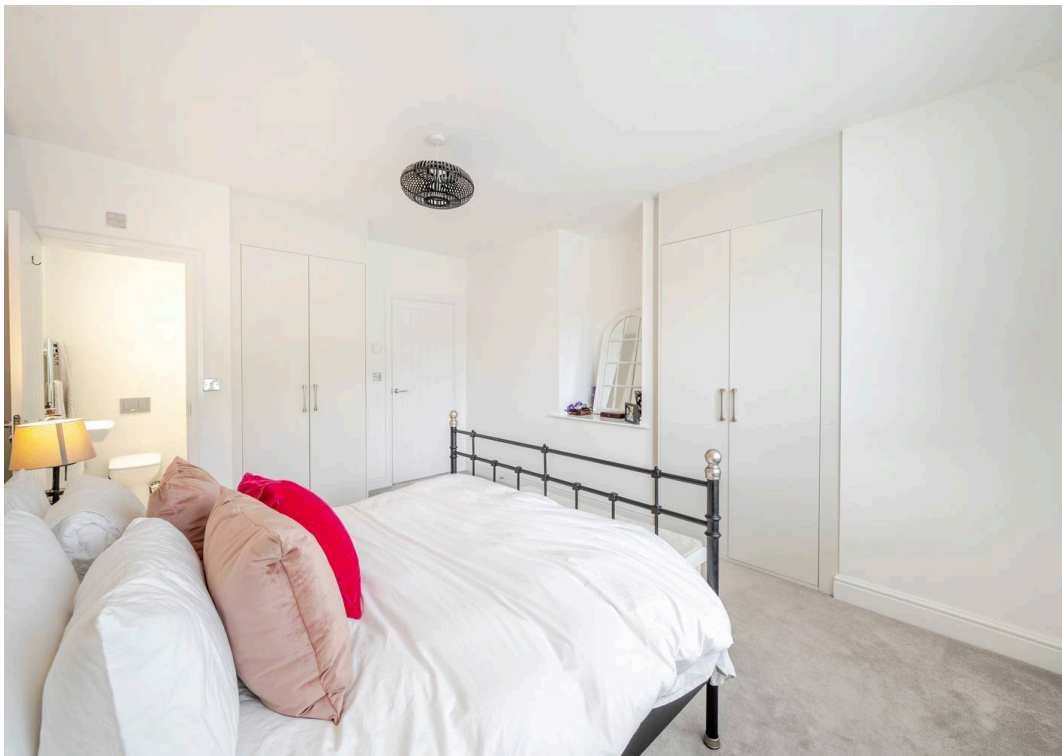
Nestled in the corner of a highly sought-after modern development built in 2021 just a stone's throw from Harlow Carr Gardens, this beautifully presented four bedroom detached home benefits from 5 years left on its new homes warranty and has had a recently landscaped rear garden backing on to the peaceful Pine Woods. Council Tax band: F

Tenure: Freehold

- MODERN FOUR BEDROOM DETACHED HOME (BUILT 2021)
- EXCLUSIVE DEVELOPMENT NEAR HARLOW CARR & PINE WOODS
- STUNNING OPEN PLAN DINING KITCHEN WITH BI-FOLDS
- BEAUTIFULLY LANDSCAPED, PRIVATE REAR GARDEN
- TWO EN-SUITES, INTEGRAL GARAGE & DRIVEWAY PARKING



MYRINGS



Snapdragon Way, Beckwithshaw, Harrogate, HG3



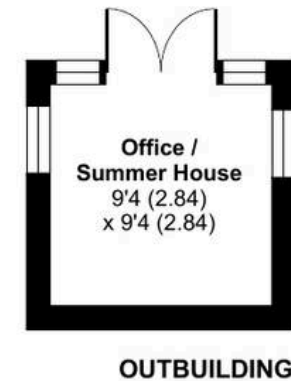
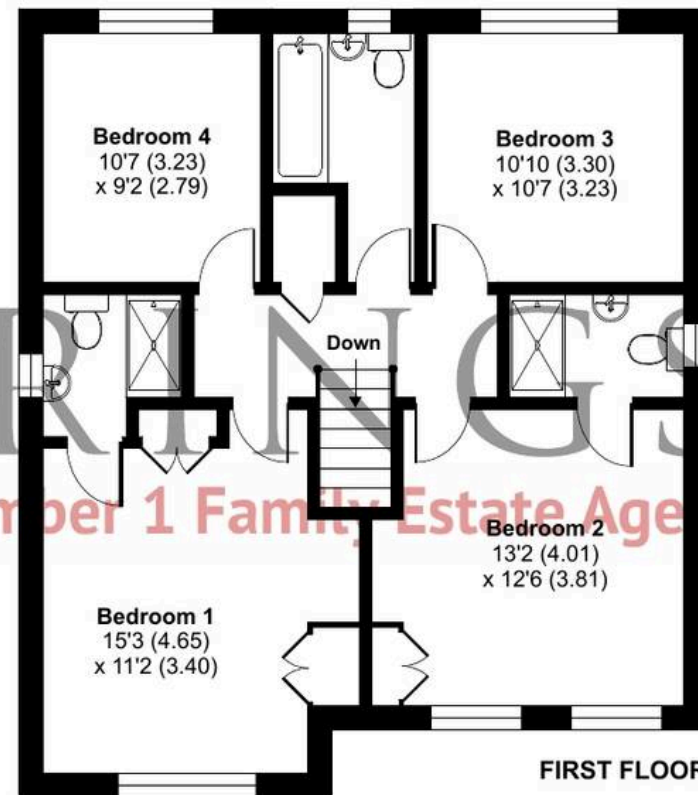
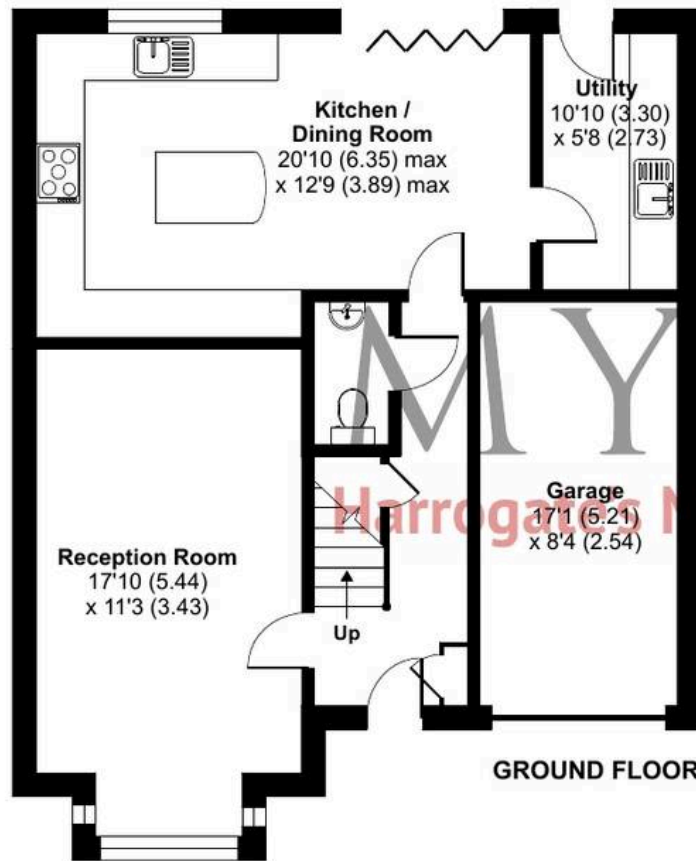
Approximate Area = 1456 sq ft / 135.3 sq m

Garage = 142 sq ft / 13.2 sq m

Outbuilding = 87 sq ft / 8 sq m

Total = 1685 sq ft / 156.5 sq m

For identification only - Not to scale







Myrings Estate Agents

Myrings Estate Agents Ltd, 10 Princes Square - HG1 1LX

01423

566400

▪ enquiries@myringsestateagents.com ▪ <http://myringsestateagents.com/>

