

A charming Chelsea townhouse



Caversham Street

C H E L S E A S W 3







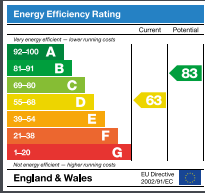
A delightful and enchanting terraced Chelsea house which has been exceptionally well-renovated and decorated by the current vendor to a very high standard.



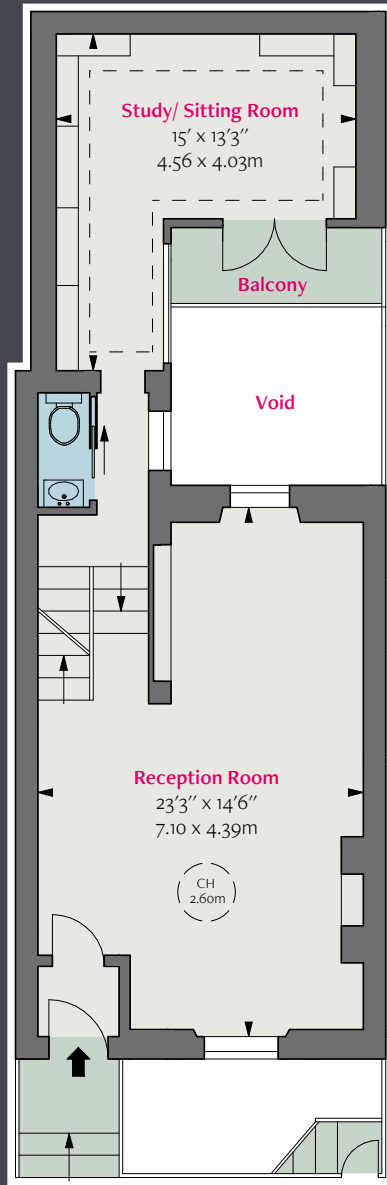


Available for sale, this house offer The house benefits from **air-conditioning** in all rooms (except the kitchen), double-glazing, underfloor heating to the bathrooms and kitchen and a charming secluded roof terrace, which is accessed via an electronic glass roof door.





Lower Ground Floor



Raised Ground Floor

Approximate Gross Internal Area
1,608 sq ft / 149.38 sq m

■ Hatched Area: Under 1.5m
 CH: Ceiling height

Floorplan for guidance only, not to scale or for valuations purposes. It must not be relied upon as a statement of fact. All measurements and areas are approximate and have been prepared in accordance with the current edition of the RICS Code of Measuring Practice.

© Alex Winship Photography Ltd.

Guide Price
£3,250,000

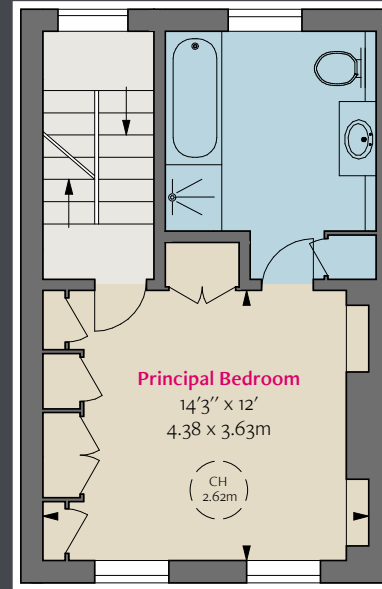
Tenure Freehold

Contents
Available furnished

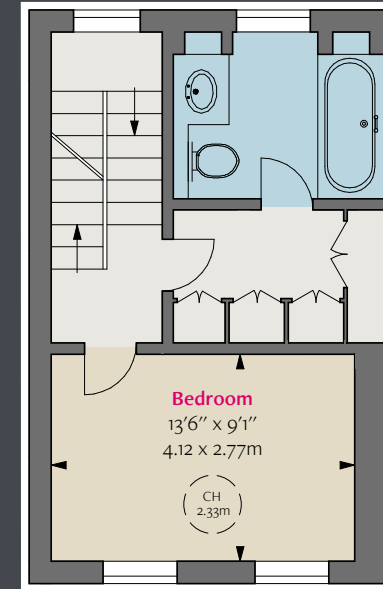
Local Authority
Kensington & Chelsea

Council Tax
Band G

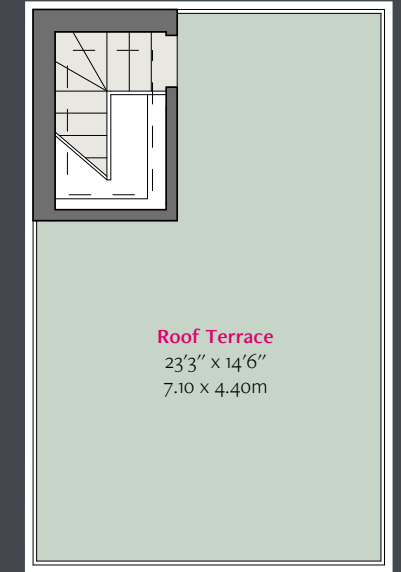
EPC Rating D



First Floor



Second Floor



Third Floor

Misrepresentation Act 1967. This brochure and the descriptions and measurements herein do not constitute representation and whilst every effort has been made to ensure accuracy, this cannot be guaranteed.

17/06/26 HEWLETT-250308B-04-JF

LOUISE HEWLETT

PROPERTY CONSULTANTS

07768 818 802

louise@louisehewlett.co.uk

SOLE SELLING AGENTS