

# Rolfe East



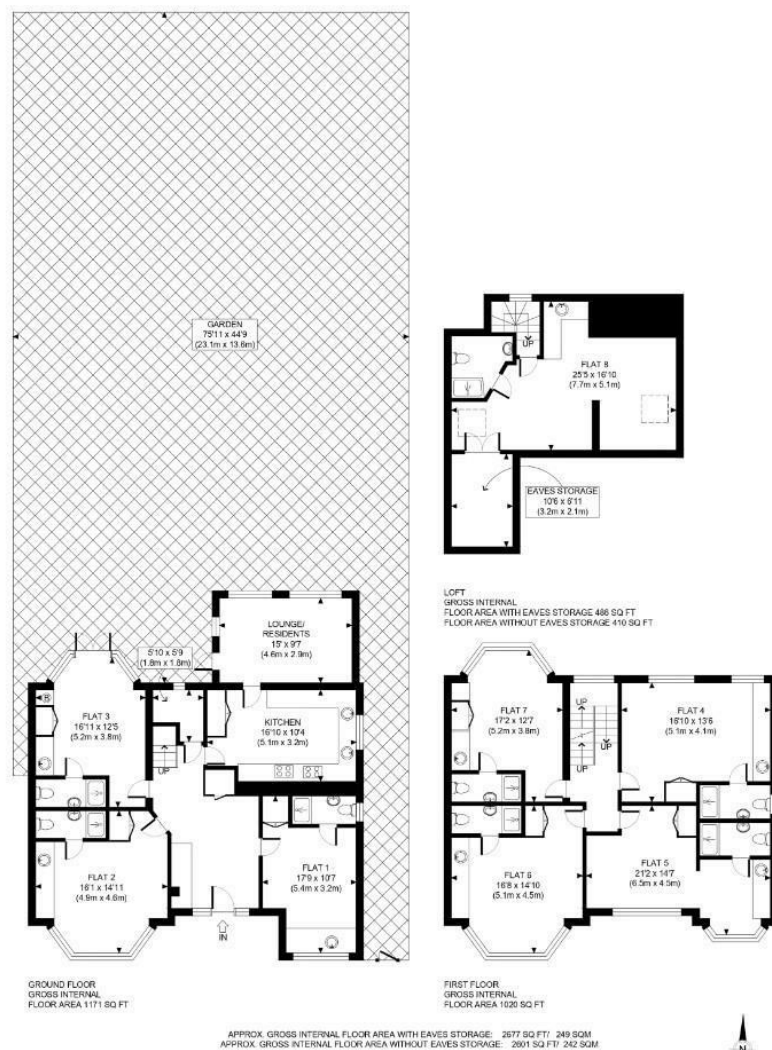
## Corringway, W5

£1,950 Per Month

- Contemporary studio apartments
- Gas central heating and double glazed windows
- Parquet wood flooring throughout
- Utility room/washing machine/tumble dryer
- Exclusive modern development
- Residents lounge
- Access to large private gardens
- All bills included
- En-suite shower rooms
- Parking available by negotiation

18-19 The Mall, Ealing, W5 2PJ  
020 8840 7707

[ealinglettings@rolfe-east.com](mailto:ealinglettings@rolfe-east.com)  
<https://www.rolfe-east.com/>



**Rolfe East**

This plan is for illustrative purposes only and should be used as such by any prospective client. Whilst every attempt has been made to ensure the accuracy of the Floor Plan contained here, measurements of the doors, windows, rooms and any other items are approximate and no responsibility is taken for any errors, omissions, or misstatement. The services, systems and appliances shown have not been tested and no guarantee as to the operability or efficiency can be given.

**PROPERTY PHOTO PLANS**  
FOR THE TOP 10 PROPERTY AGENTS

## Viewings

Viewings by arrangement only.  
Call 020 8840 7707 to make an appointment.

## EPC Rating:

D

### Energy Efficiency Rating

	Current	Potential
Very energy efficient - lower running costs		
(92 plus) <b>A</b>		
(81-91) <b>B</b>		
(69-80) <b>C</b>		<b>79</b>
(55-68) <b>D</b>	<b>56</b>	
(39-54) <b>E</b>		
(21-38) <b>F</b>		
(1-20) <b>G</b>		
Not energy efficient - higher running costs		
<b>England &amp; Wales</b>	EU Directive 2002/91/EC	